

UNC Eosinophilic Esophagitis Patient Registry

Thank you for considering participating in our registry of patients with eosinophilic esophagitis (EoE). The goals of this registry are to:

- Find patients at UNC who have EoE
- Collect clinical information and biologic samples
- Learn more about the diagnosis, causes, and treatment of EoE
- Provide opportunities for future involvement in research studies



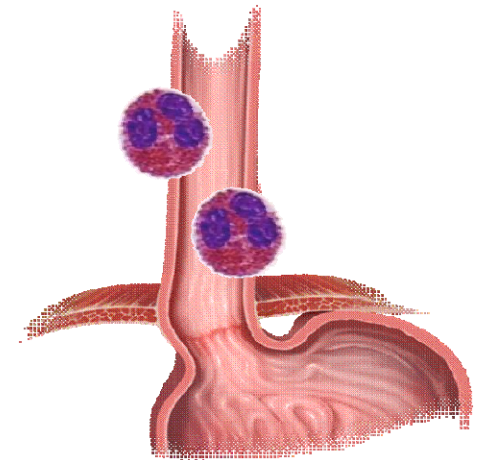
UNC EoE Patient Registry

CB # 7080
Bioinformatics Bldg, UNC-CH
Chapel Hill, NC 27599-7080
Phone: 919-966-4591
eeo@unc.edu



University of North Carolina Eosinophilic Esophagitis Patient Registry

Volunteer Information



UNC EoE Patient Registry



A view of the esophagus seen during an upper endoscopy which shows typical findings of eosinophilic esophagitis: rings, linear furrows, and white spots.

What is EoE?

Eosinophilic esophagitis (or EoE) is a newly recognized condition where certain white blood cells (the eosinophil) are in the lining of the esophagus, a place where they should not normally be.

The main symptoms from EoE are trouble swallowing or food getting stuck in the esophagus. However, other symptoms can include heartburn, chest pain, vomiting or regurgitation, and feeding troubles or growth difficulties in children.

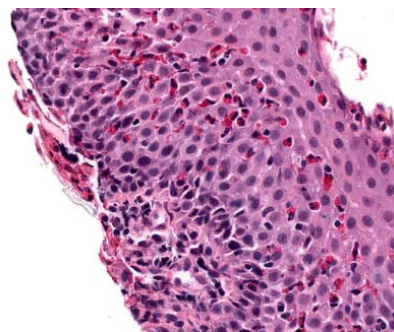
It is diagnosed with an upper endoscopy, where abnormalities in the esophagus can be seen (above), and with biopsy, where eosinophils are seen (right).

The Patient Registry

We have created the UNC EoE Patient Registry as a research study with the overall goals of learning more about the diagnosis, causes, and treatment of EoE.

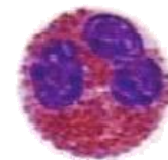
Specifically, for all patients at UNC with EoE, we hope to collect clinical information (like symptoms, medications, related health conditions) and obtain specimens (blood, esophageal biopsies, saliva) that can be used in the future to study EoE in detail.

We also plan to use the Registry to identify eligible candidates for future clinical trials.



A microscopic view of the lining of the esophagus in a patient with EoE which shows multiple eosinophils (the bright red dots) infiltrating the esophagus.

If you are interested in participating in this research study, please inform your health care provider during today's visit so they can arrange for you to meet with our research coordinator. If you are unable to meet today, please contact us by phone at 919-966-4591 or by email at eoel@unc.edu, and we will be in touch with you to provide further details.



The Research Team

A multidisciplinary team of researchers are involved with the UNC EoE Patient Registry. These include specialists in adult and pediatric gastroenterology and allergy/immunology, as well as collaborators in pathology and basic science labs.

The team is led by Dr. Evan Dellon, a gastroenterologist who specializes in EoE.