

Cell and Molecular Physiology

NEWSLETTER

Volume 1, Issue 7

September 2008

NOTES for EMPLOYEES

2009 Annual Benefit Enrollment Information

Between Sept. 29 and Nov. 3, 2008, you can enroll or change your existing benefit elections for 2009 in the NCFlex and University benefit programs.

You must re-enroll in the health care and dependent day care flexible spending accounts each year. Other benefits, including dental, vision, life insurance, cancer and accidental death and dismemberment insurance, do not require annual re-enrollment. NCFlex is also introducing a new critical illness plan during the 2009 annual enrollment.

You will receive a detailed UNC enrollment guide via campus mail, along with a copy of the NCFlex enrollment booklet. You can also find these resources, as well as other information, tools and links, at the [University Annual Enrollment Web site](#).

I.T. Update

Some shared equipment previously located on 5th floor MBRB has been moved. The large-format ink-jet printer (HP 9600) and the twin to the laser color printer in the mailroom (Dell 3100) are now on the 6th floor MBRB bridge area. **Residents of 6th floor MBRB can now print to that Dell 3100 and save a trip down to the mailroom.** This shift should also relieve the mailroom color printer of some of its print load.

The scanner no longer functions and we are shopping for a replacement. **Please let Jan McCormick know if you have any suggestions on a good make/model scanner for gels or high resolution color scanning.**

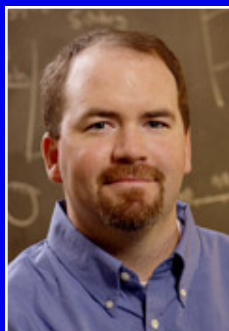
State Employees Combined Campaign (SECC)

I am pleased to announce the 2008 kick-off of a very exciting State Employees Combined Campaign. Pledge forms and resource guides have been distributed in your mailboxes for your convenience. Please drop all completed forms in Jeanette Florence's mail box, (located in the Administrative Office in Suite 5200) and please make sure you keep the last copy of the pledge form for your records. Your pledge can be made by cash, check, credit card, or payroll deduction. For all employees that wish not to contribute or are unable to contribute, please shred your pledge form because it contains your PID #. I am available by email (lynn_florence@med.unc.edu) for all SECC questions.

Thanks in advance,

Jeanette Florence
SECC Team Captain

Graduate of the department, Peter Mohler, PhD, is October 6th seminar speaker



Peter Mohler

Dr. Peter Mohler graduated from the Department of Cell & Molecular Physiology in 2000. He conducted his thesis research on "Characterization of Apical Targeting Mechanisms in Polarized Epithelial Cells" in the lab of Dr. Sharon Milgram.

He completed his postdoctoral training at the Howard Hughes Medical Institute and Duke University Medical Center. A 2007 Pew Scholar, Dr. Mohler is now an Associate Professor of Medicine and Molecular Physiology & Biophysics at the University of Iowa where his research focuses on ankyrin-based pathways for targeting and restriction of ion channels/transporters to specialized membrane domains.

His talk at noon in G202 MBRB is titled "Dysfunction in Ankyrin-Based Cellular Pathways in Human Disease."

Awards & Publications

Good news from the Otey lab:

Research Instructor **Silvia Goicoechea, PhD**, submitted an abstract to the **San Antonio Breast Cancer Symposium** entitled "Palladin contributes to invasive motility in human breast cancer cells." Not only was her abstract accepted for presentation, but "in recognition of [her] meritorious proffered paper on translational breast cancer research," the symposium director writes, Goicoechea has been granted the "Susan G Komen for the Cure-AACR Scholar Award," an award presented to fewer than 25% of applicants.



[You can find more information about the symposium here.](#)

Flu Shots

The University will be offering flu shots to employees this fall. Simply click on the Flu Clinic logo at ehs.unc.edu. The shots are free to employees covered under the State Health Plan, or one of the state's preferred provider organization (PPO) plans. At your appointment, **you must present your State Plan/PPO card and a photo ID** for coverage under the plan. If you are not a member of the State Health Plan, you will be required to pay \$30 by cash or check at the time of vaccination.



ARRIVALS, DEPARTURES & MILESTONES

Armin Just, MD, PhD, is leaving the department after eight years in the Arendshorst lab. He has accepted a position as a professor in the Department of Physiology (Physiologisches Institut 1) at the Albert-Ludwigs-Universitaet Freiburg im Breisgau, Germany. As is typical for German positions, teaching and research responsibilities will be about 50% each. Friends and colleagues offer the following words about Armin's influence:



Armin, Wiriya and Minya

Armin has been the backbone of the Arendshorst lab. He has served as animal coordinator and has helped the rest of us with all of our animal problems. He also has developed a program to analyze renal blood flow and mean arterial pressure measurements in rats—something we would be lost without and could not purchase. Armin is also the most ethical person I have ever met and has helped me with any ethical dilemma I have had over the last 4+ years. He is a brilliant scientist and can answer any renal physiology question you can throw at him. He is an amazing teacher and generally great guy and we will miss him greatly. That being said, I am so very happy that he has been given the opportunity to advance his career that he is so deserving of. Graduate student Tiffany Thai

Armin Just has been my friend and colleague for 8 years. He is what every lab needs...a person who knows where everything is, how everything works, and is more than willing to show you how to do things. He taught me about autoregulation, about tricks with my computer, about how to change the xenon arc lamp in our fluorescence set up and other things too many to recount. I watched him grow as a scientist, fall in love and get married and become the grinning father of a beautiful little girl. Although I shall miss him greatly, I am filled with joy that he will have new opportunities both in his professional and family life. Prof. Susan Fellner, MD

Armin met his wife Wiriya Phokhwang in Chapel Hill while Wiriya was working on a PhD at the School of Nursing, and they have a daughter, Phapratana Annabel Minya Just, who was born August 26, 2007 at 12:49 am, weighing 5 pounds and 8 ounces. Wiriya finished her studies at the School of Nursing UNC in 2007 and had to return to Thailand due to the requirements of her fellowship. Wiriya and Minya now live in Thailand... Freiburg is much closer to Thailand than Chapel Hill is! *Armin, we wish you the very best.*

New to the Department...

Meredith Brown, PhD, is a postdoctoral fellow in the **Tzima lab**. She did her doctoral work in **Albert Reynolds' lab** at Vanderbilt University. She will be studying the role of mini-TyrRS in angiogenesis.



Meredith Brown



Kris Wettermark

Lantz Mackey has joined the **Rawls lab** as a research technician. Lantz earned a B.S. in Biology from the University of Mary Washington in Fredericksburg, VA. He comes to the department from Richmond where he completed a post-baccalaureate certificate in microbiology and immunology.



Lantz Mackey

Kris Wettermark has joined Kirk McNaughton in **the Histology Core** as a research specialist. Kris also teaches a biotechnology course part-time at Piedmont Community College, is an avid gardener, and enjoys outdoor activities, including boating and fishing.

Please welcome our new colleagues!

Department Seminars - October 2008

G202 MBRB at 12:00 - Exceptions noted in red.

Online at: <http://www.med.unc.edu/physiolo/calendar>

October 2 **1131 Bioinformatics at 12:30**
Molecular Control of Cortical Projection Neuron Identity and Connectivity

Nenad Sestan, MD, PhD
Associate Professor of Neurobiology, Yale University

October 6
Dysfunction in Ankyrin-Based Cellular Pathways in Human Disease

Peter J. Mohler, PhD
Associate Professor of Medicine and Molecular Physiology & Biophysics, University of Iowa

October 13
Epigenetics in Human Health and Disease

Randy L. Jirtle, PhD
Professor of Radiation Oncology and Pathology, Duke University

October 20
A Role for VEGF as a Negative Regulator of Pericyte Function and Blood Vessel Maturation

David Cheresh, PhD
Associate Director for Translational Research, Moores Cancer Center; Professor of Pathology, UCSD

October 30 **1131 Bioinformatics at 12:30**
Language, Music, and Subcortical Transcription of Sound

Nina Kraus, PhD
Hugh Knowles Professor of Neurobiology and Physiology, Northwestern University

EVENTS

9th Annual UNC Neuroscience Symposium

Thursday, October 16, 2008

9am until 1pm

Carolina Club on UNC Campus

9:00am – 9:50am Arturo Alvarez-Buylla, PhD
“Mosaic of Neural Stem Cells in the Adult Brain”

9:55am – 10:45am Catherine Dulac, PhD
“Molecular Architecture of Instinctive Behavior in Rodents”

11:10am – 12:00pm Sebastian Seung, PhD
“Imagining functional connectomics”

12:05pm – 1:00pm Marcus Raichle, MD
“Two Views of Brain Function”

1:00pm – 2:00pm Buffet Luncheon

Please be sure to RSVP to megan_murphy@med.unc.edu or call 919-843-8536 if you plan to attend this event

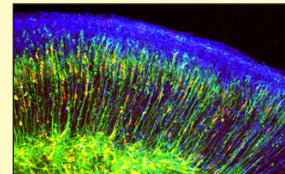
UNC Developmental Biology Symposium

Thursday, November 6, 2008

George Watts Hill Alumni Center

Keynote speaker:

Marnie Halpern from the Carnegie Institute for Science



Abstracts for posters are being accepted from post-doctoral fellows and graduate students for this event. The sessions will showcase the variety of developmentally related research interests at UNC. Abstracts detailing research in progress and preliminary results are also encouraged, as this symposium will focus on training in developmental biology at UNC. Abstracts should include title, authors and text of 200 words or less. Abstract submission includes automatic registration. Registration is now open for all and is free.

Registration & Abstract submission must be made online at http://devbio.unc.edu/db08_Fall/index.htm

Abstract submission deadline: Friday, October 10, 2008
Registration deadline: Monday, October 27, 2008

Questions or comments should be directed to Sausyty Hermreck at sausytyh@med.unc.edu

Your tax-deductible gift to the UNC Department of Cell & Molecular Physiology will foster research, innovative teaching, and support a wide range of activities. Contact Rich Lotstein at 843-6190 or richlot@med.unc.edu for information.

Please send feedback and submissions to the newsletter to Adriana Tavernise at adrianat@med.unc.edu

Department of Cell & Molecular Physiology
5200 Medical Biomolecular Research Building, CB #7545
University of North Carolina at Chapel Hill
Chapel Hill, NC 27599-7545



(919) 966-5241
(919) 966-6927 fax
<http://www.med.unc.edu/physiology>