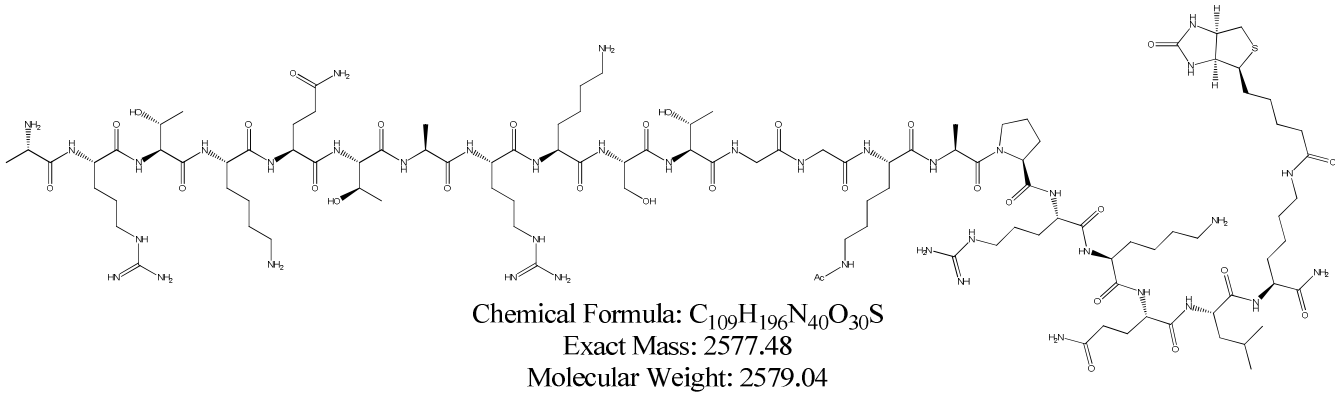
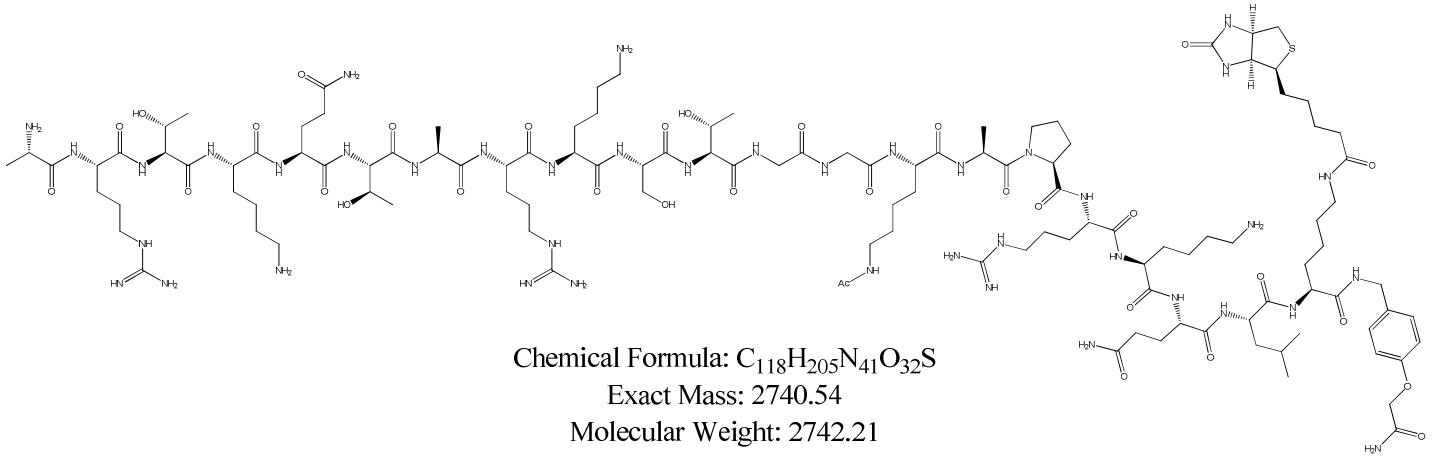


C:\Documents and Settings\KK\My Documents\MALDI MS\01-30-09 P1-30\IC2_MS_1.12d

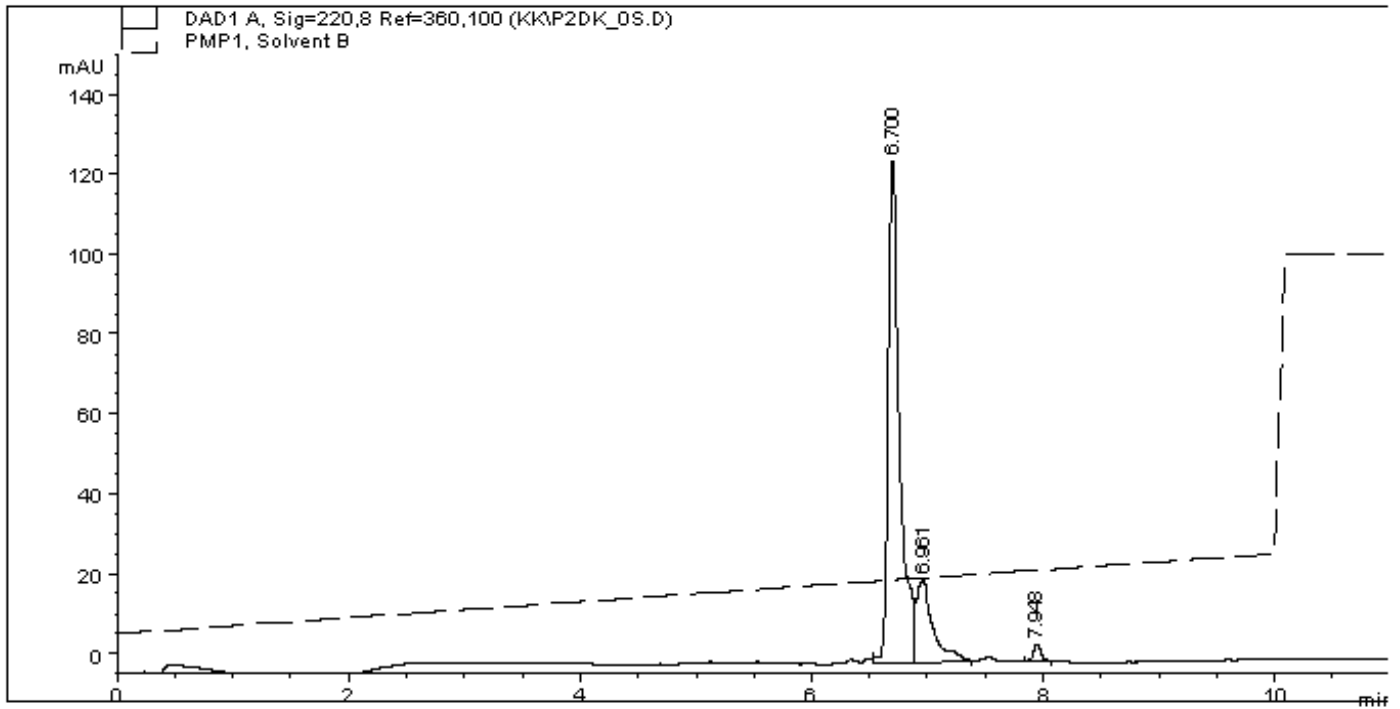
Printed: 11:22, April 06, 2010



Byproduct - Rink linker adduct:



5-25% B/ 10min 2ml/min Waters Symmetry C18 3.5um 50x4.6mm



=====
 Area Percent Report
 =====

Sorted By : Signal
 Multiplier : 1.0000
 Dilution : 1.0000

Signal 1: DAD1 A, Sig=220,8 Ref=360,100

Peak #	RetTime [min]	Type	Width [min]	Area [mAU*s]	Height [mAU]	Area %
1	6.700	VV	0.1000	859.80347	125.37196	79.4560
2	6.961	VB	0.1382	202.31087	20.49547	18.6959
3	7.948	BV	0.0720	19.99829	4.24010	1.8481