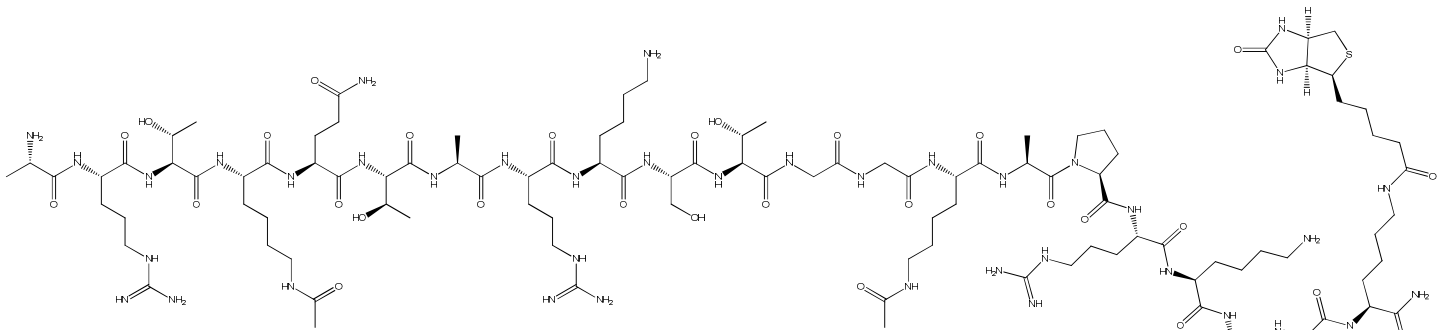


C:\Documents and Settings\KK\My Documents\MALDI MSI\02-02-09 P1-30\D4\_MS\_1.t2d

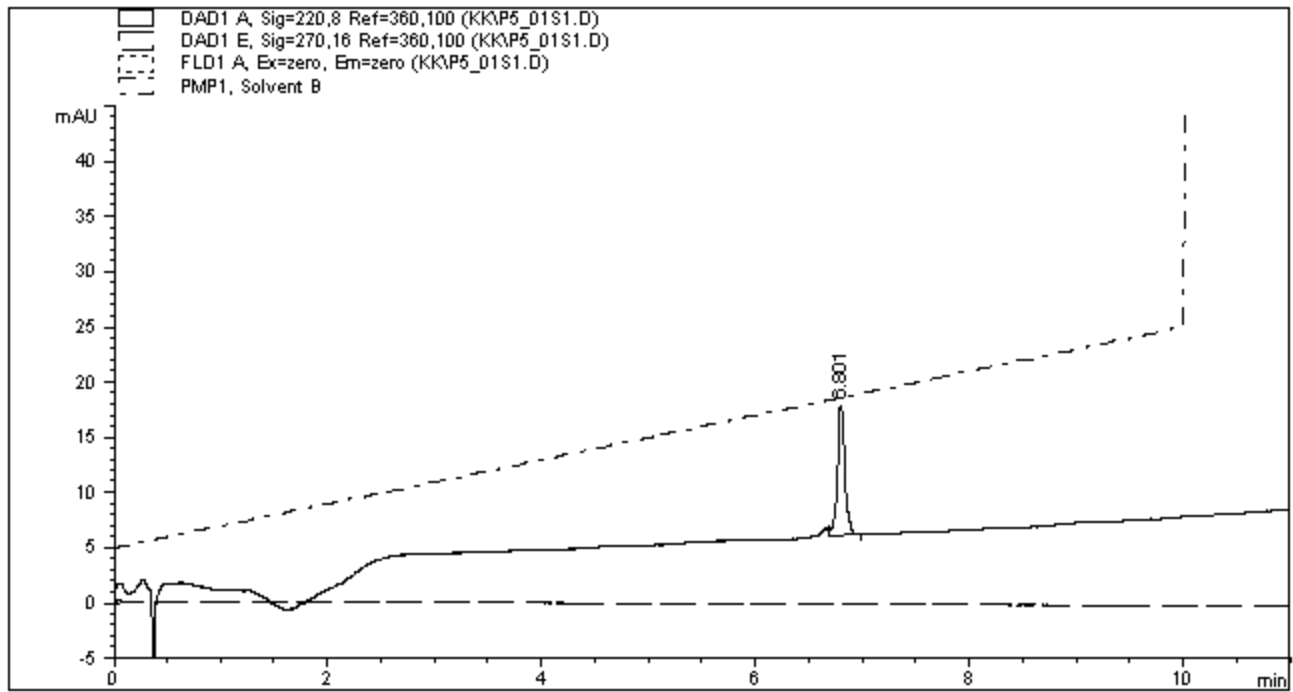
Printed: 13:08, April 22, 2010



Chemical Formula:  $C_{111}H_{198}N_{40}O_{31}S$

Exact Mass: 2619.49

Molecular Weight: 2621.07



=====  
 Area Percent Report  
 =====

Sorted By : Signal  
 Multiplier : 1.0000  
 Dilution : 1.0000

Signal 1: DAD1 A, Sig=220,8 Ref=360,100

Peak #	RetTime [min]	Type	Width [min]	Area [mAU*s]	Height [mAU]	Area %
1	6.801	VB	0.0732	58.05709	11.84056	100.0000