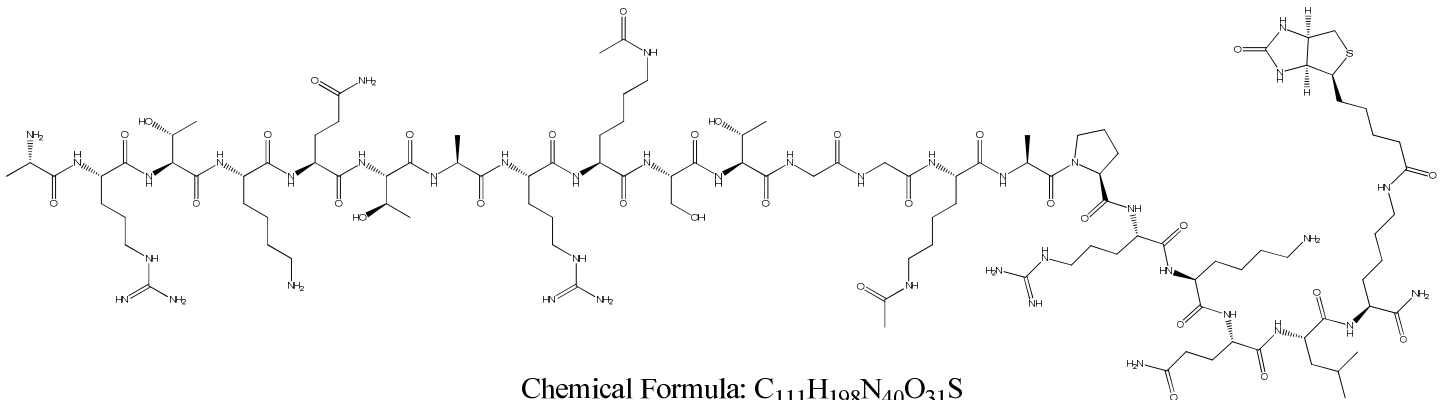


C:\Documents and Settings\KIKI\My Documents\MALDI MSI\02-02-09 P1-30\ID6_MS_1.t2d

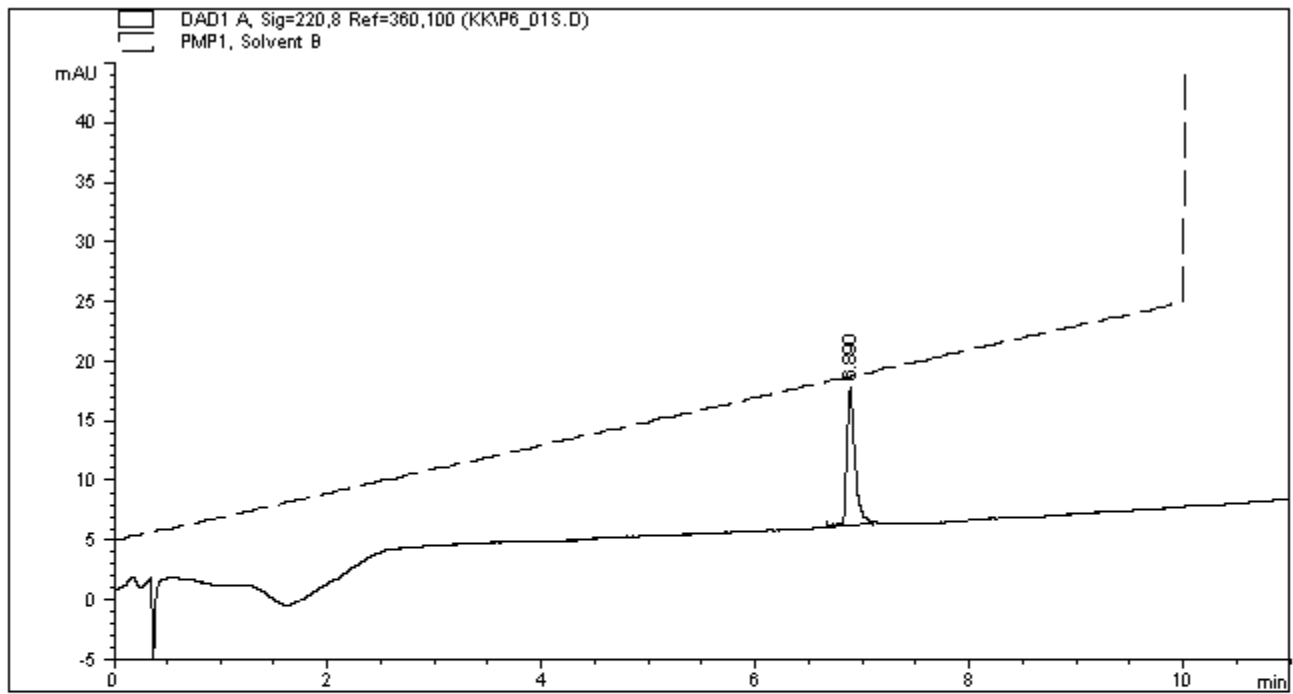
Printed: 13:12, April 22, 2010



Chemical Formula: $C_{111}H_{198}N_{40}O_{31}S$

Exact Mass: 2619.49

Molecular Weight: 2621.07



=====
 Area Percent Report
 =====

Sorted By : Signal
 Multiplier : 1.0000
 Dilution : 1.0000

Signal 1: DAD1 A, Sig=220,8 Ref=360,100

Peak #	RetTime [min]	Type	Width [min]	Area [mAU*s]	Height [mAU]	Area %
1	6.890	BB	0.0788	62.76110	11.65314	100.0000