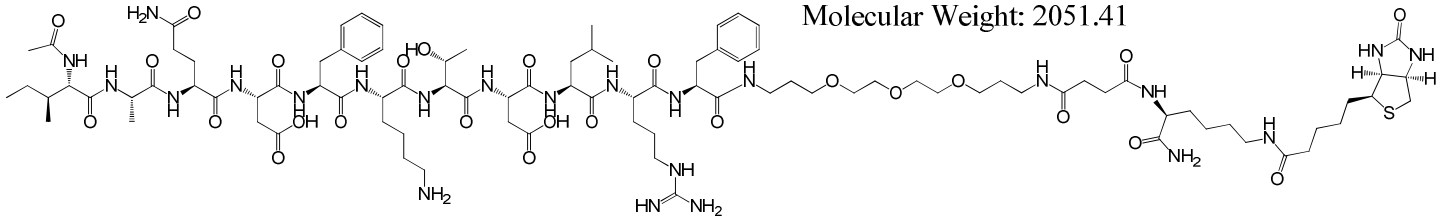


Chemical Formula: C₉₄H₁₅₁N₂₃O₂₆S

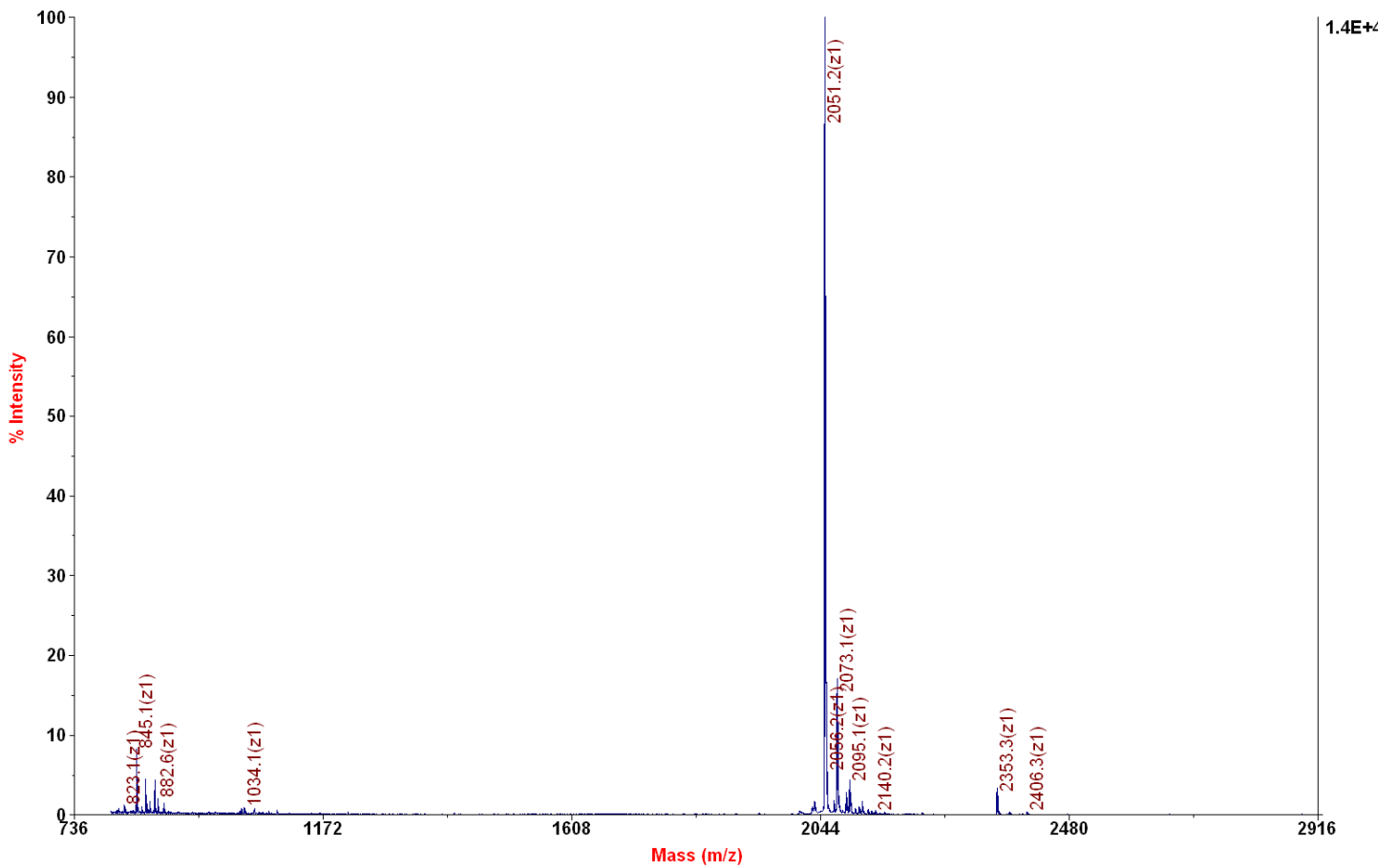
Exact Mass: 2050.09

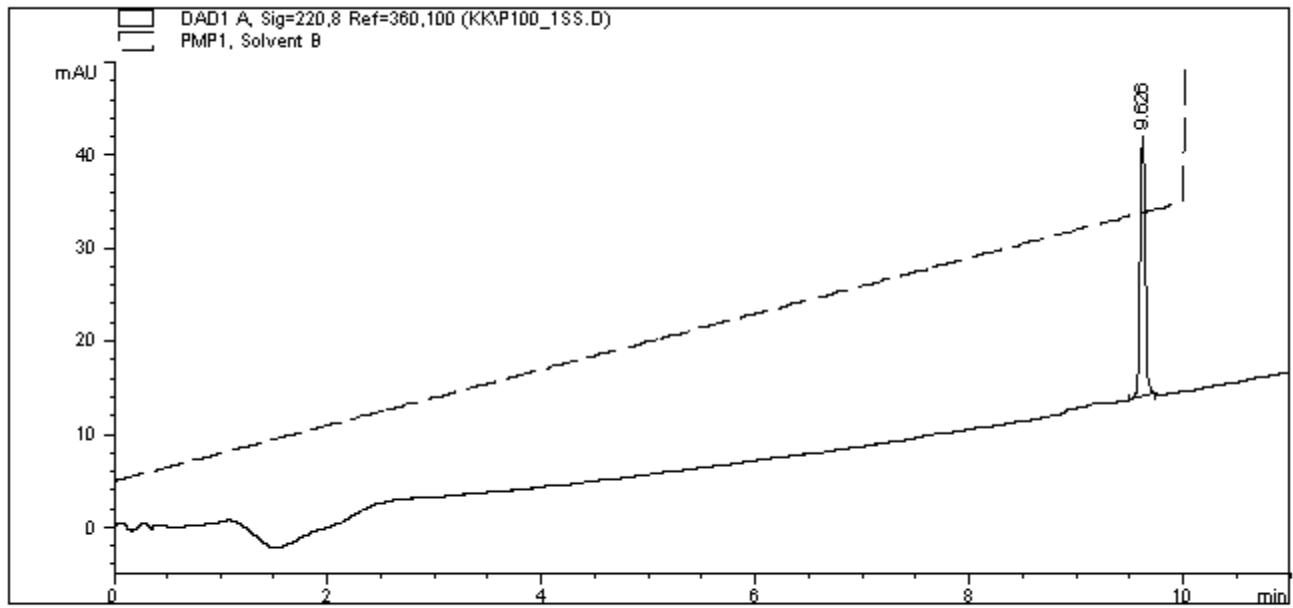
Molecular Weight: 2051.41



Applied Biosystems 4700 Proteomics Analyzer 211

4700 Reflector Spec #1 MC[BP = 2052.2, 13662]





=====
Area Percent Report
=====

Sorted By : Signal
Multiplier : 1.0000
Dilution : 1.0000

Signal 1: DAD1 A, Sig=220,8 Ref=360,100

Peak #	RetTime [min]	Type	Width [min]	Area [mAU*s]	Height [mAU]	Area %
1	9.626	BB	0.0477	86.98254	28.03711	100.0000

Totals : 86.98254 28.03711