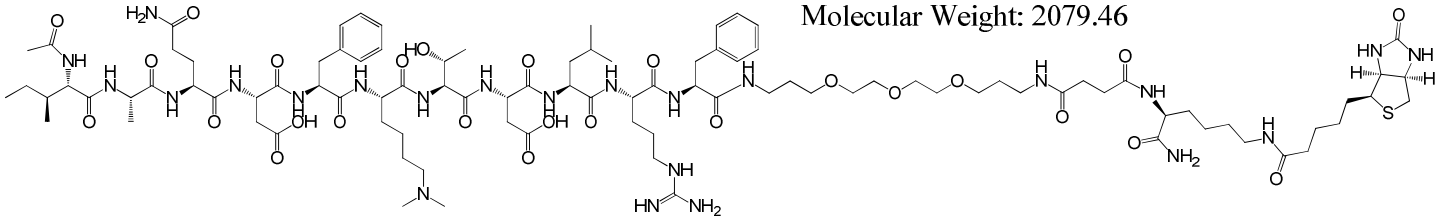


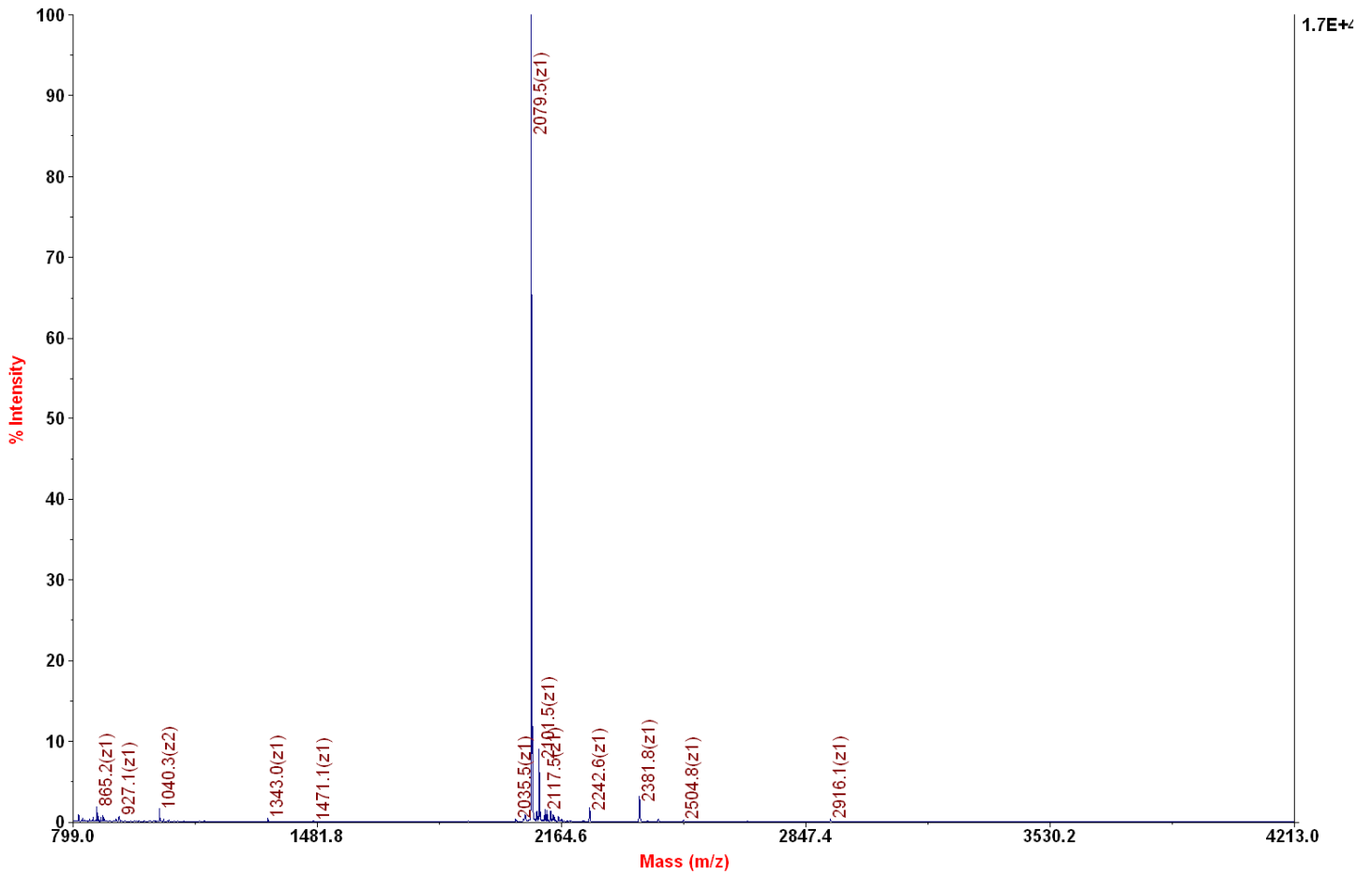
Chemical Formula: C<sub>96</sub>H<sub>155</sub>N<sub>23</sub>O<sub>26</sub>S

Exact Mass: 2078.12

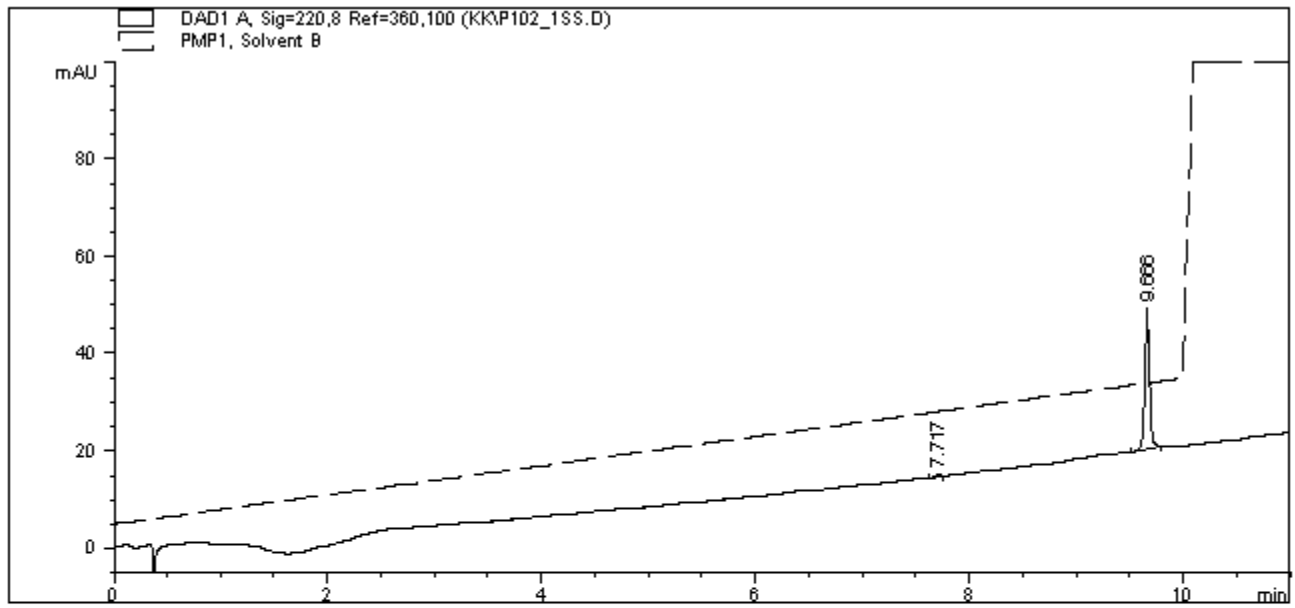
Molecular Weight: 2079.46



4700 Reflector Spec #1 MC[BP = 2080.5, 17498]



C:\...K19\_MS.t2d  
Acquired:



=====  
 Area Percent Report  
 =====

Sorted By : Signal  
 Multiplier : 1.0000  
 Dilution : 1.0000

Signal 1: DAD1 A, Sig=220,8 Ref=360,100

Peak #	RetTime [min]	Type	Width [min]	Area [mAU*s]	Height [mAU]	Area %
1	7.717	BV	0.0500	1.60299	4.15977e-1	1.7333
2	9.666	BB	0.0482	90.87865	28.91437	98.2667

Totals :                      92.48165    29.33035