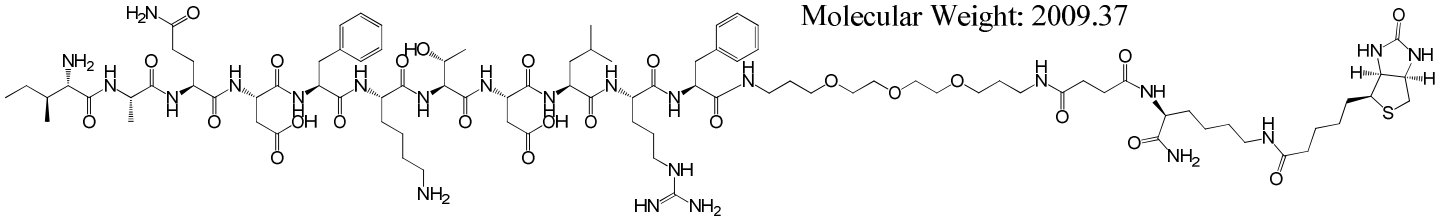


Chemical Formula: C₉₂H₁₄₉N₂₃O₂₅S

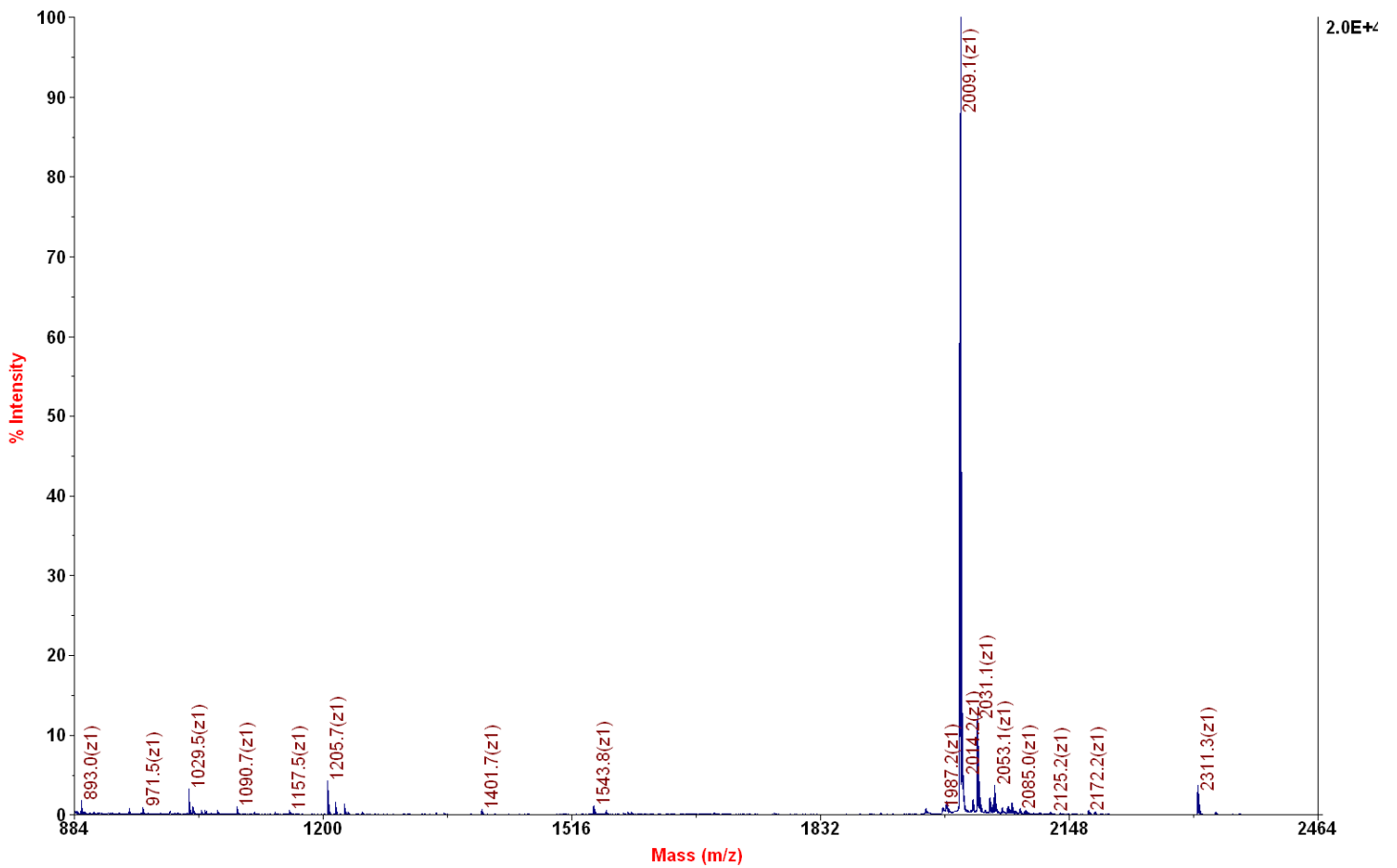
Exact Mass: 2008.08

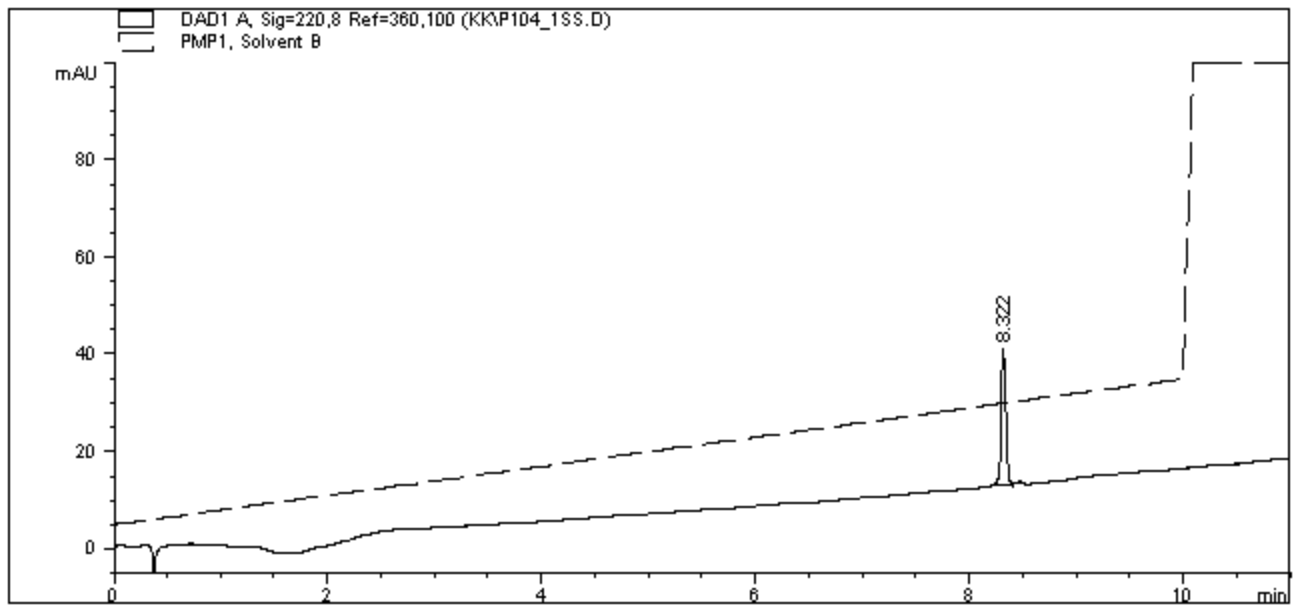
Molecular Weight: 2009.37



Applied Biosystems 4700 Proteomics Analyzer 211

4700 Reflector Spec #1 MC[BP = 2010.1, 19900]





=====
 Area Percent Report
 =====

Sorted By : Signal
 Multiplier : 1.0000
 Dilution : 1.0000

Signal 1: DAD1 A, Sig=220,8 Ref=360,100

Peak #	RetTime [min]	Type	Width [min]	Area [mAU*s]	Height [mAU]	Area %
1	8.322	BB	0.0445	80.00196	27.82931	100.0000

Totals : 80.00196 27.82931