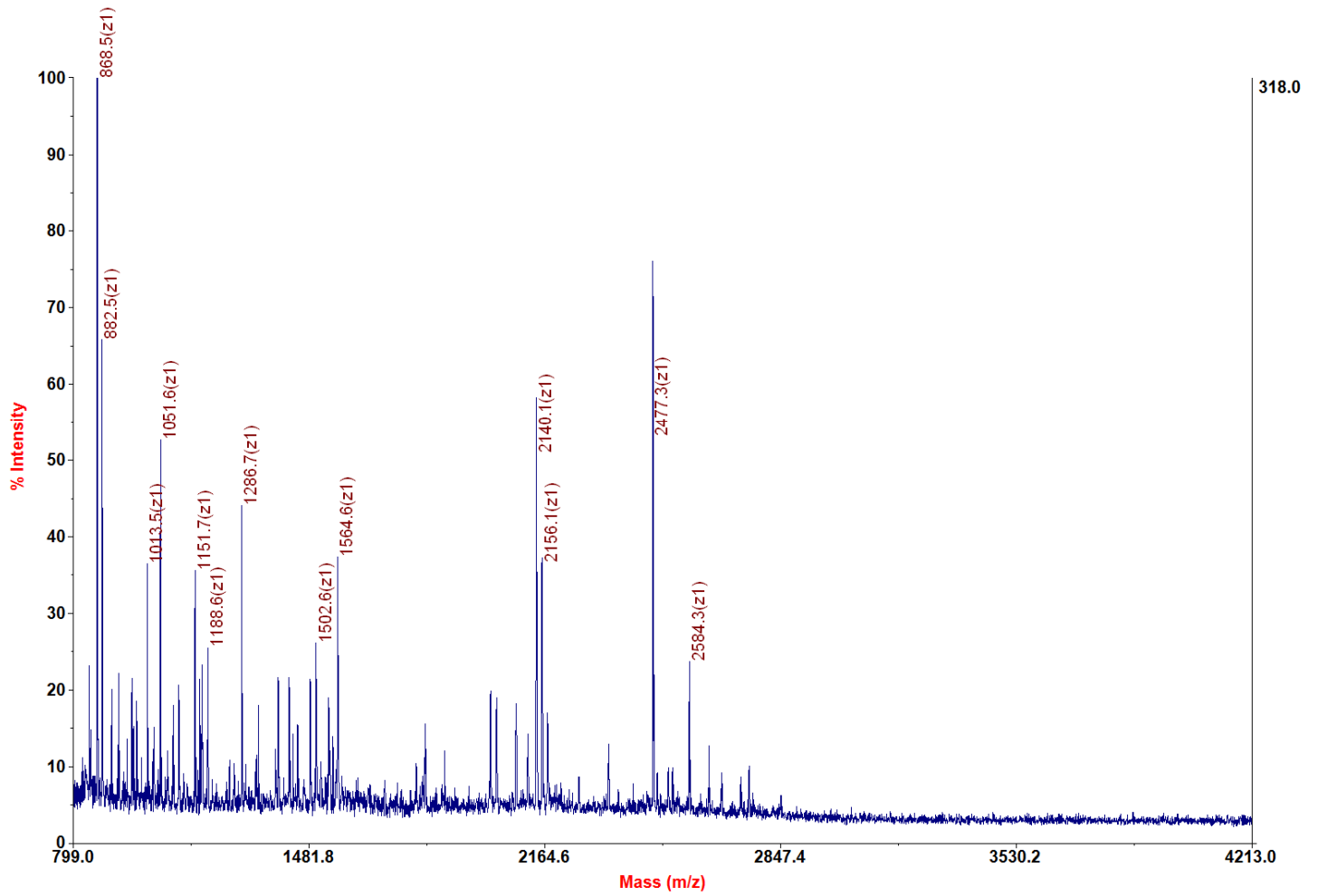
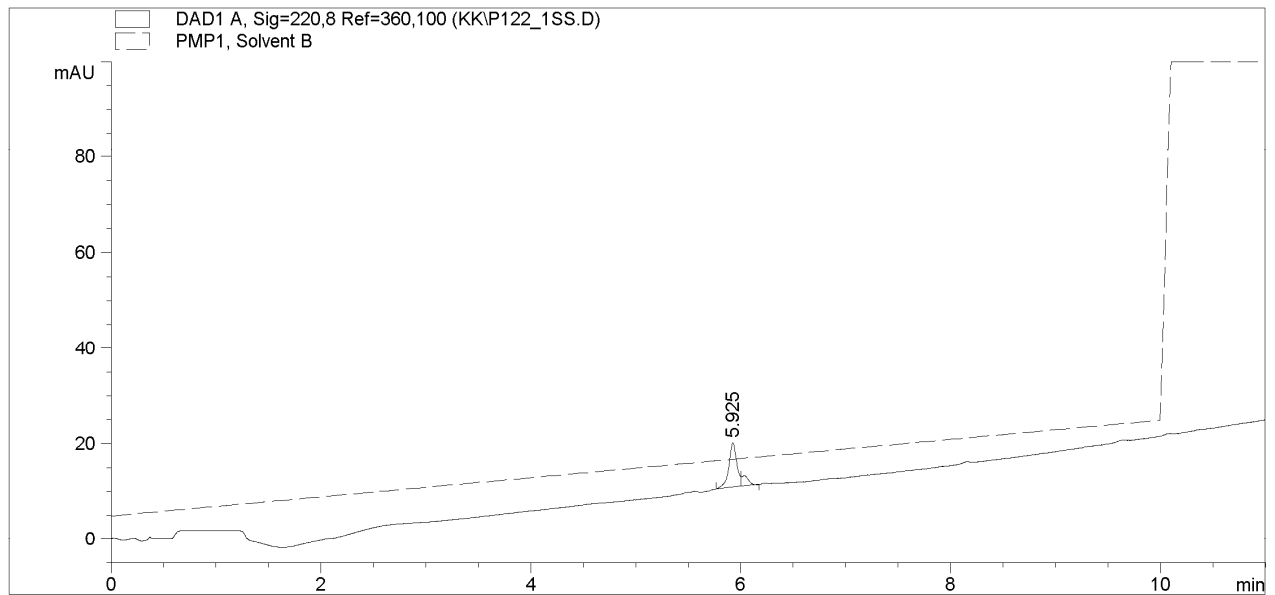


**Applied Biosystems 4700 Proteomics Analyzer 211**

**4700 Reflector Spec #1 MC[BP = 868.5, 318]**





=====  
 Area Percent Report  
 =====

Sorted By : Signal  
 Multiplier : 1.0000  
 Dilution : 1.0000

Signal 1: DAD1 A, Sig=220,8 Ref=360,100

Peak #	RetTime [min]	Type	Width [min]	Area [mAU*s]	Height [mAU]	Area %
1	5.925	BV	0.0781	49.76022	9.27722	83.8295
2	6.034	VP	0.0544	9.59863	2.19953	16.1705

Totals :                      59.35884    11.47675