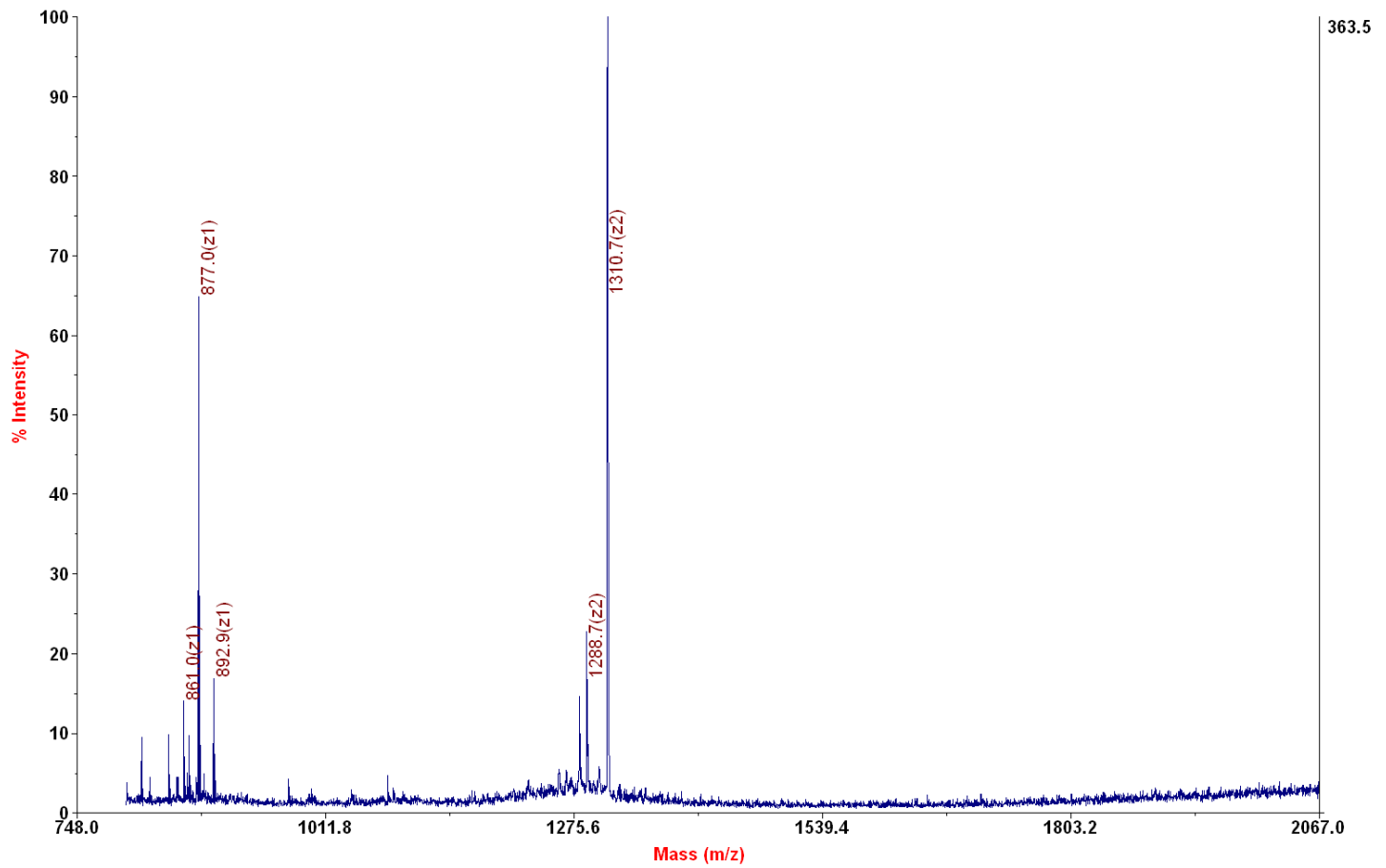


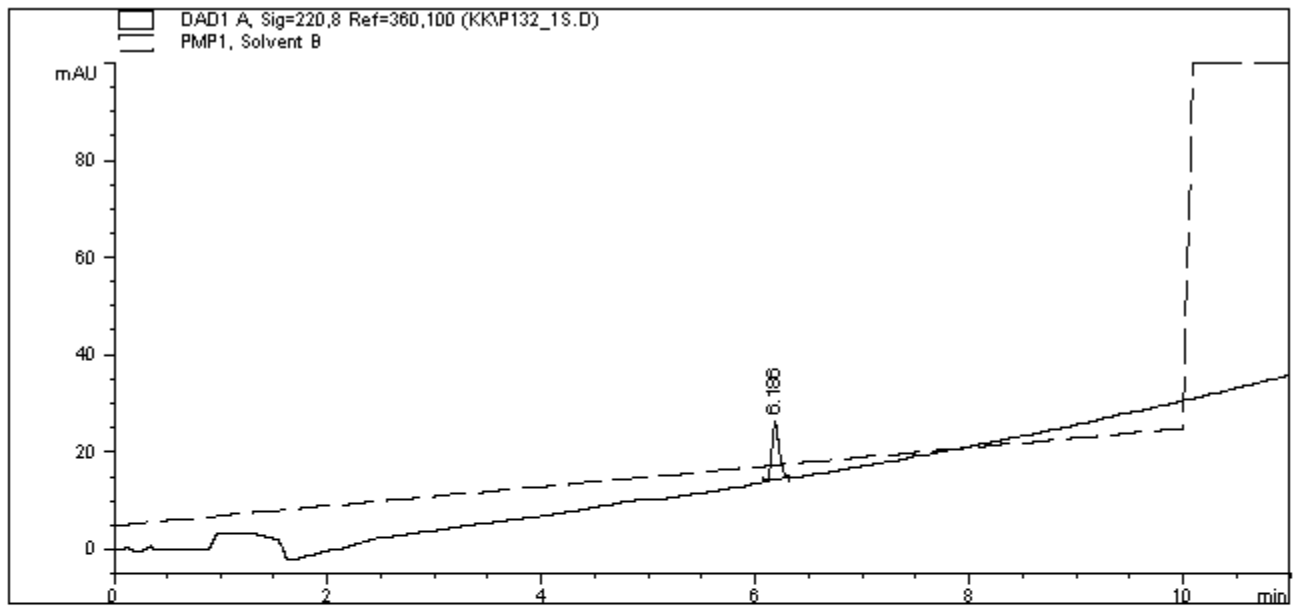
Chemical Formula: $C_{113}H_{208}N_{40}O_{29}S^{2+}$
 Exact Mass: 2621.57
 Molecular Weight: 2623.18

Peptide P132 has a permanent 2+ charge (two Kme3 residues).

Applied Biosystems 4700 Proteomics Analyzer 211

4700 Reflector Spec #1 MC[BP = 2518.2, 1858]





=====
 Area Percent Report
 =====

Sorted By : Signal
 Multiplier : 1.0000
 Dilution : 1.0000

Signal 1: DAD1 A, Sig=220,8 Ref=360,100

Peak #	RetTime [min]	Type	Width [min]	Area [mAU*s]	Height [mAU]	Area %
1	6.186	BB	0.0708	56.94975	12.02171	100.0000

Totals : 56.94975 12.02171