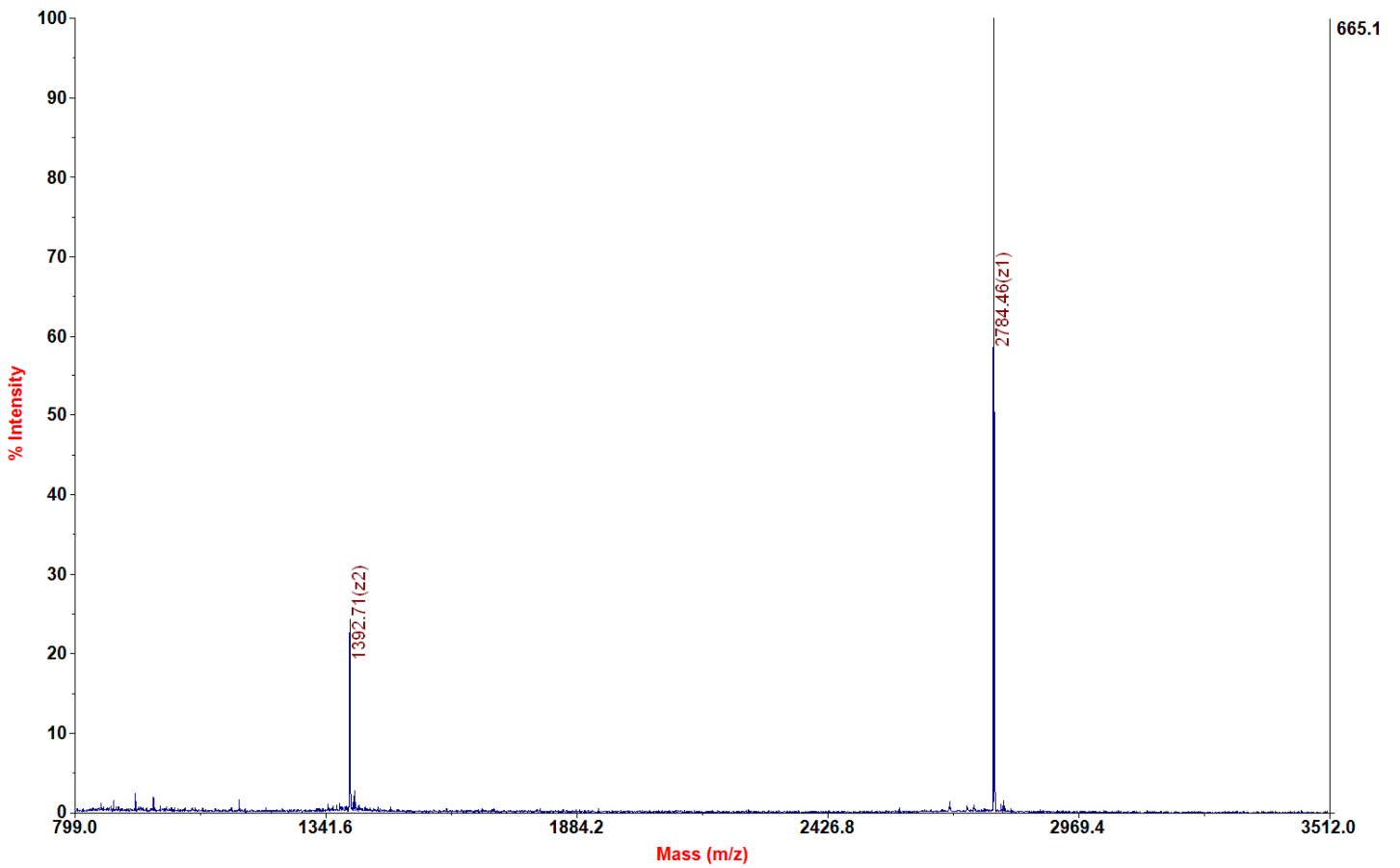
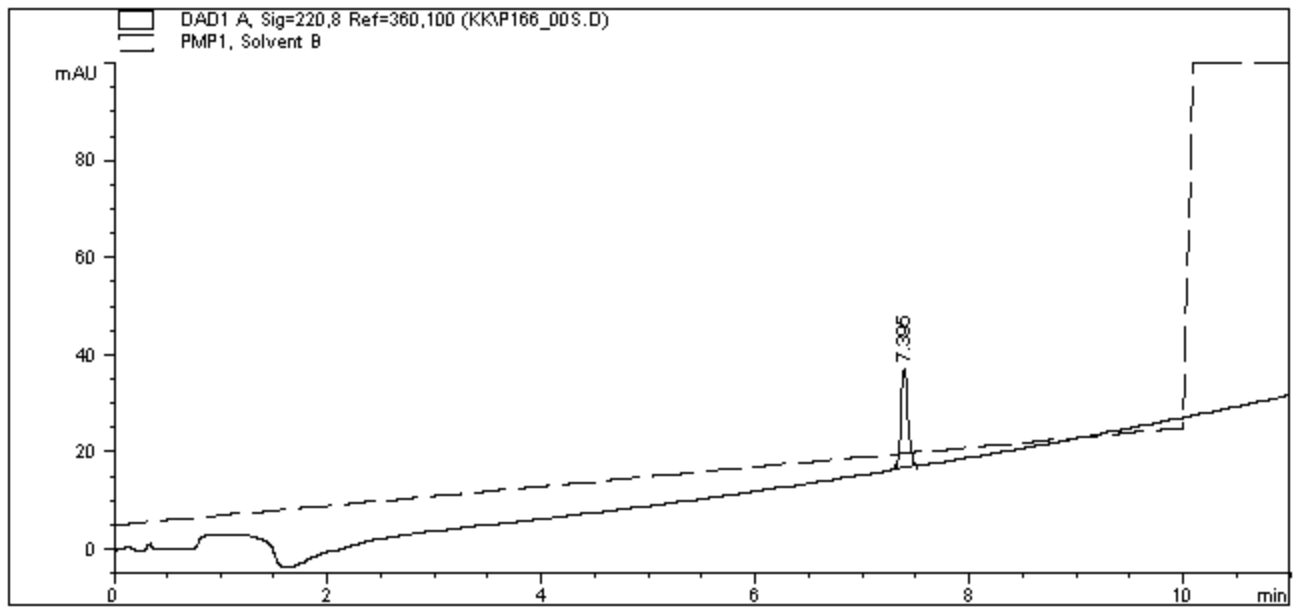


Chemical Formula: $C_{116}H_{208}N_{40}O_{35}PS^+$
Exact Mass: 2784.52
Molecular Weight: 2786.18

Applied Biosystems 4700 Proteomics Analyzer 7017

4700 Reflector Spec #1 MC[BP = 2785.5, 665]





=====
 Area Percent Report
 =====

Sorted By : Signal
 Multiplier : 1.0000
 Dilution : 1.0000

Signal 1: DAD1 A, Sig=220,8 Ref=360,100

Peak #	RetTime [min]	Type	Width [min]	Area [mAU*s]	Height [mAU]	Area %
1	7.395	BB	0.0692	91.74152	20.10373	100.0000

Totals : 91.74152 20.10373

Results obtained with enhanced integrator!