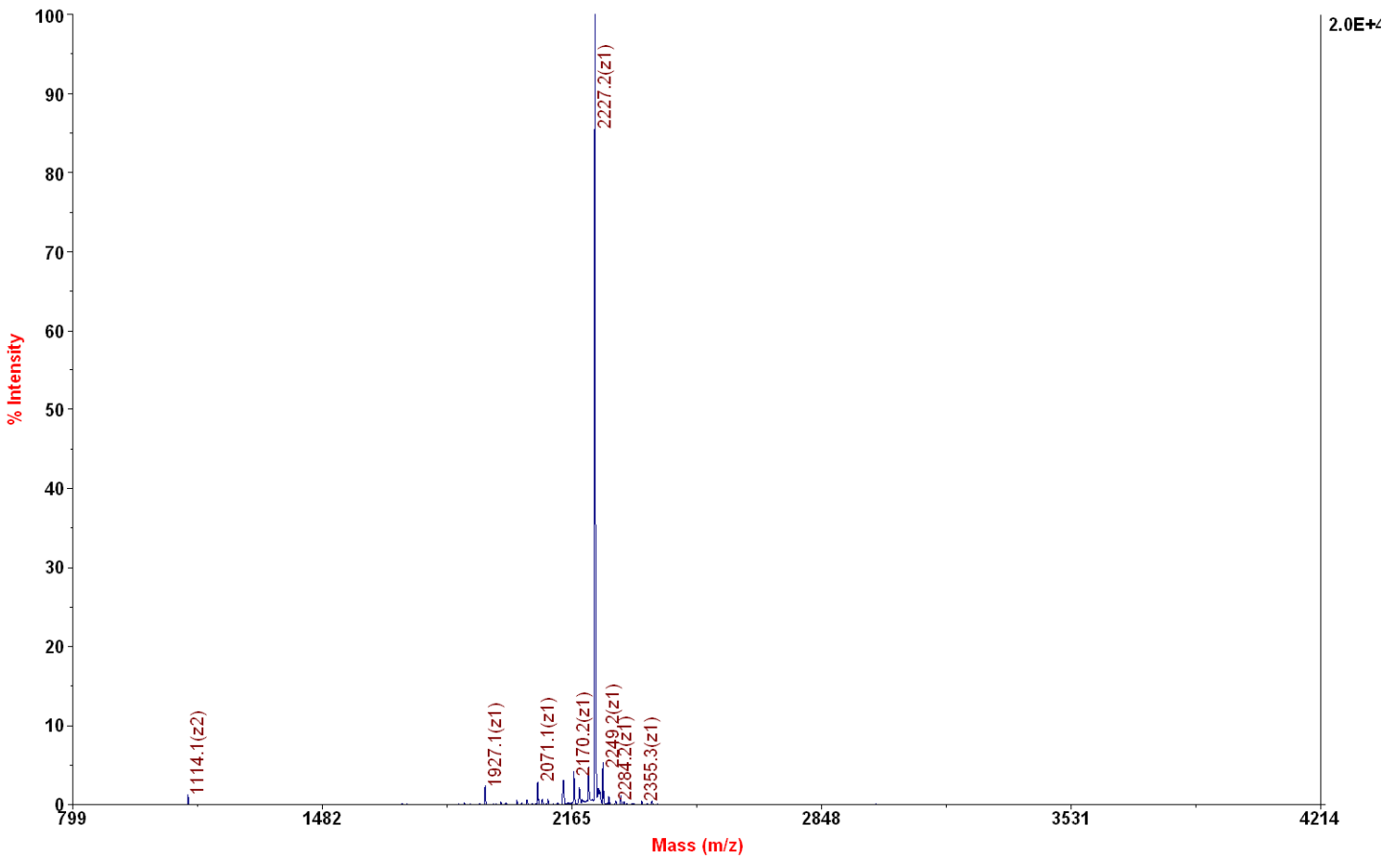
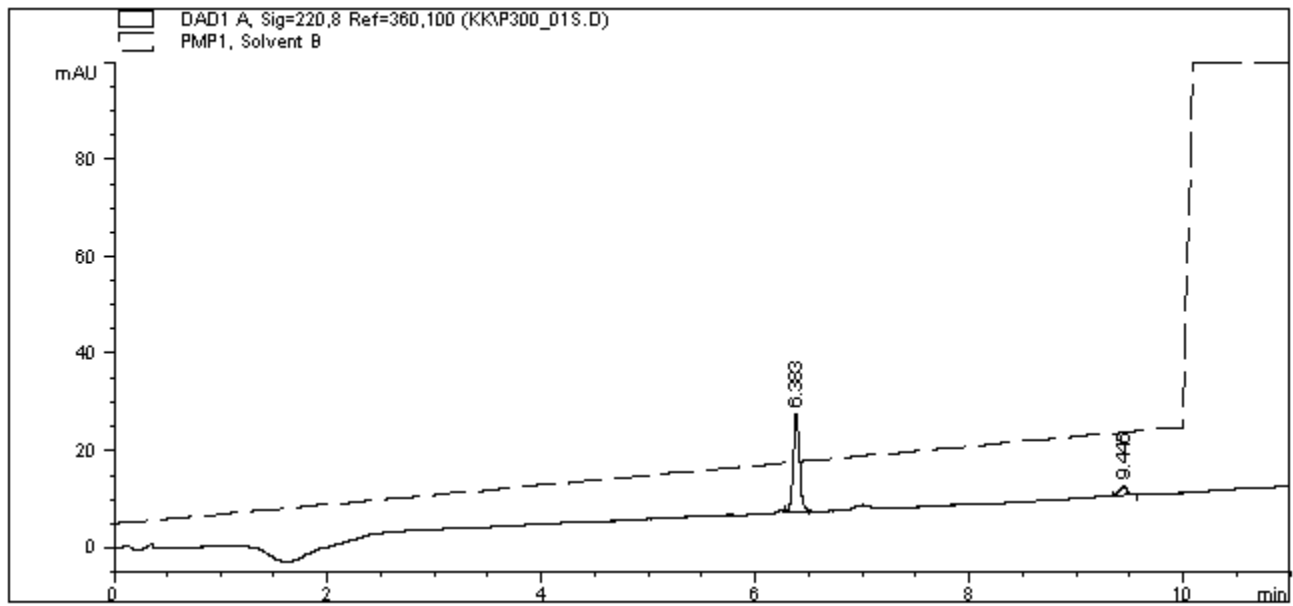


Chemical Formula: C<sub>93</sub>H<sub>171</sub>N<sub>35</sub>O<sub>26</sub>S  
 Exact Mass: 2226.29  
 Molecular Weight: 2227.64

**Applied Biosystems 4700 Proteomics Analyzer 211**

**4700 Reflector Spec #1 MC[BP = 2228.2, 20054]**





=====  
 Area Percent Report  
 =====

Sorted By : Signal  
 Multiplier : 1.0000  
 Dilution : 1.0000

Signal 1: DAD1 A, Sig=220,8 Ref=360,100

Peak #	RetTime [min]	Type	Width [min]	Area [mAU*s]	Height [mAU]	Area %
1	6.383	BB	0.0627	83.77276	20.25827	90.7014
2	9.445	BB	0.0639	8.58828	1.73022	9.2986

Totals :                      92.36104    21.98849