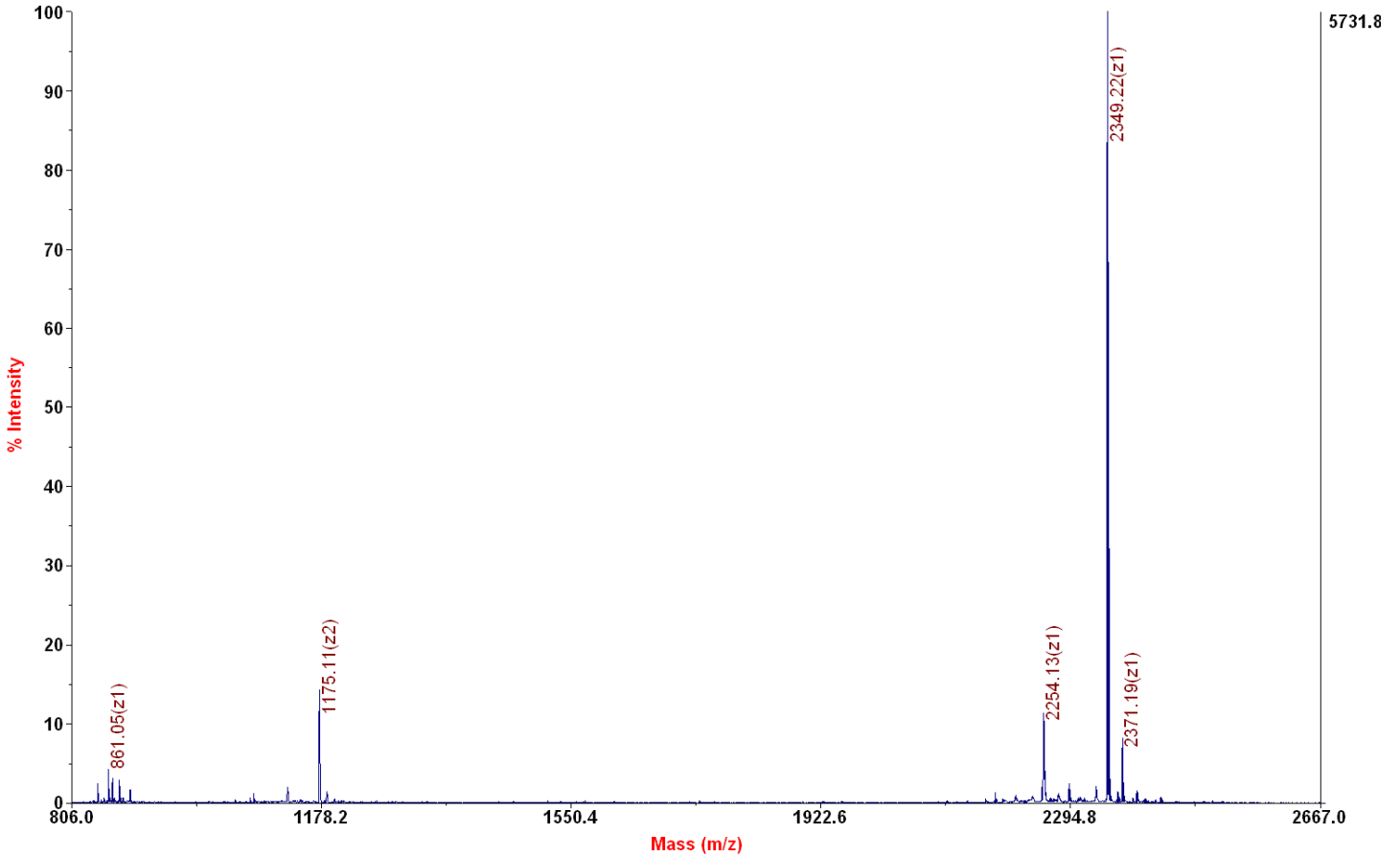
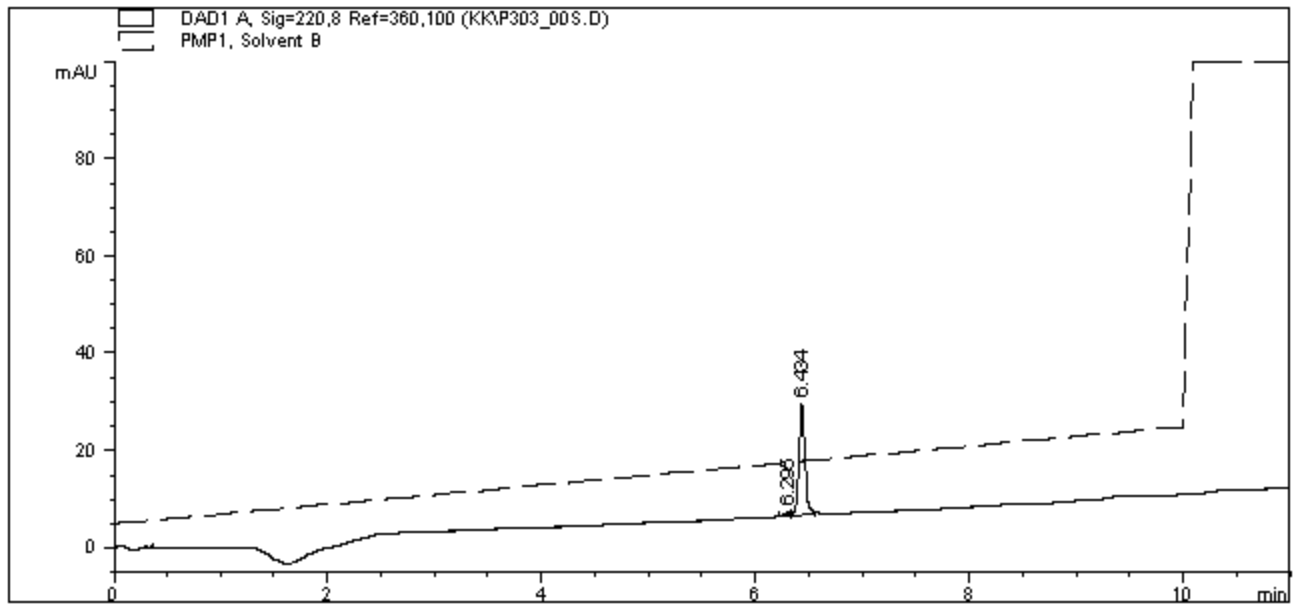


Chemical Formula:  $C_{95}H_{174}N_{35}O_{30}PS$   
Exact Mass: 2348.26  
Molecular Weight: 2349.65

**Applied Biosystems 4700 Proteomics Analyzer 7017**

**4700 Reflector Spec #1 MC[BP = 2350.2, 5732]**





=====  
 Area Percent Report  
 =====

Sorted By : Signal  
 Multiplier : 1.0000  
 Dilution : 1.0000

Signal 1: DAD1 A, Sig=220,8 Ref=360,100

Peak #	RetTime [min]	Type	Width [min]	Area [mAU*s]	Height [mAU]	Area %
1	6.295	PV	0.0414	2.45029	7.16643e-1	2.6495
2	6.434	VB	0.0609	90.03130	22.88831	97.3505

Totals :                      92.48159    23.60496