

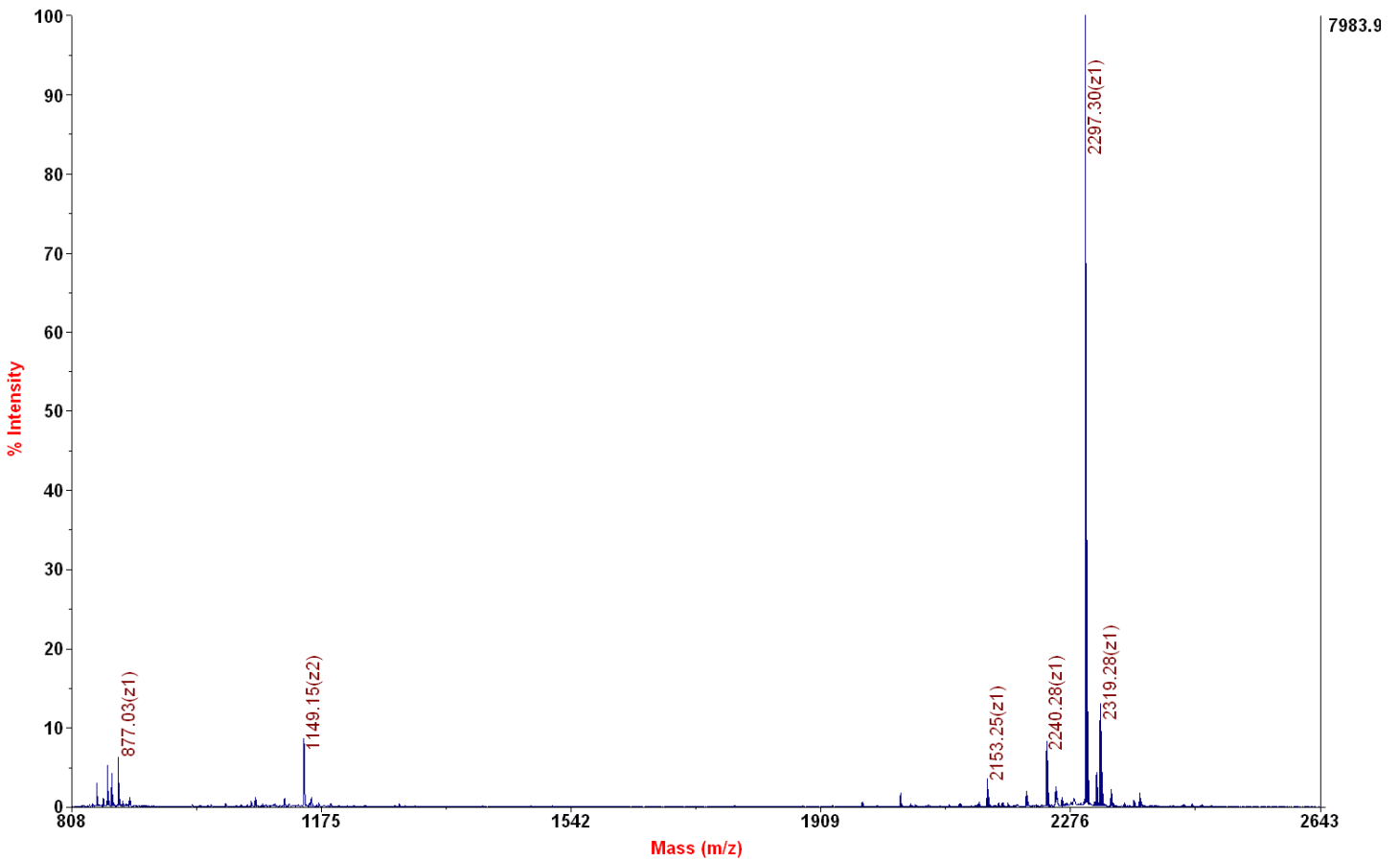
Chemical Formula: $C_{97}H_{177}N_{35}O_{27}S$

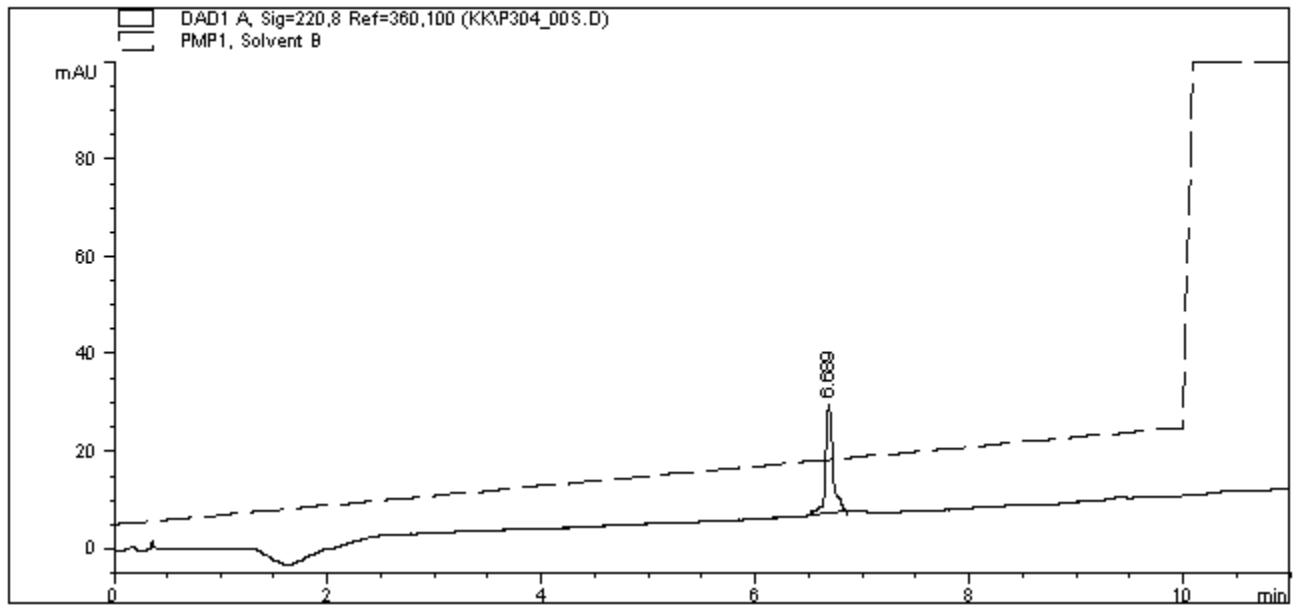
Exact Mass: 2296.33

Molecular Weight: 2297.73

Applied Biosystems 4700 Proteomics Analyzer 7017

4700 Reflector Spec #1 MC[BP = 2298.3, 7984]





=====
 Area Percent Report
 =====

Sorted By : Signal
 Multiplier : 1.0000
 Dilution : 1.0000

Signal 1: DAD1 A, Sig=220,8 Ref=360,100

Peak #	RetTime [min]	Type	Width [min]	Area [mAU*s]	Height [mAU]	Area %
1	6.689	BB	0.0691	105.21416	22.27885	100.0000

Totals : 105.21416 22.27885

Results obtained with enhanced integrator!