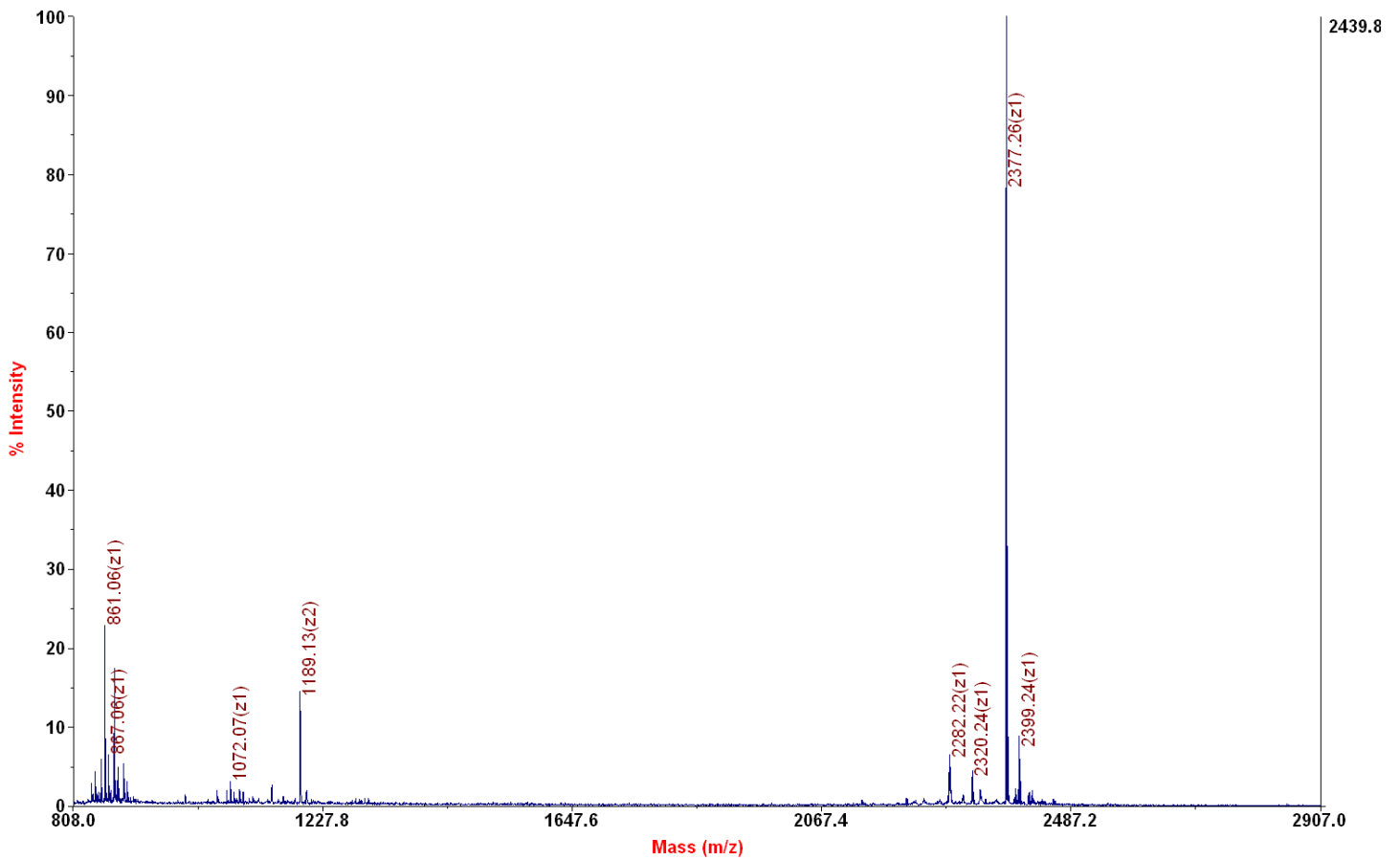
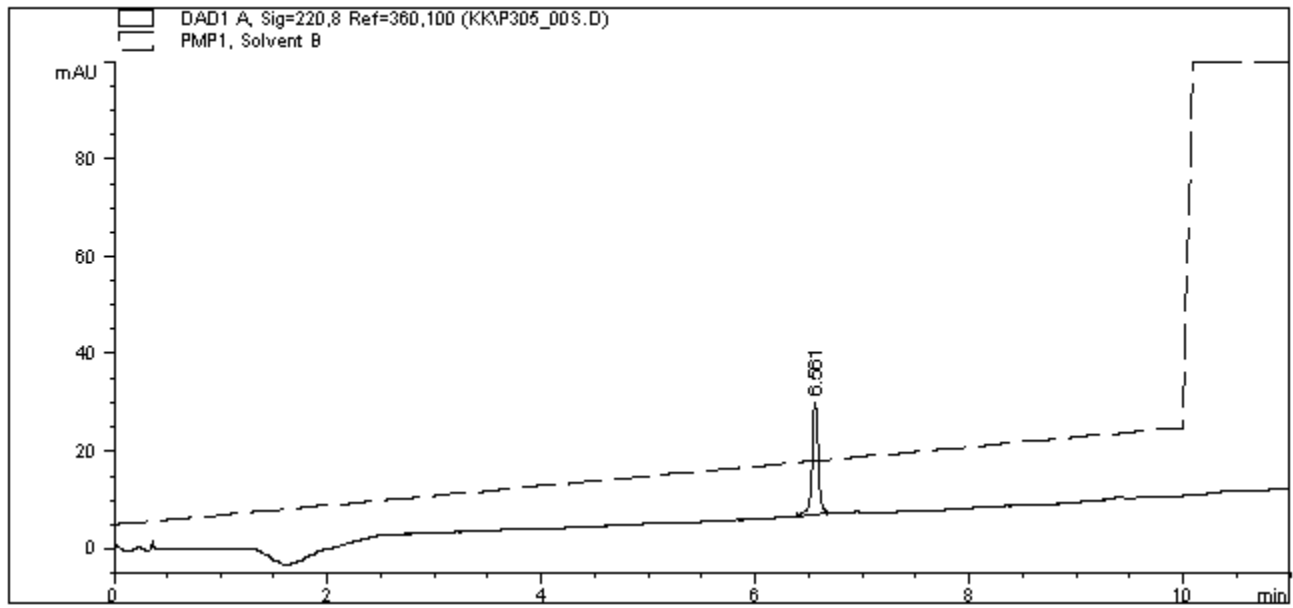


Chemical Formula: $C_{97}H_{178}N_{35}O_{30}PS$
 Exact Mass: 2376.29
 Molecular Weight: 2377.71

Applied Biosystems 4700 Proteomics Analyzer 7017

4700 Reflector Spec #1 MC[BP = 2378.3, 2440]





=====
 Area Percent Report
 =====

Sorted By : Signal
 Multiplier : 1.0000
 Dilution : 1.0000

Signal 1: DAD1 A, Sig=220,8 Ref=360,100

Peak #	RetTime [min]	Type	Width [min]	Area [mAU*s]	Height [mAU]	Area %
1	6.561	BB	0.0611	93.16357	22.84558	100.0000

Totals : 93.16357 22.84558

Results obtained with enhanced integrator!