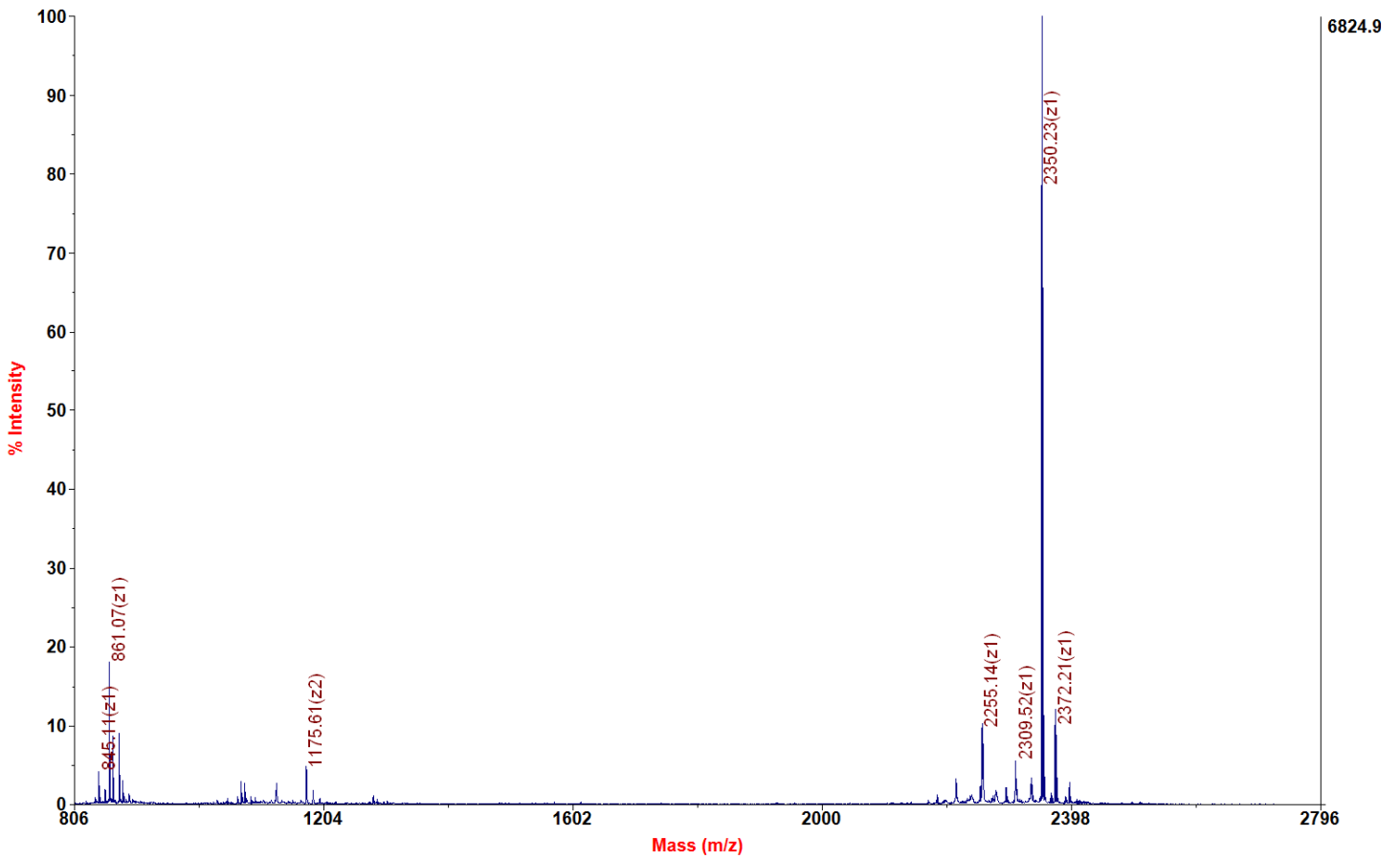
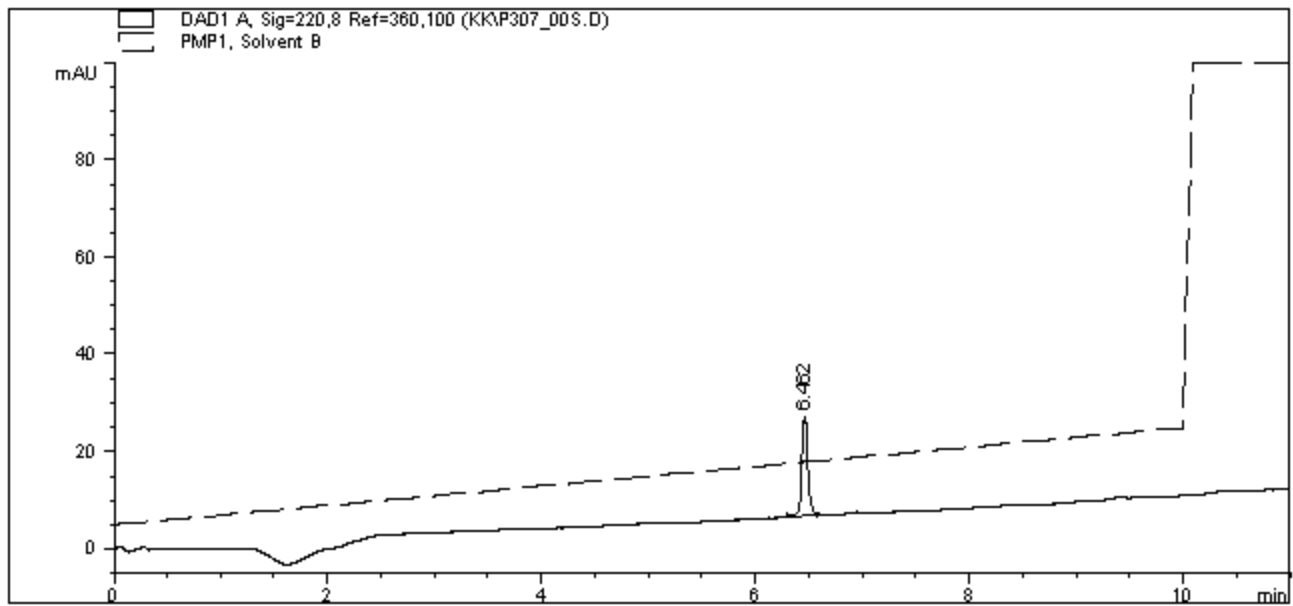


Chemical Formula: C₉₅H₁₇₃N₃₄O₃₁PS
 Exact Mass: 2349.25
 Molecular Weight: 2350.64

Applied Biosystems 4700 Proteomics Analyzer 7017

4700 Reflector Spec #1 MC[BP = 2351.2, 6825]





=====
 Area Percent Report
 =====

Sorted By : Signal
 Multiplier : 1.0000
 Dilution : 1.0000

Signal 1: DAD1 A, Sig=220,8 Ref=360,100

Peak #	RetTime [min]	Type	Width [min]	Area [mAU*s]	Height [mAU]	Area %
1	6.462	BB	0.0617	81.62218	20.40642	100.0000

Totals : 81.62218 20.40642

Results obtained with enhanced integrator!