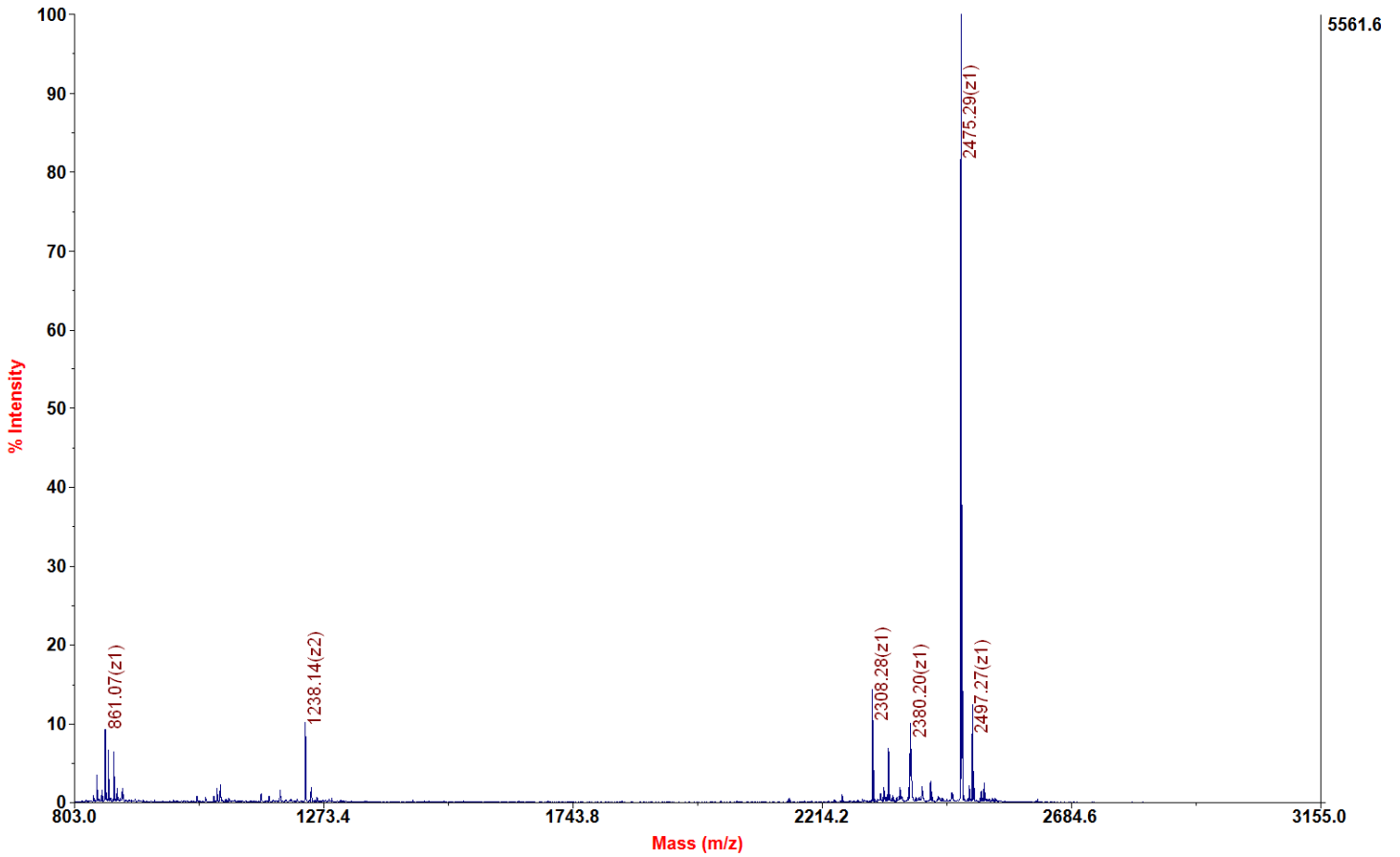
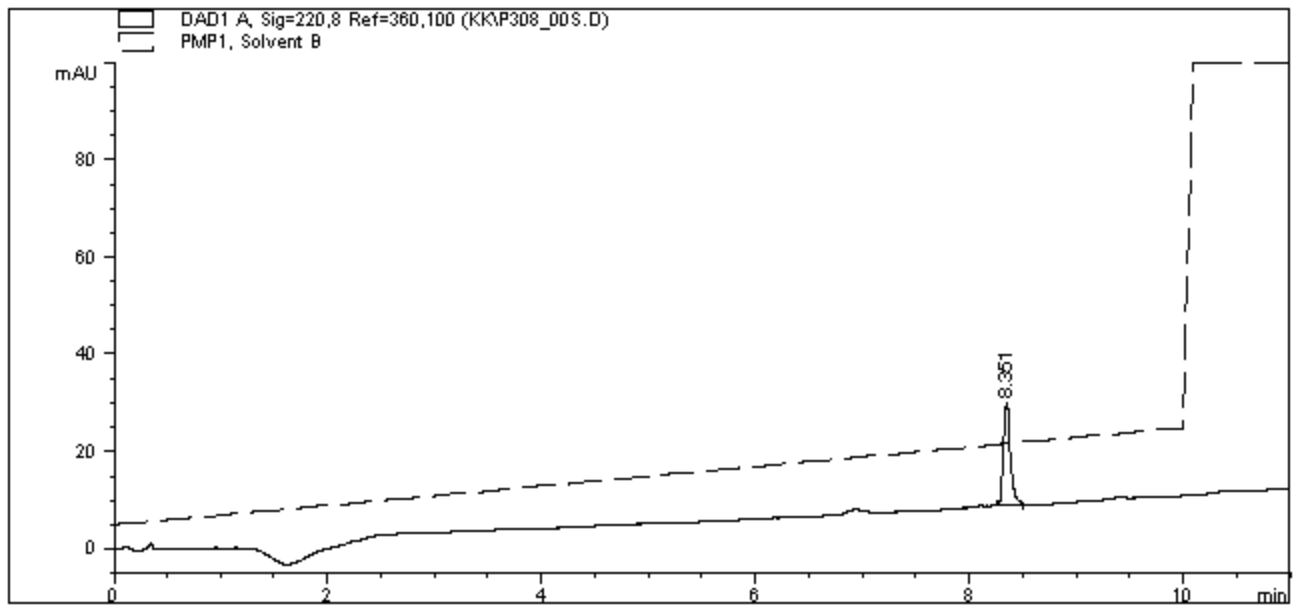


Chemical Formula: C₁₀₁H₁₈₀N₃₅O₃₃PS
 Exact Mass: 2474.29
 Molecular Weight: 2475.76

Applied Biosystems 4700 Proteomics Analyzer 7017

4700 Reflector Spec #1 MC[BP = 2476.3, 5562]





=====
 Area Percent Report
 =====

Sorted By : Signal
 Multiplier : 1.0000
 Dilution : 1.0000

Signal 1: DAD1 A, Sig=220,8 Ref=360,100

Peak #	RetTime [min]	Type	Width [min]	Area [mAU*s]	Height [mAU]	Area %
1	8.351	BB	0.0675	92.15787	20.86260	100.0000

Totals : 92.15787 20.86260

Results obtained with enhanced integrator!