

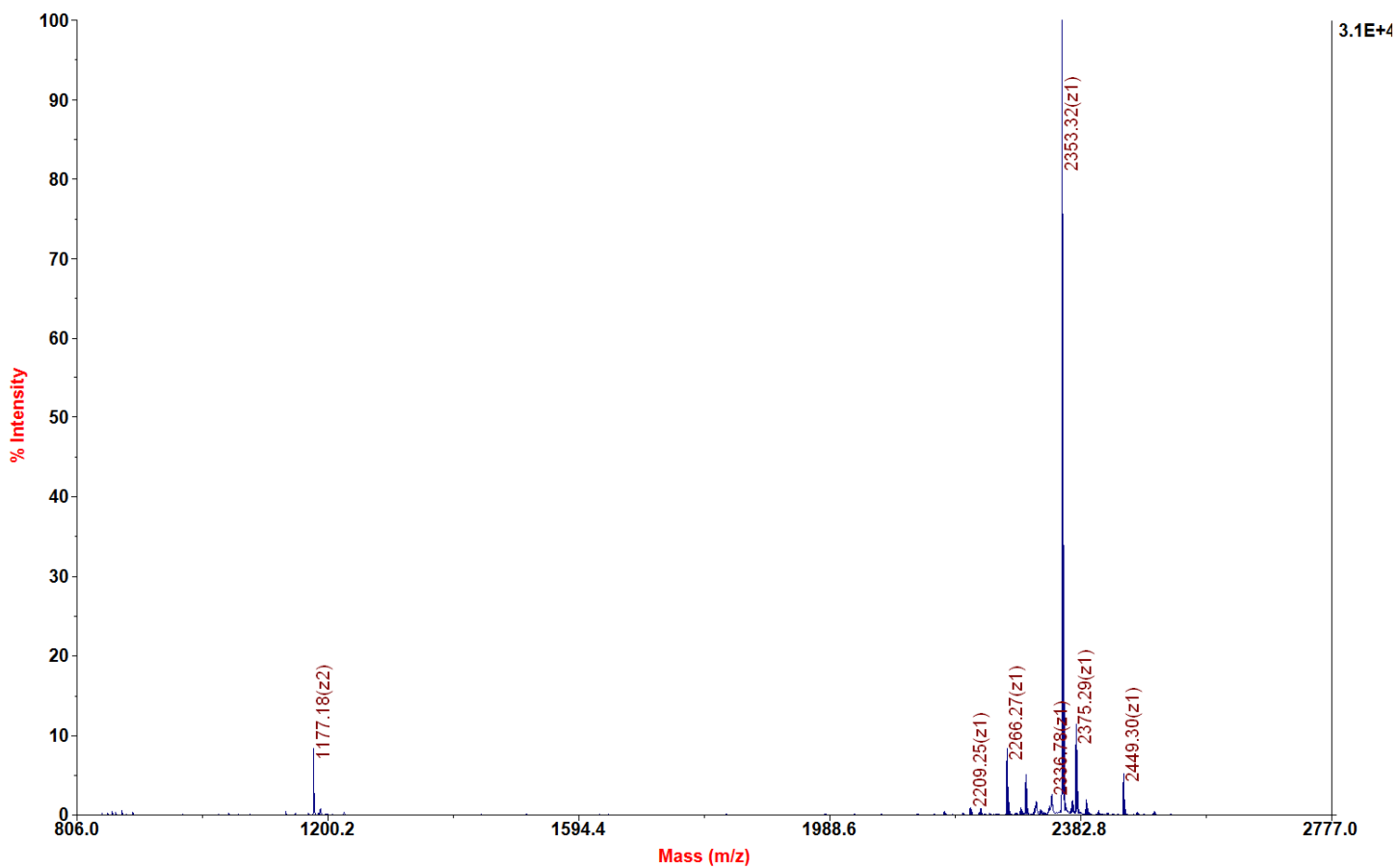
Chemical Formula:  $C_{99}H_{177}N_{35}O_{29}S$

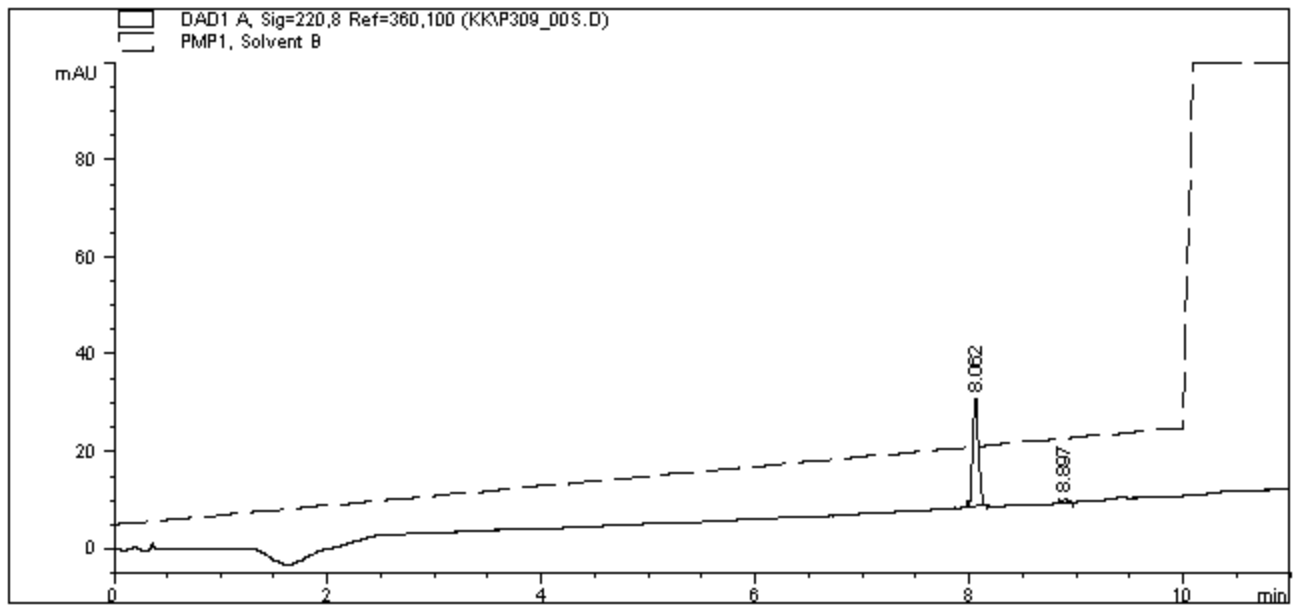
Exact Mass: 2352.32

Molecular Weight: 2353.75

Applied Biosystems 4700 Proteomics Analyzer 7017

4700 Reflector Spec #1 MC[BP = 2354.3, 30538]





=====  
 Area Percent Report  
 =====

Sorted By : Signal  
 Multiplier : 1.0000  
 Dilution : 1.0000

Signal 1: DAD1 A, Sig=220,8 Ref=360,100

Peak #	RetTime [min]	Type	Width [min]	Area [mAU*s]	Height [mAU]	Area %
1	8.062	BB	0.0587	83.22878	22.19541	97.2623
2	8.897	PB	0.0417	2.34266	6.79910e-1	2.7377

Totals : 85.57143 22.87532

Results obtained with enhanced integrator!