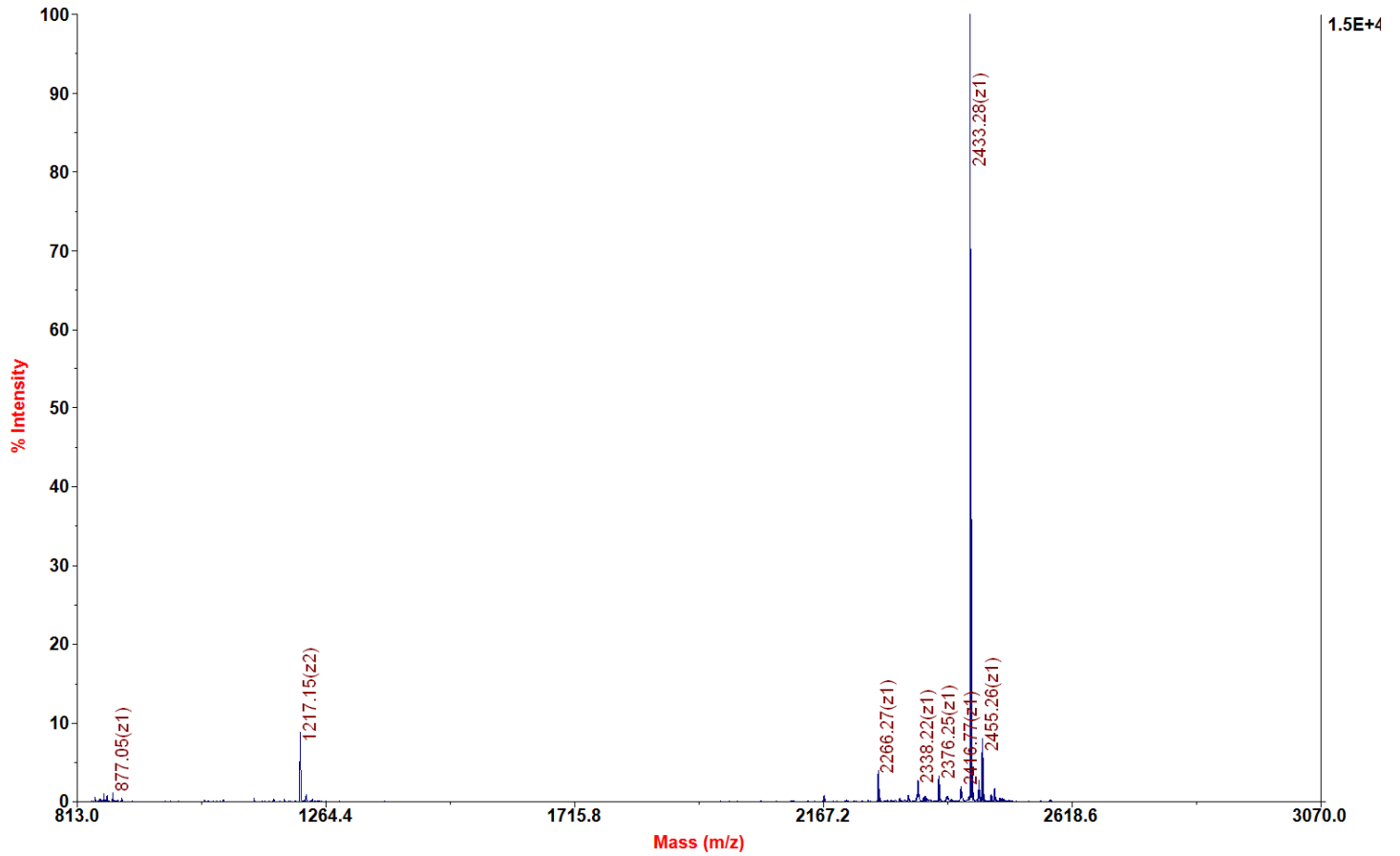
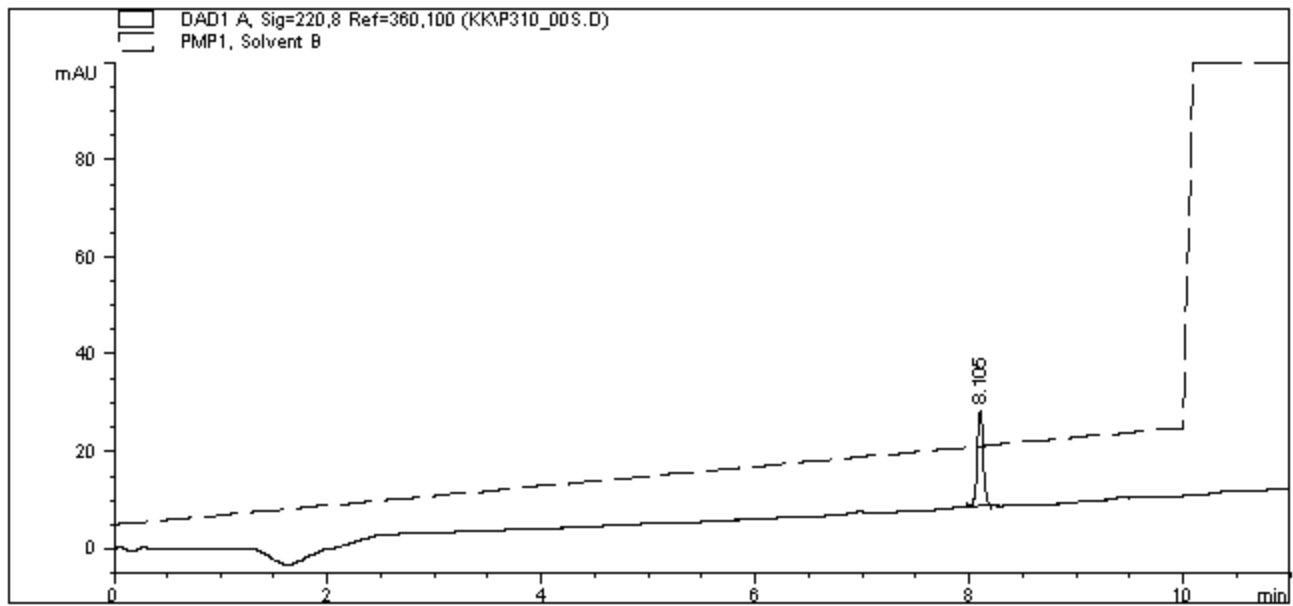


Chemical Formula: $C_{99}H_{178}N_{35}O_{32}PS$
 Exact Mass: 2432.28
 Molecular Weight: 2433.73

Applied Biosystems 4700 Proteomics Analyzer 7017

4700 Reflector Spec #1 MC[BP = 2434.3, 15298]





=====
 Area Percent Report
 =====

Sorted By : Signal
 Multiplier : 1.0000
 Dilution : 1.0000

Signal 1: DAD1 A, Sig=220,8 Ref=360,100

Peak #	RetTime [min]	Type	Width [min]	Area [mAU*s]	Height [mAU]	Area %
1	8.105	BB	0.0609	77.23307	19.63264	100.0000

Totals : 77.23307 19.63264

Results obtained with enhanced integrator!