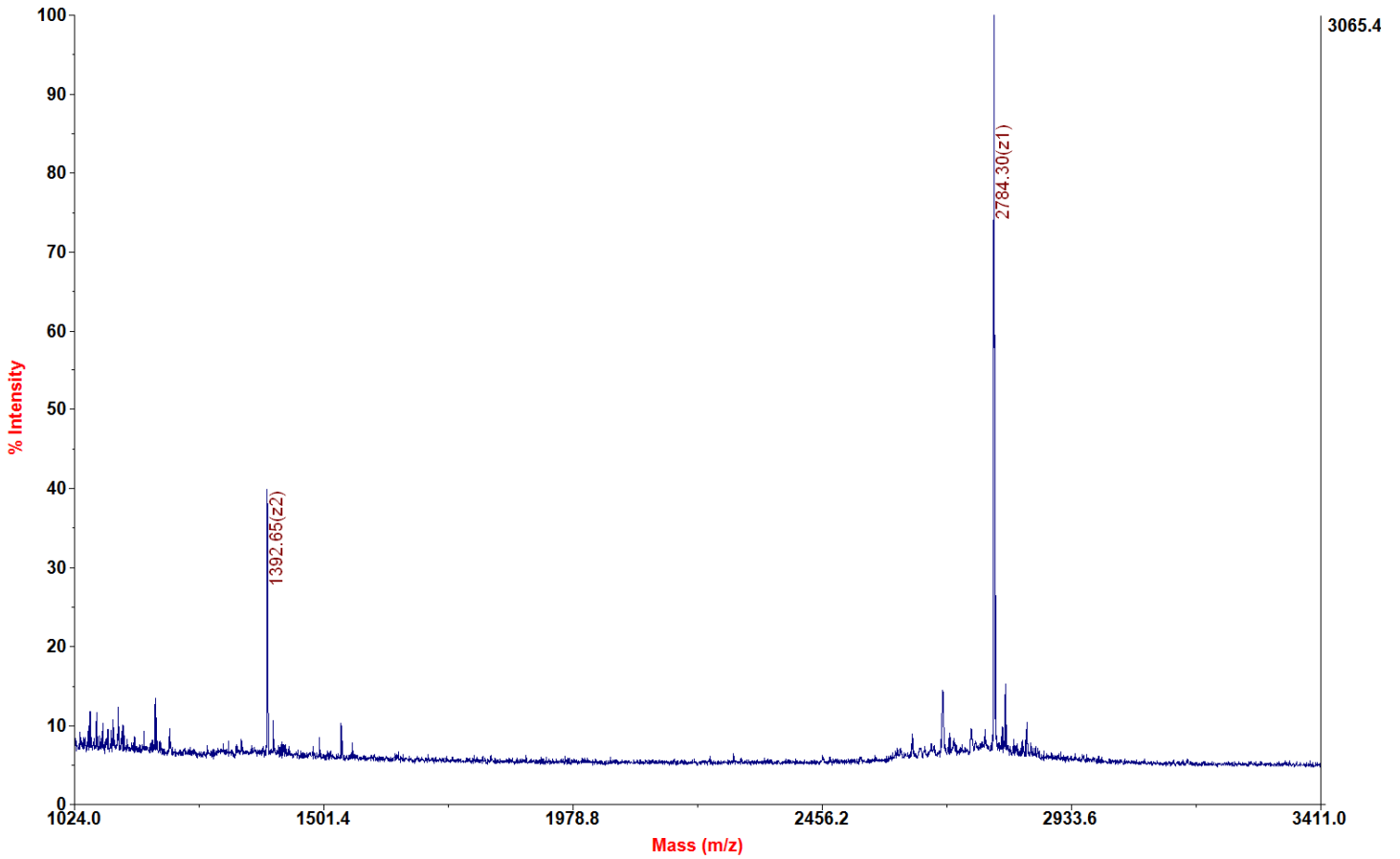
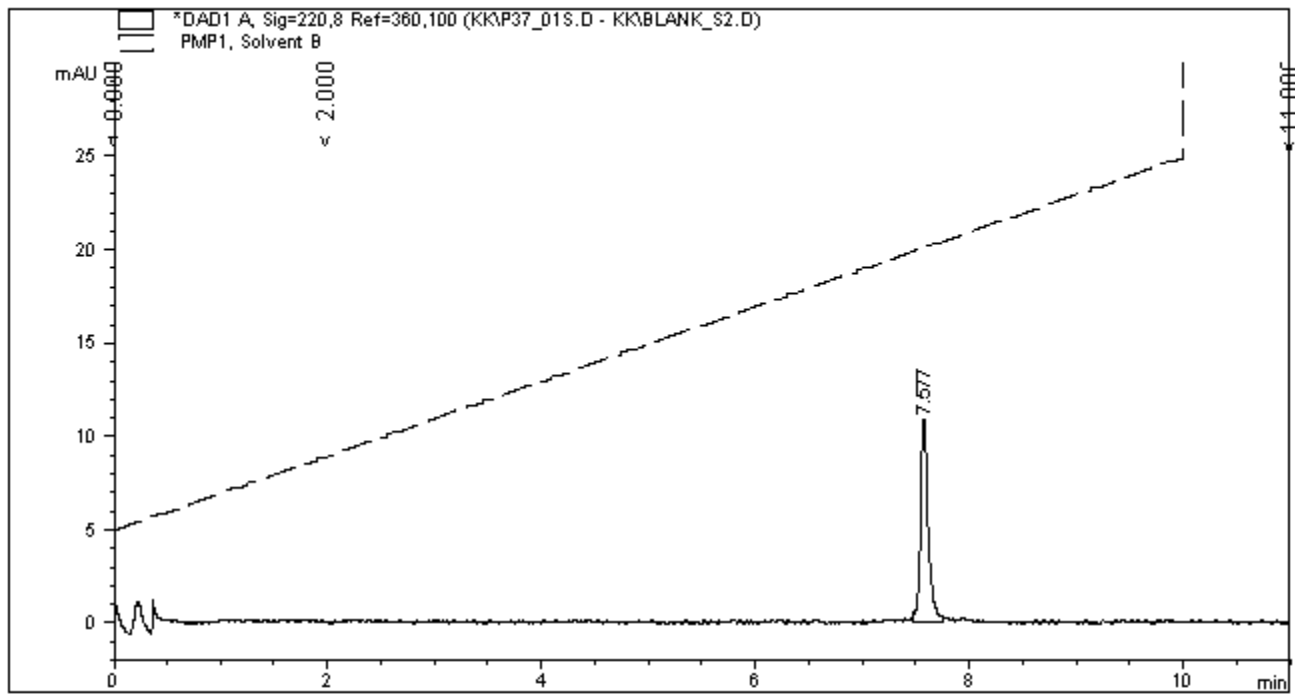


**Applied Biosystems 4700 Proteomics Analyzer 211**

**4700 Reflector Spec #1 MC[BP = 2785.3, 3065]**





=====  
Area Percent Report  
=====

Sorted By : Signal  
Multiplier : 1.0000  
Dilution : 1.0000

Signal 1: DAD1 A, Sig=220,8 Ref=360,100  
Signal has been modified after loading from rawdata file!

Peak #	RetTime [min]	Type	Width [min]	Area [mAU*s]	Height [mAU]	Area %
1	7.577	BB	0.0799	54.80733	10.67387	100.0000

Totals :                   54.80733   10.67387