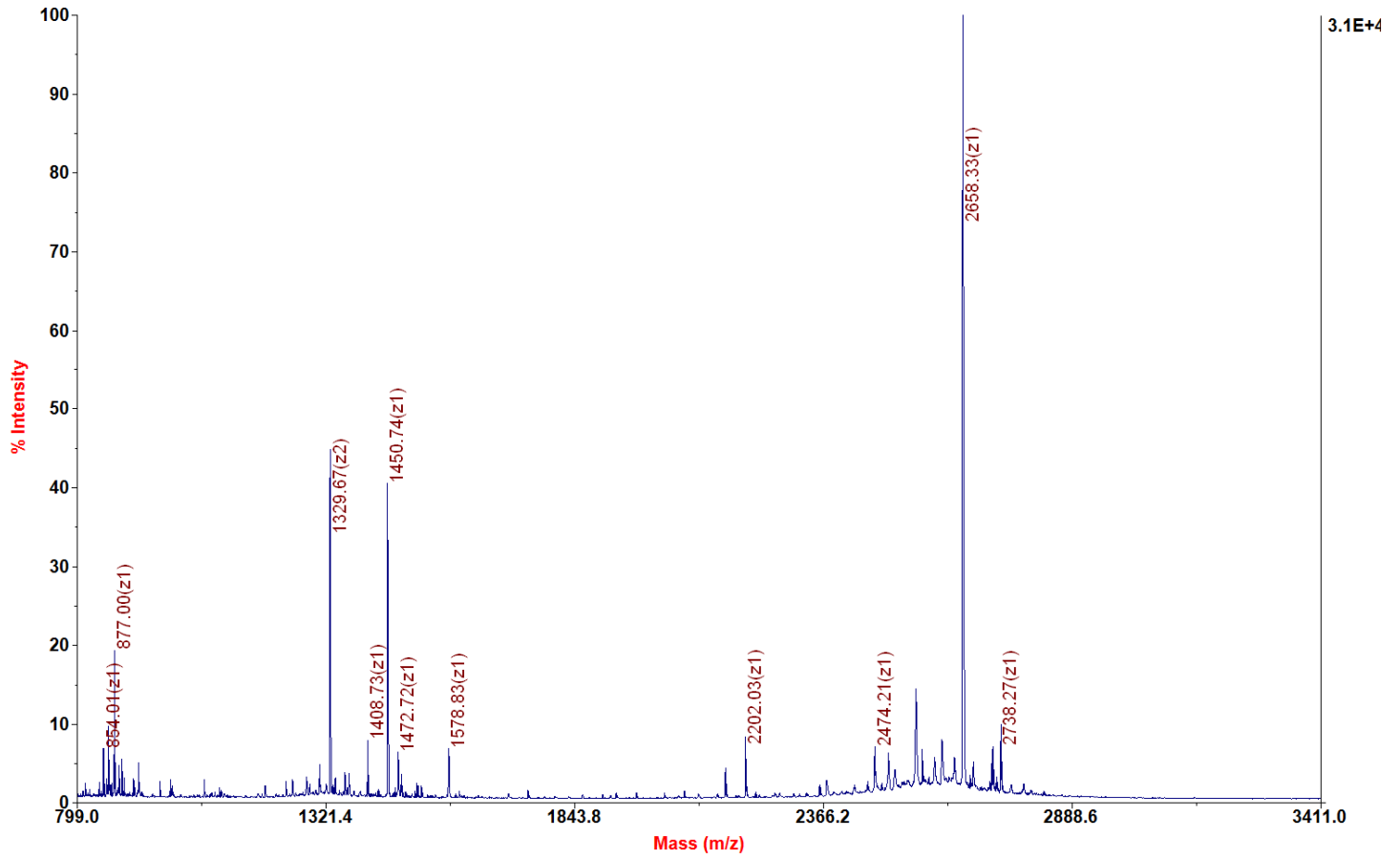
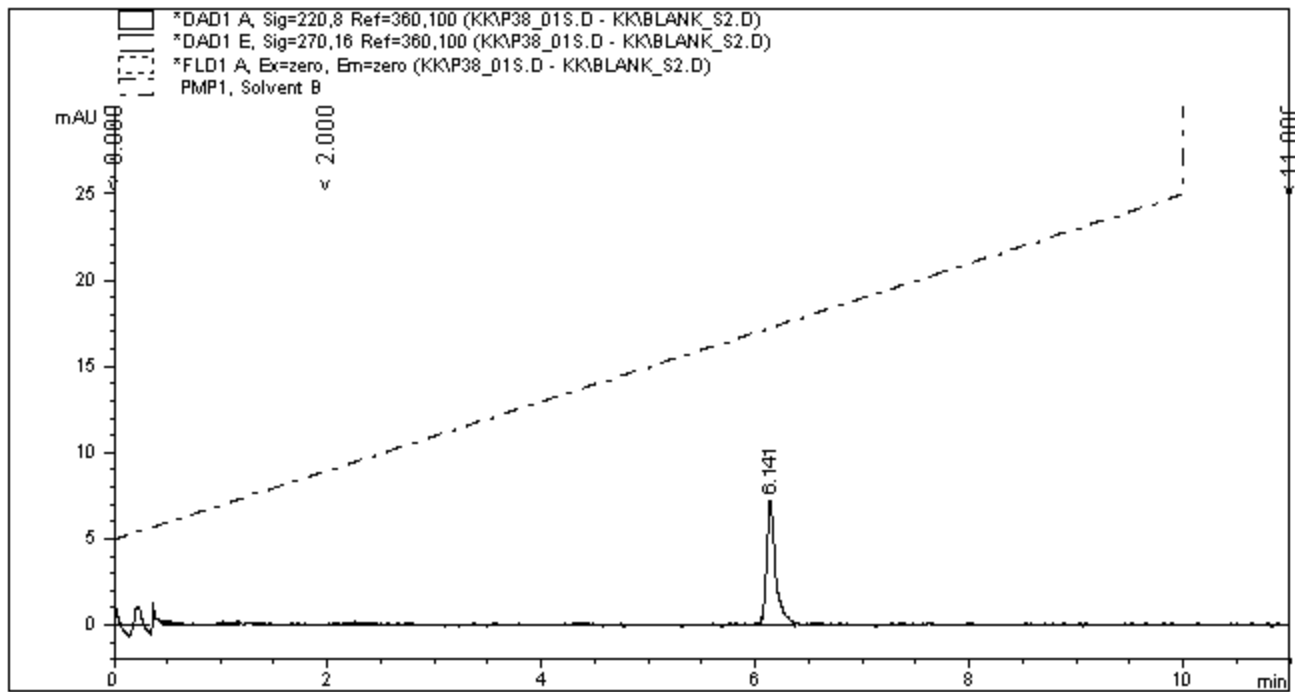


**Applied Biosystems 4700 Proteomics Analyzer 211**

**4700 Reflector Spec #1 MC[BP = 2659.3, 30623]**





=====  
 Area Percent Report  
 =====

Sorted By : Signal  
 Multiplier : 1.0000  
 Dilution : 1.0000

Signal 1: DAD1 A, Sig=220,8 Ref=360,100  
 Signal has been modified after loading from rawdata file!

Peak #	RetTime [min]	Type	Width [min]	Area [mAU*s]	Height [mAU]	Area %
1	6.141	BB	0.0882	41.64654	7.12189	100.0000

Totals :                      41.64654      7.12189