

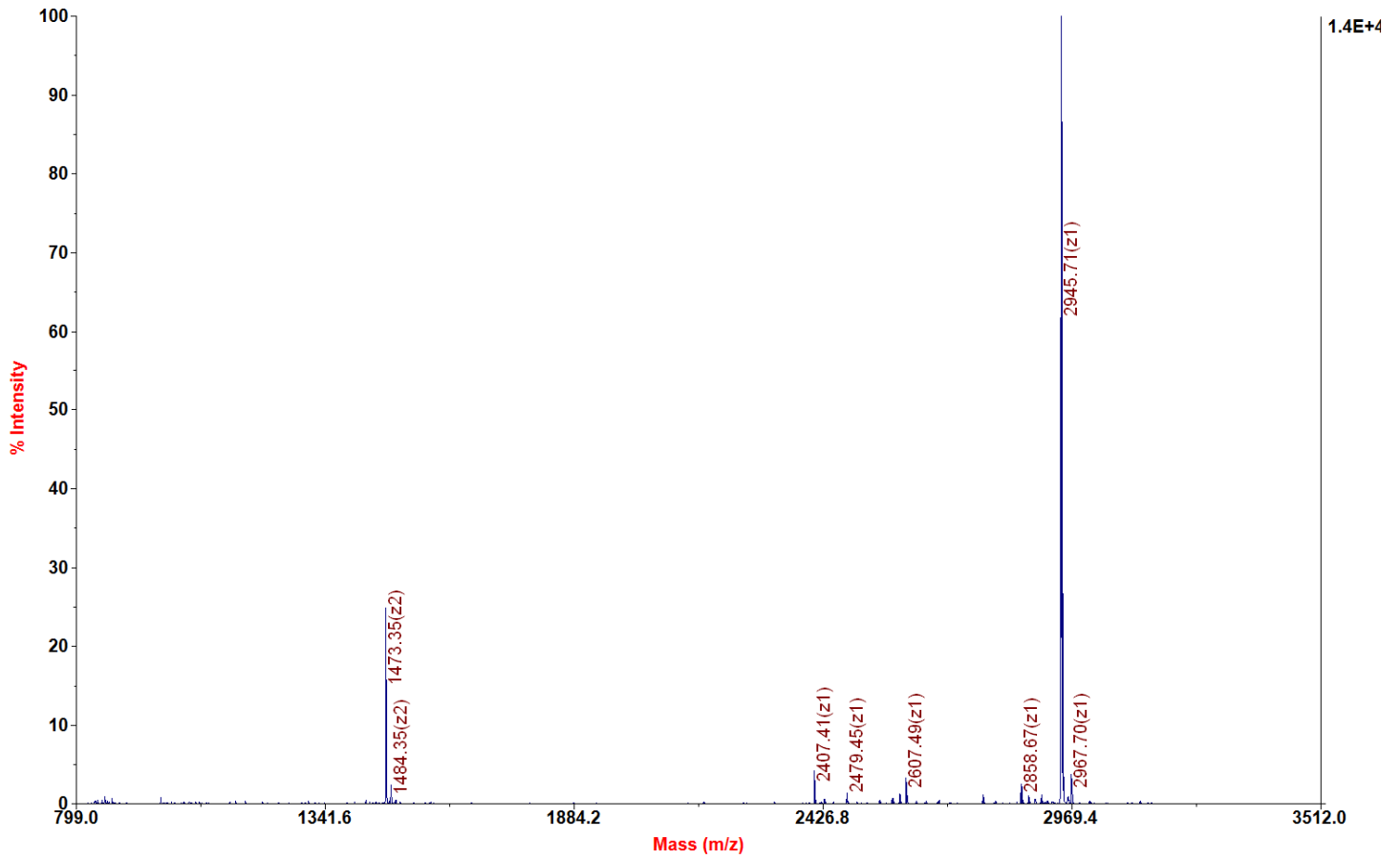
Chemical Formula: $C_{133}H_{238}N_{37}O_{35}S^+$

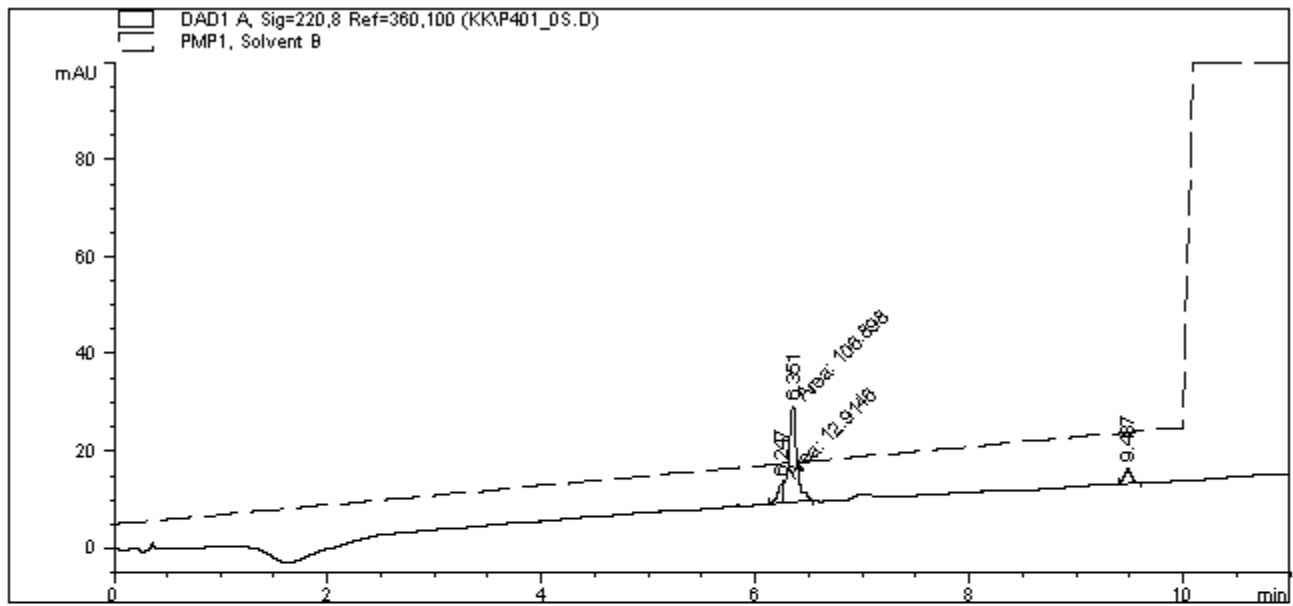
Exact Mass: 2945.77

Molecular Weight: 2947.60

Applied Biosystems 4700 Proteomics Analyzer 7017

4700 Reflector Spec #1 MC[BP = 2946.7, 14480]





=====
 Area Percent Report
 =====

Sorted By : Signal
 Multiplier : 1.0000
 Dilution : 1.0000

Signal 1: DAD1 A, Sig=220,8 Ref=360,100

Peak #	RetTime [min]	Type	Width [min]	Area [mAU*s]	Height [mAU]	Area %
1	6.247	MF	0.0541	12.91460	3.98110	9.6713
2	6.351	FM	0.0903	106.89787	19.73033	80.0522
3	9.487	BB	0.0579	13.72281	2.94455	10.2765

Totals : 133.53528 26.65598

Results obtained with enhanced integrator!