

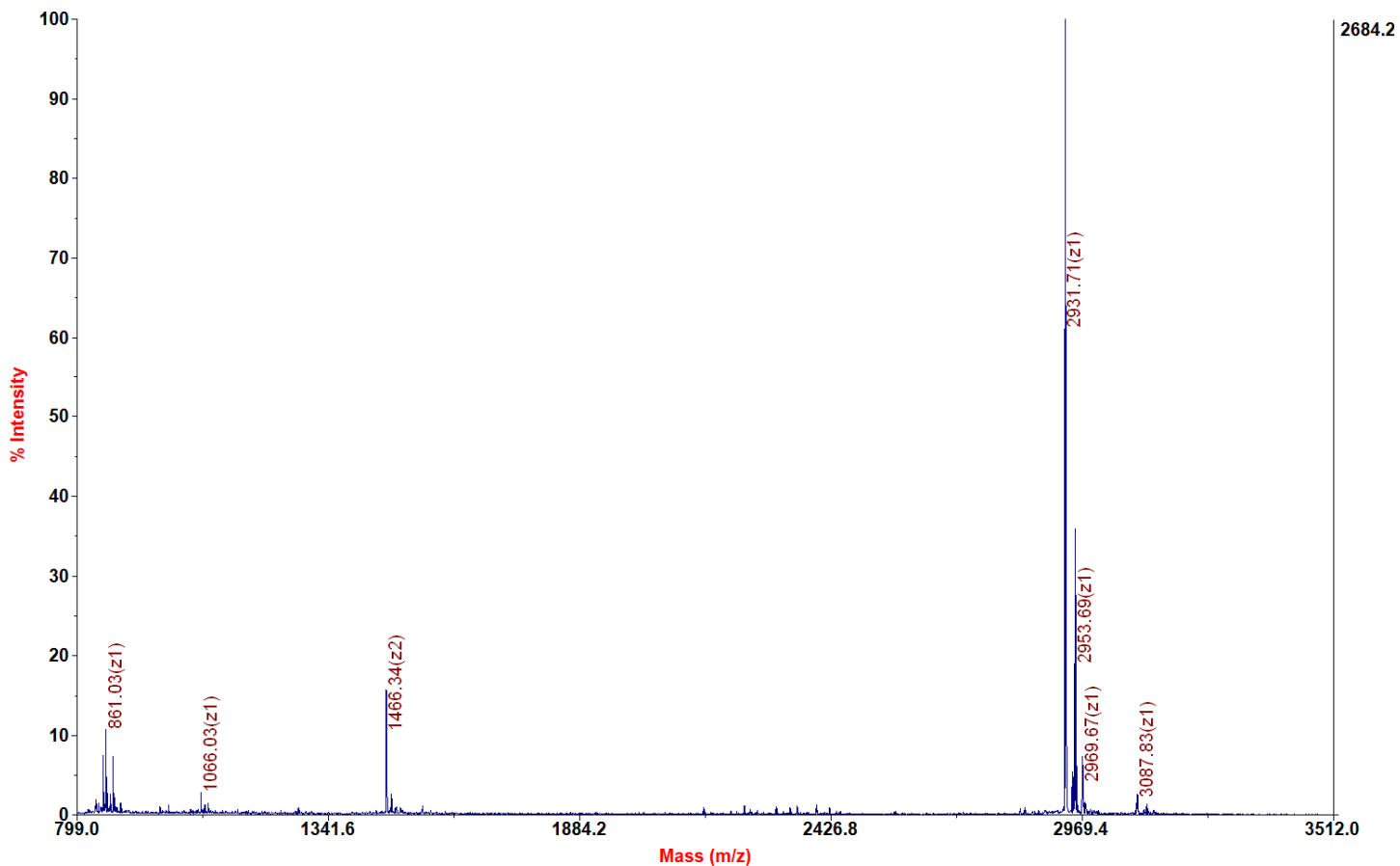
Chemical Formula: C₁₃₂H₂₃₅N₃₇O₃₅S

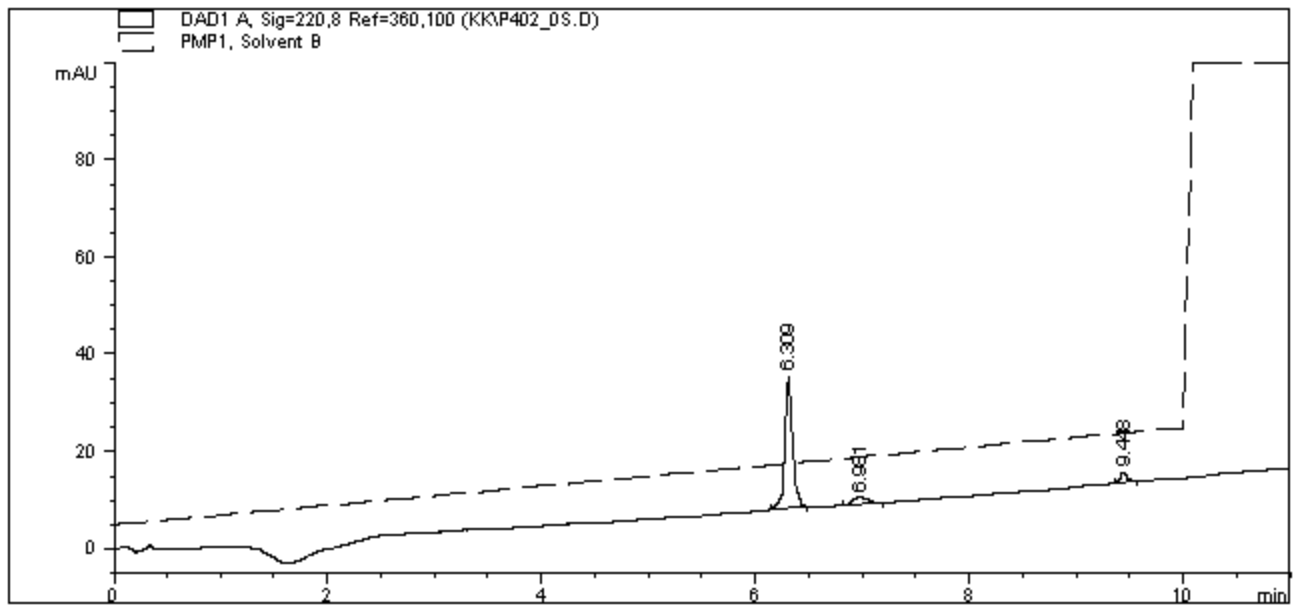
Exact Mass: 2930.75

Molecular Weight: 2932.57

Applied Biosystems 4700 Proteomics Analyzer 7017

4700 Reflector Spec #1 MC[BP = 2932.7, 2684]





=====
 Area Percent Report
 =====

Sorted By : Signal
 Multiplier : 1.0000
 Dilution : 1.0000

Signal 1: DAD1 A, Sig=220,8 Ref=360,100

Peak #	RetTime [min]	Type	Width [min]	Area [mAU*s]	Height [mAU]	Area %
1	6.309	BB	0.0758	137.02812	26.94677	85.7860
2	6.981	BB	0.1231	13.64864	1.30925	8.5447
3	9.448	BB	0.0572	9.05576	1.89707	5.6693

Totals : 159.73252 30.15310