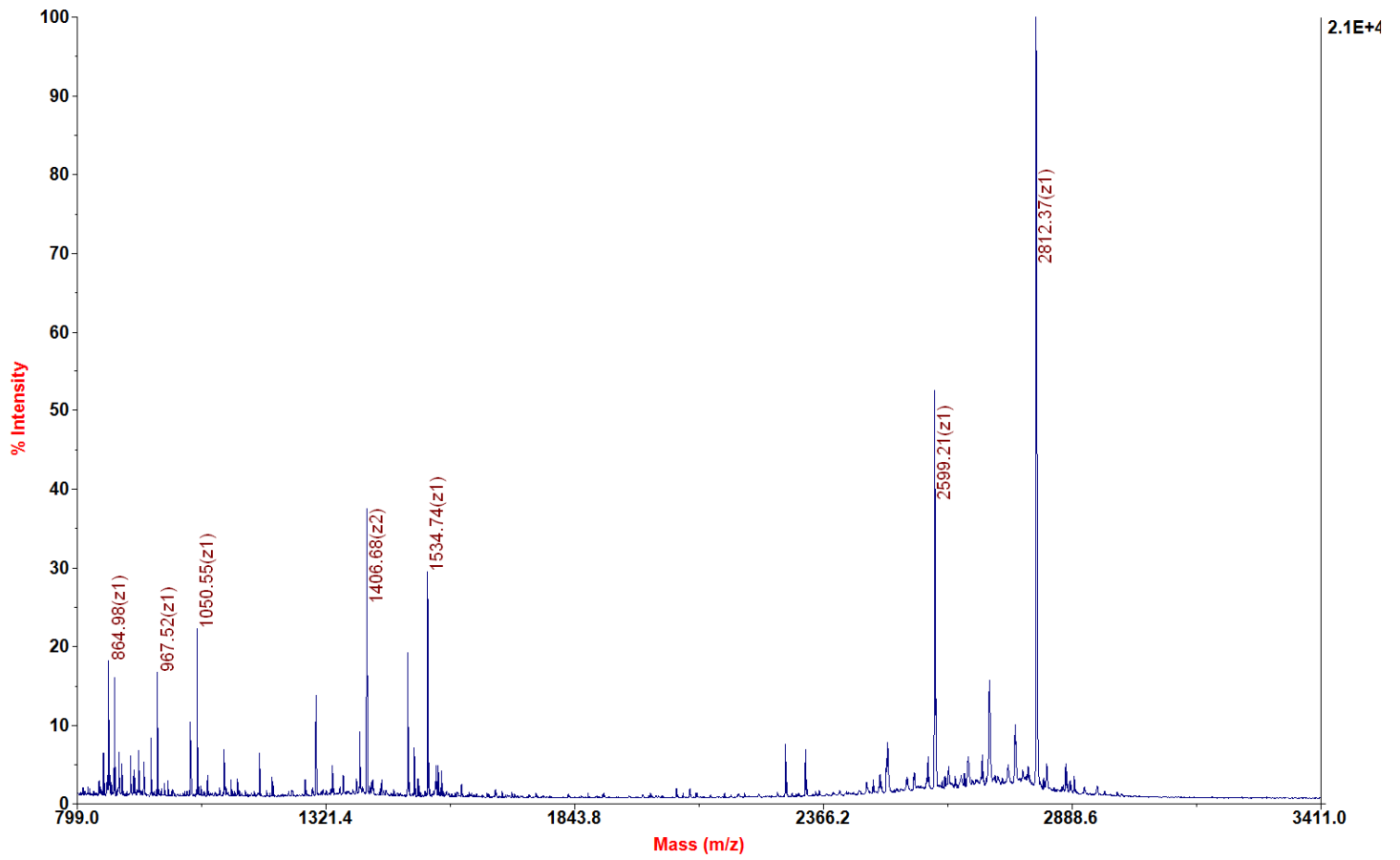


**Applied Biosystems 4700 Proteomics Analyzer 211**

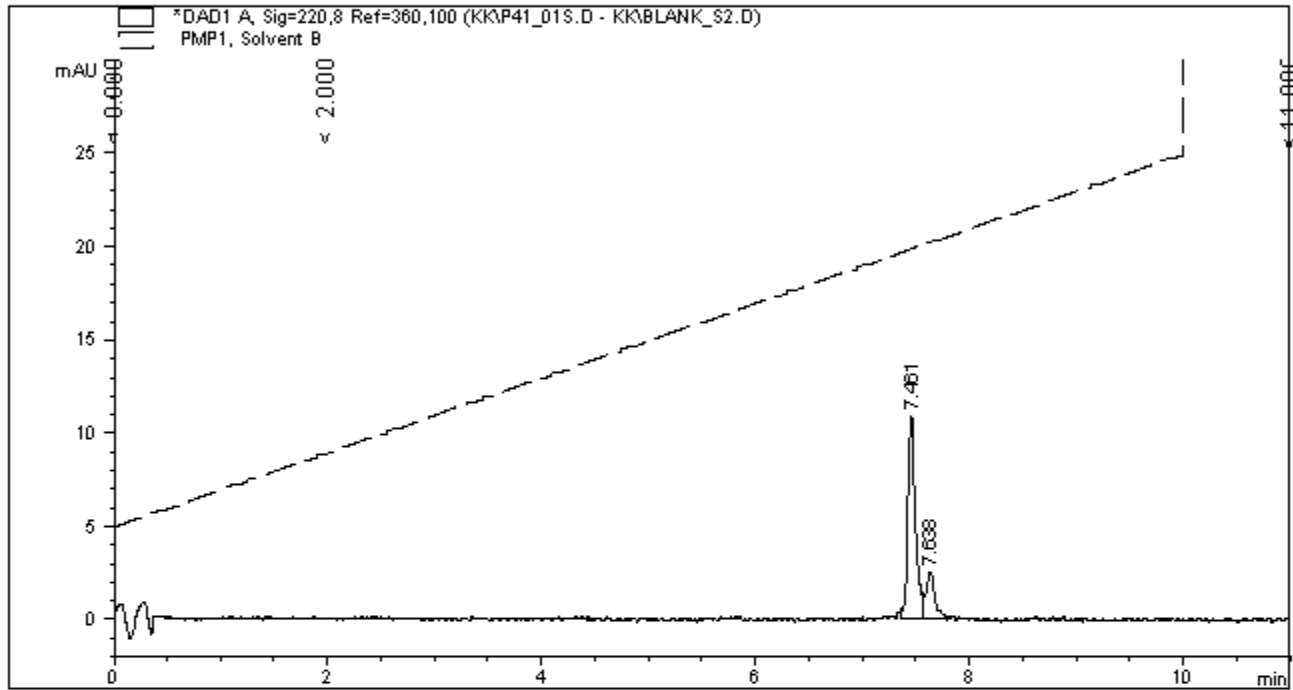
**4700 Reflector Spec #1 MC[BP = 2813.4, 20588]**



```

=====
Injection Date : 3/17/2009 6:20:06 PM      Seq. Line : 10
Sample Name    : P41A I                    Location  : Vial 41
Acq. Operator  : KK                       Inj      : 1
                                                Inj Volume : 1 µl
                                                Actual Inj Volume : 5 µl
Different Inj Volume from Sequence !
Acq. Method    : C:\HPCHEM\1\DATA\KK\S5 25 10.M
Last changed   : 2/17/2009 12:15:40 PM by KK
Analysis Method : C:\HPCHEM\1\DATA\KK\S5 25 10.M
Last changed   : 3/18/2009 8:38:12 AM by KK
                (modified after loading)
5-25% B/ 10min 2ml/min Waters Symmetry C18 3.5µm 50x4.6mm

```



```

=====
                          Area Percent Report
=====

```

```

Sorted By      :      Signal
Multiplier     :      1.0000
Dilution       :      1.0000

```

```

Signal 1: DAD1 A, Sig=220,8 Ref=360,100
Signal has been modified after loading from rawdata file!

```

Peak #	RetTime [min]	Type	Width [min]	Area [mAU*s]	Height [mAU]	Area %
1	7.461	BV	0.0746	54.32270	10.81722	78.5811
2	7.638	VB	0.0899	14.80678	2.47107	21.4189

```
Totals :                      69.12948  13.28828
```

```
Results obtained with enhanced integrator!
```

```
*** End of Report ***
```