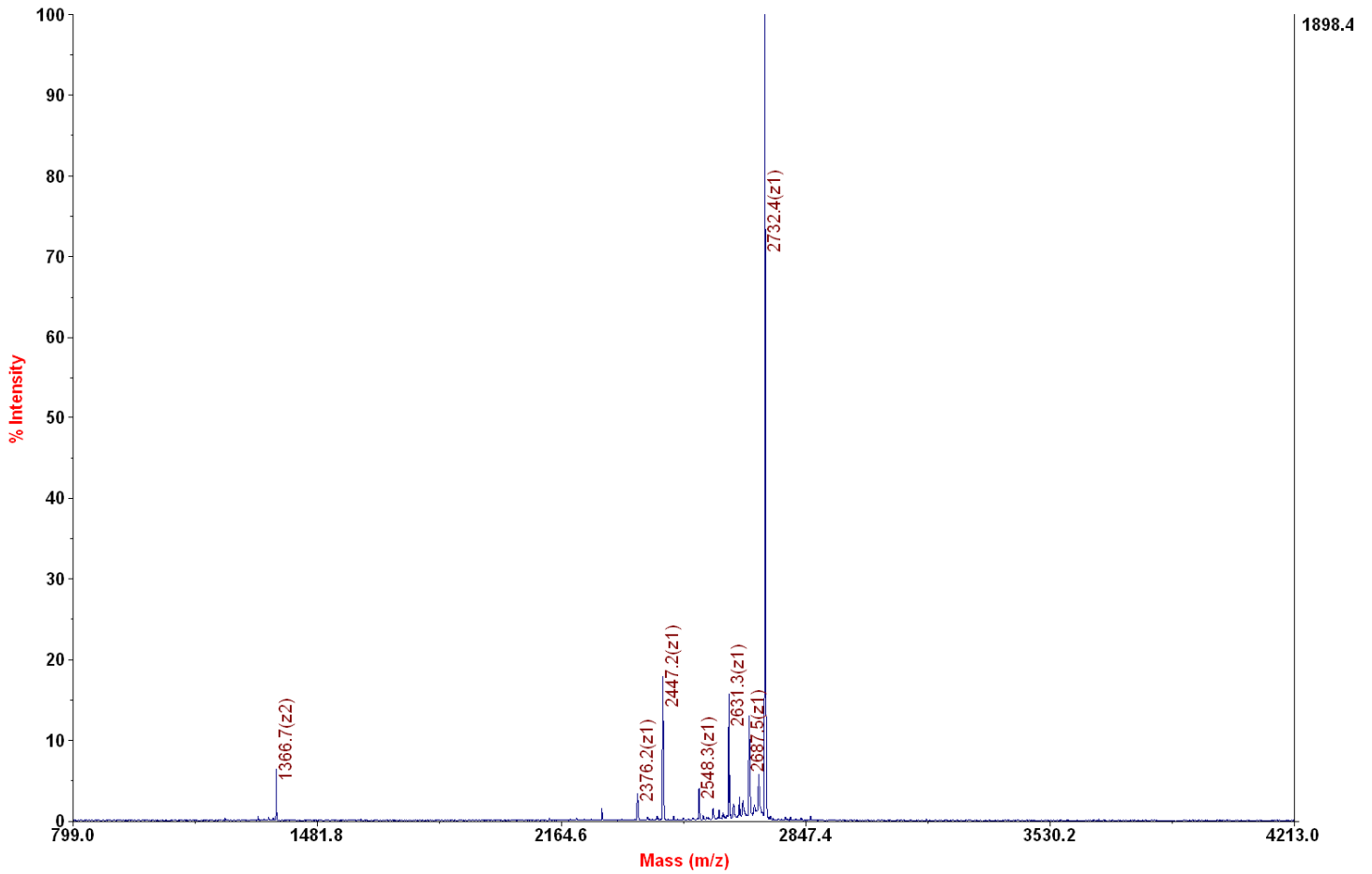


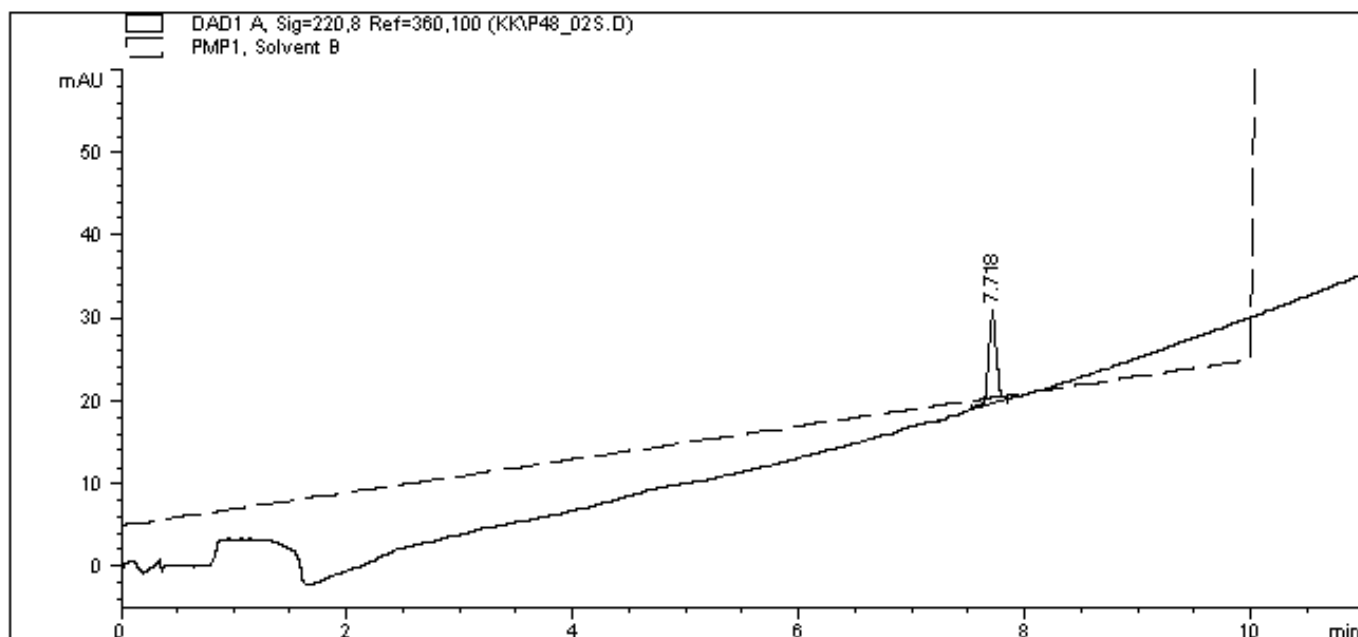
Chemical Formula: C₁₁₇H₂₀₆N₄₀O₃₃S

Exact Mass: 2731.54

Molecular Weight: 2733.20

4700 Reflector Spec #1 MC[BP = 2733.4, 1898]





=====
 Area Percent Report
 =====

Sorted By : Signal
 Multiplier : 1.0000
 Dilution : 1.0000

Signal 1: DAD1 A, Sig=220,8 Ref=360,100

Peak #	RetTime [min]	Type	Width [min]	Area [mAU*s]	Height [mAU]	Area %
1	7.718	BP	0.0721	52.72676	11.07075	100.0000

Totals : 52.72676 11.07075