

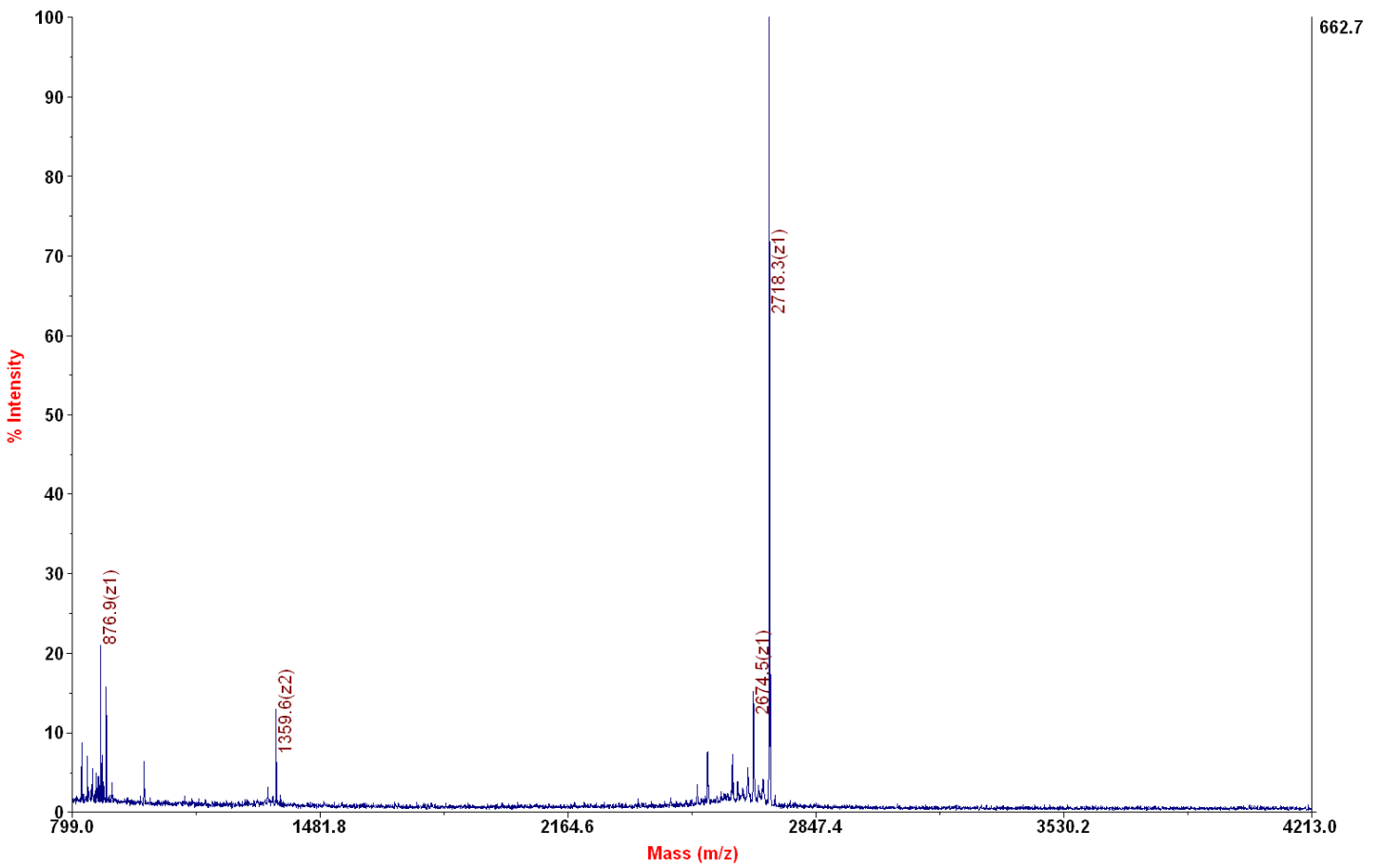
Chemical Formula: $C_{117}H_{209}N_{40}O_{32}S^+$

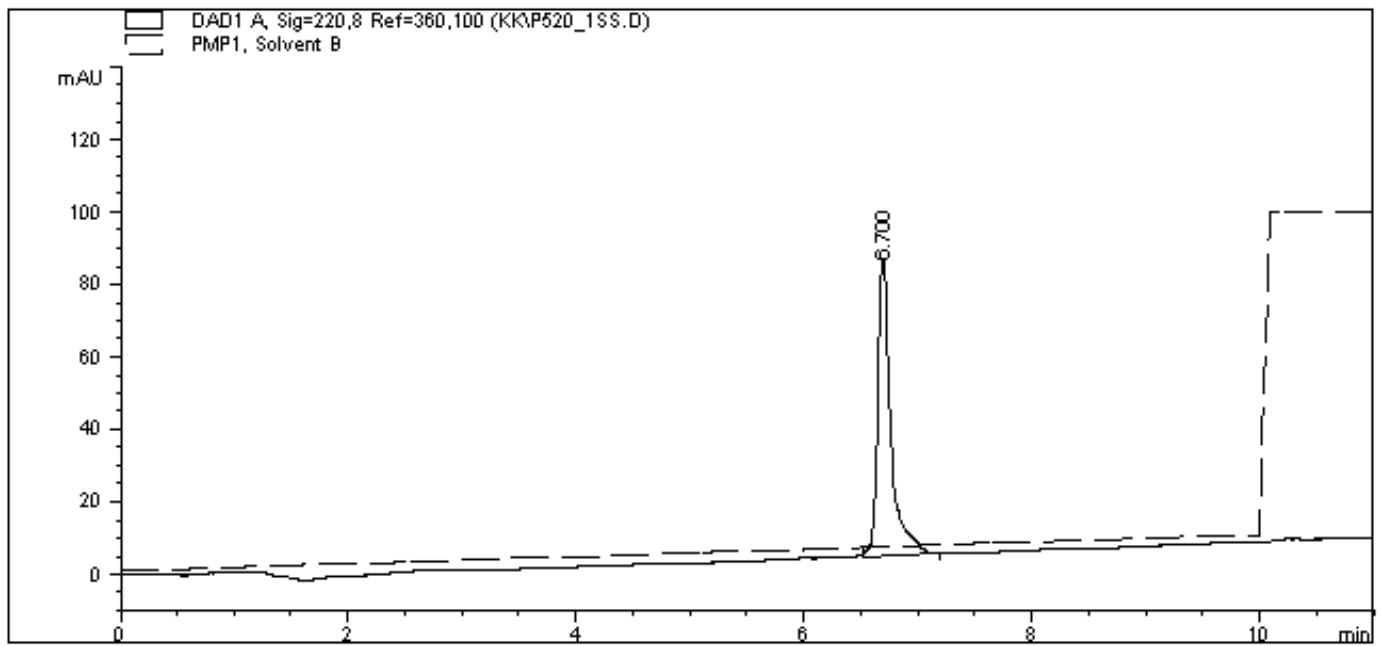
Exact Mass: 2718.57

Molecular Weight: 2720.22

Applied Biosystems 4700 Proteomics Analyzer 211

4700 Reflector Spec #1 MC[BP = 2719.3, 663]





=====
 Area Percent Report
 =====

Sorted By : Signal
 Multiplier : 1.0000
 Dilution : 1.0000

Signal 1: DAD1 A, Sig=220,8 Ref=360,100

Peak #	RetTime [min]	Type	Width [min]	Area [mAU*s]	Height [mAU]	Area %
1	6.700	BB	0.1281	655.19476	79.56456	100.0000
Totals :				655.19476	79.56456	