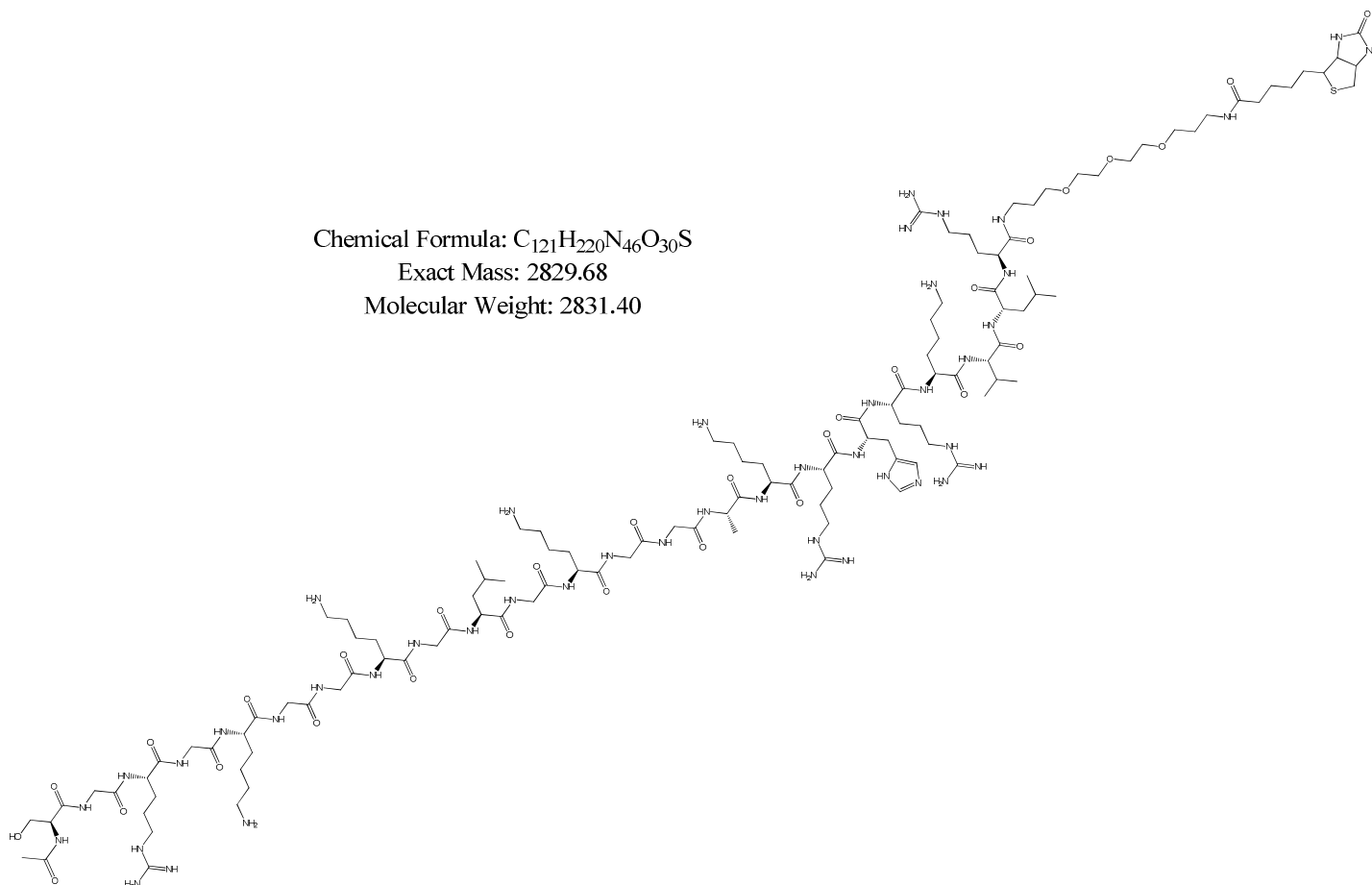


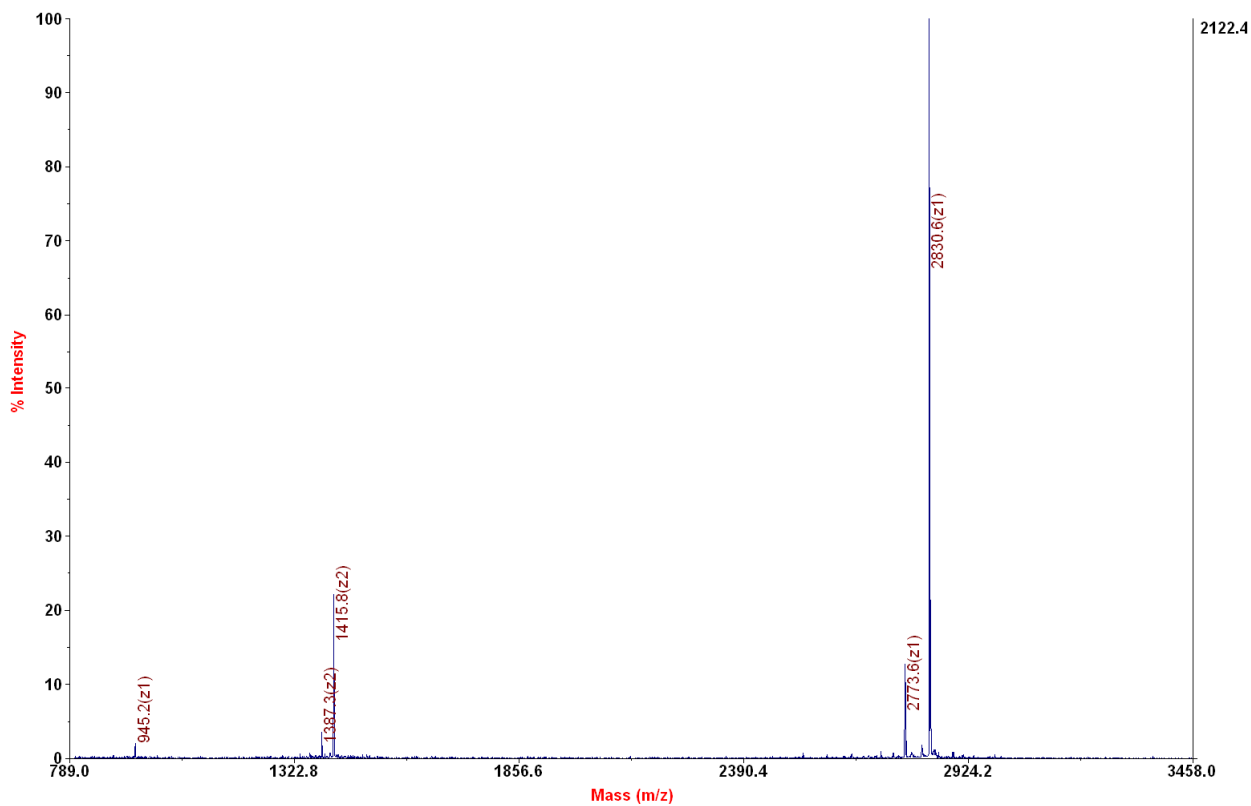
Chemical Formula: C₁₂₁H₂₂₀N₄₆O₃₀S

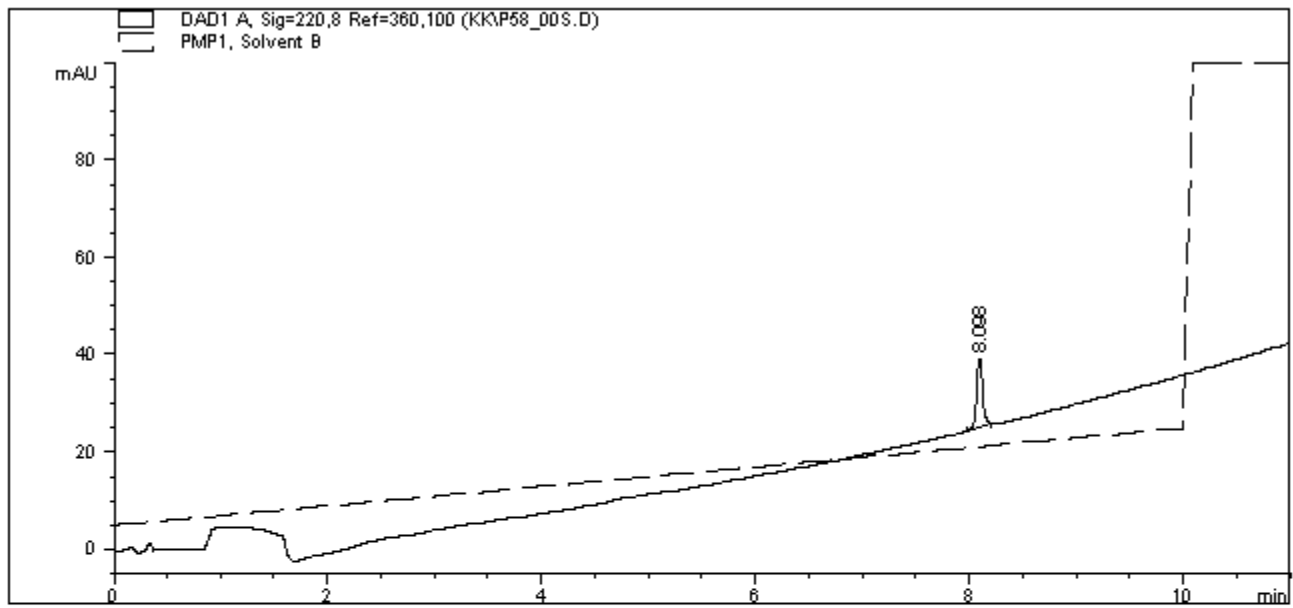
Exact Mass: 2829.68

Molecular Weight: 2831.40



4700 Reflector Spec #1 MC[BP = 2831.6, 2122]





=====
 Area Percent Report
 =====

Sorted By : Signal
 Multiplier : 1.0000
 Dilution : 1.0000

Signal 1: DAD1 A, Sig=220,8 Ref=360,100

Peak #	RetTime [min]	Type	Width [min]	Area [mAU*s]	Height [mAU]	Area %
1	8.098	BB	0.0602	55.48503	14.00229	100.0000

Totals : 55.48503 14.00229