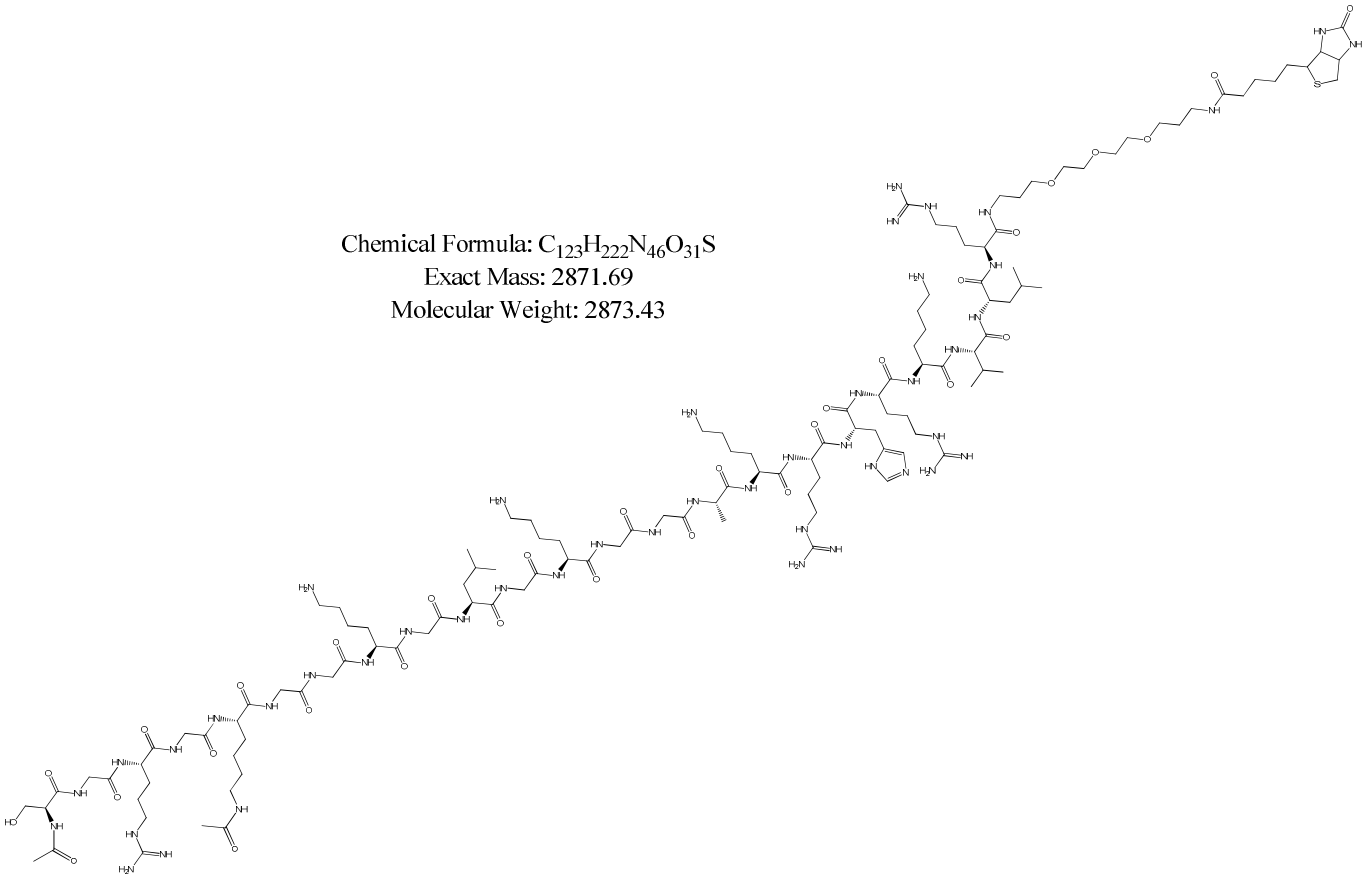
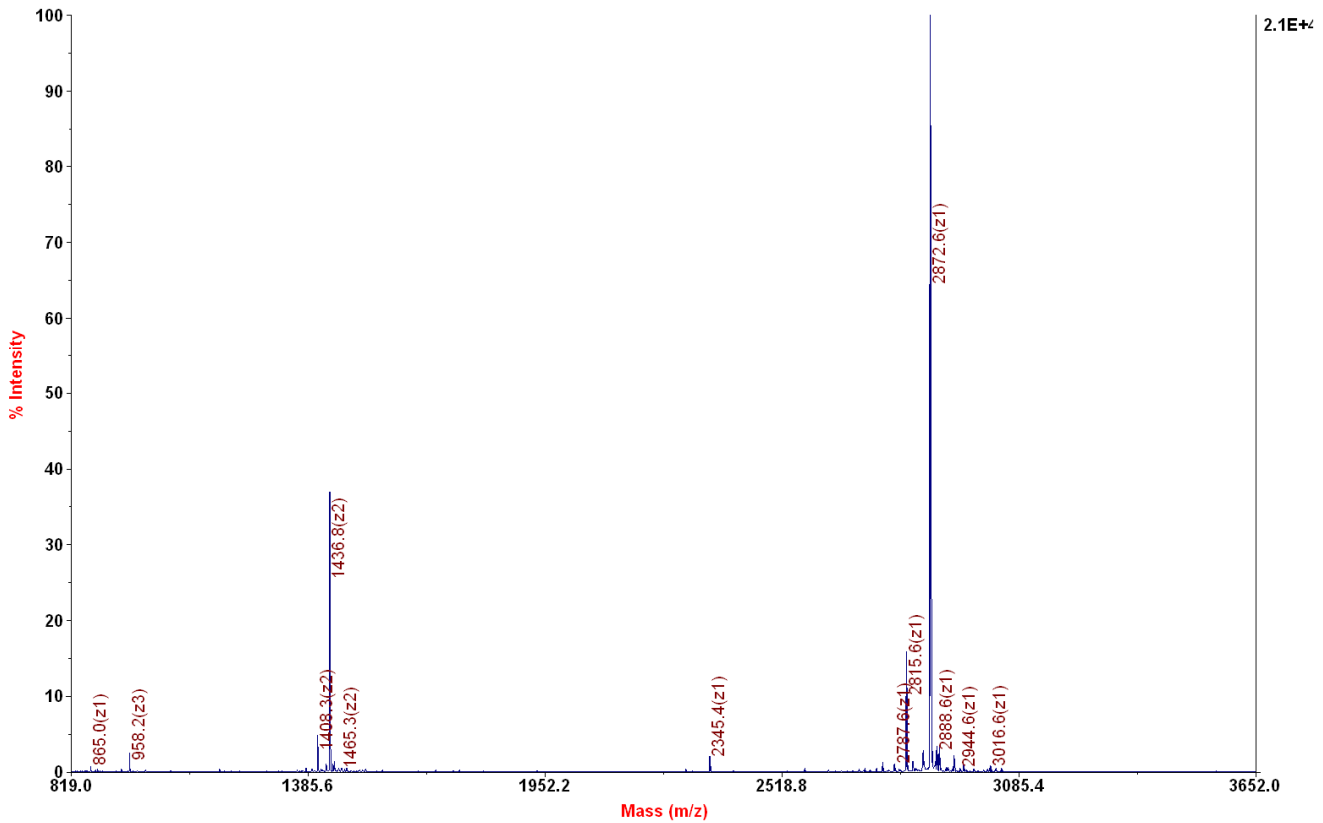


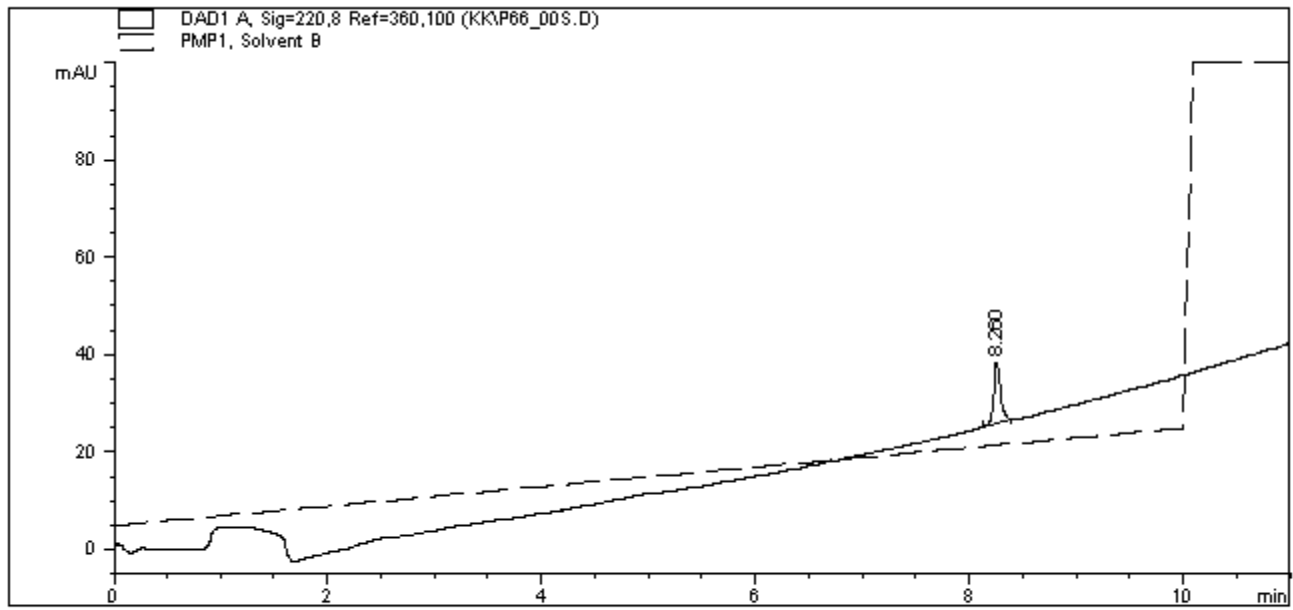
Chemical Formula: C₁₂₃H₂₂₂N₄₆O₃₁S
Exact Mass: 2871.69
Molecular Weight: 2873.43



Applied Biosystems 4700 Proteomics Analyzer 211

4700 Reflector Spec #1 MC[BP = 2873.6, 21107]





=====
 Area Percent Report
 =====

Sorted By : Signal
 Multiplier : 1.0000
 Dilution : 1.0000

Signal 1: DAD1 A, Sig=220,8 Ref=360,100

Peak #	RetTime [min]	Type	Width [min]	Area [mAU*s]	Height [mAU]	Area %
1	8.260	BB	0.0652	54.15110	12.33606	100.0000

Totals : 54.15110 12.33606