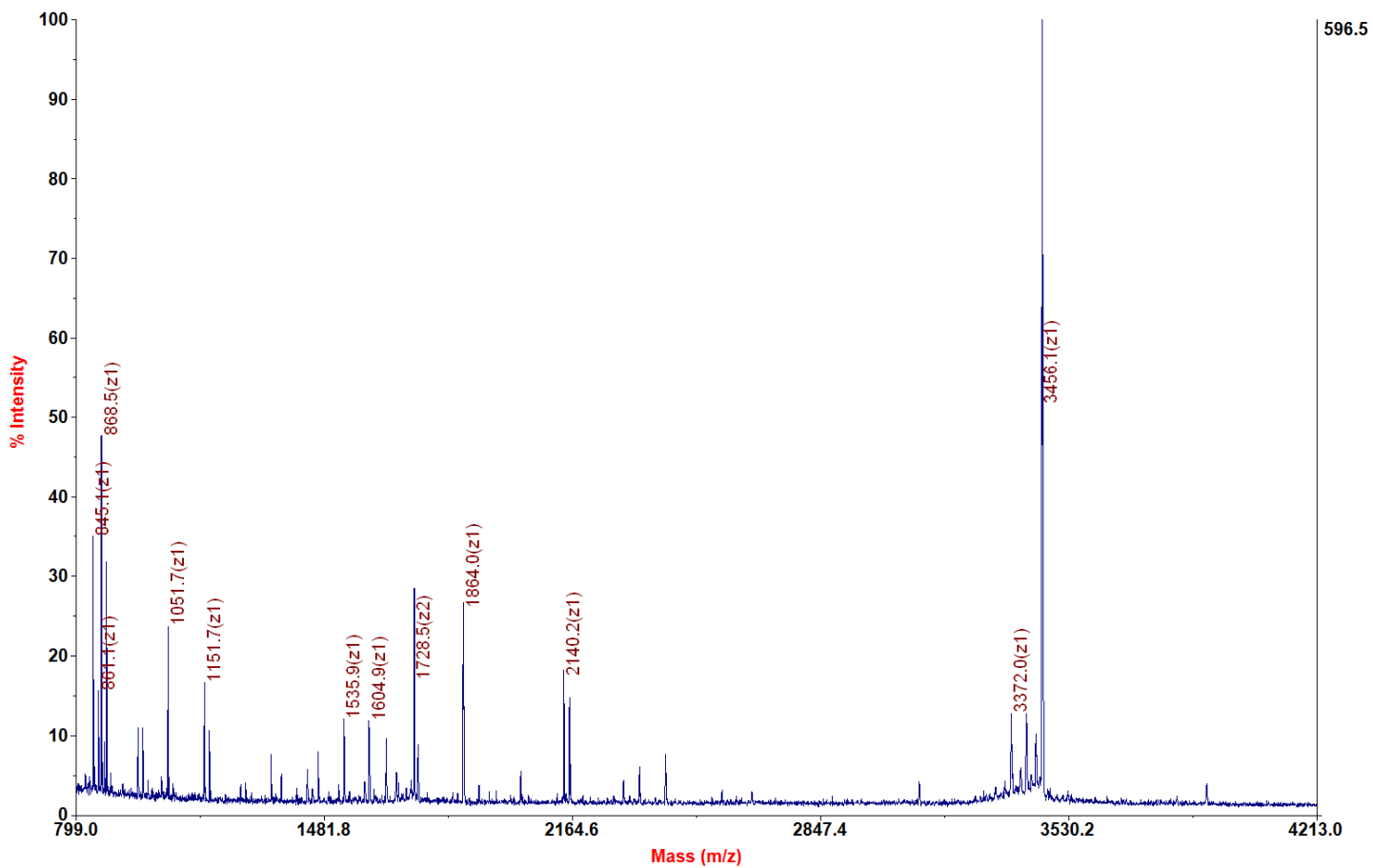
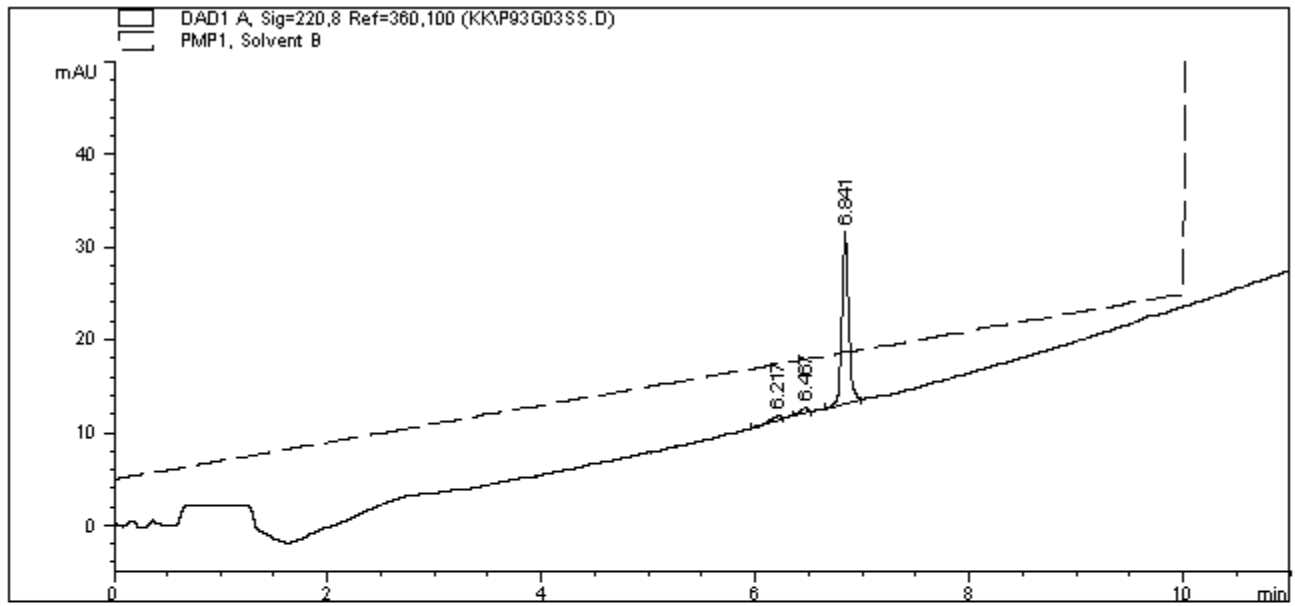


**Applied Biosystems 4700 Proteomics Analyzer 211**

**4700 Reflector Spec #1 MC[BP = 3458.1, 596]**





=====  
 Area Percent Report  
 =====

Sorted By : Signal  
 Multiplier : 1.0000  
 Dilution : 1.0000

Signal 1: DAD1 A, Sig=220,8 Ref=360,100

Peak #	RetTime [min]	Type	Width [min]	Area [mAU*s]	Height [mAU]	Area %
1	6.217	BV	0.0875	3.41972	4.64133e-1	3.8941
2	6.467	BV	0.0627	2.77157	5.37339e-1	3.1561
3	6.841	BB	0.0665	81.62609	18.48267	92.9498

Totals :                      87.81738    19.48414