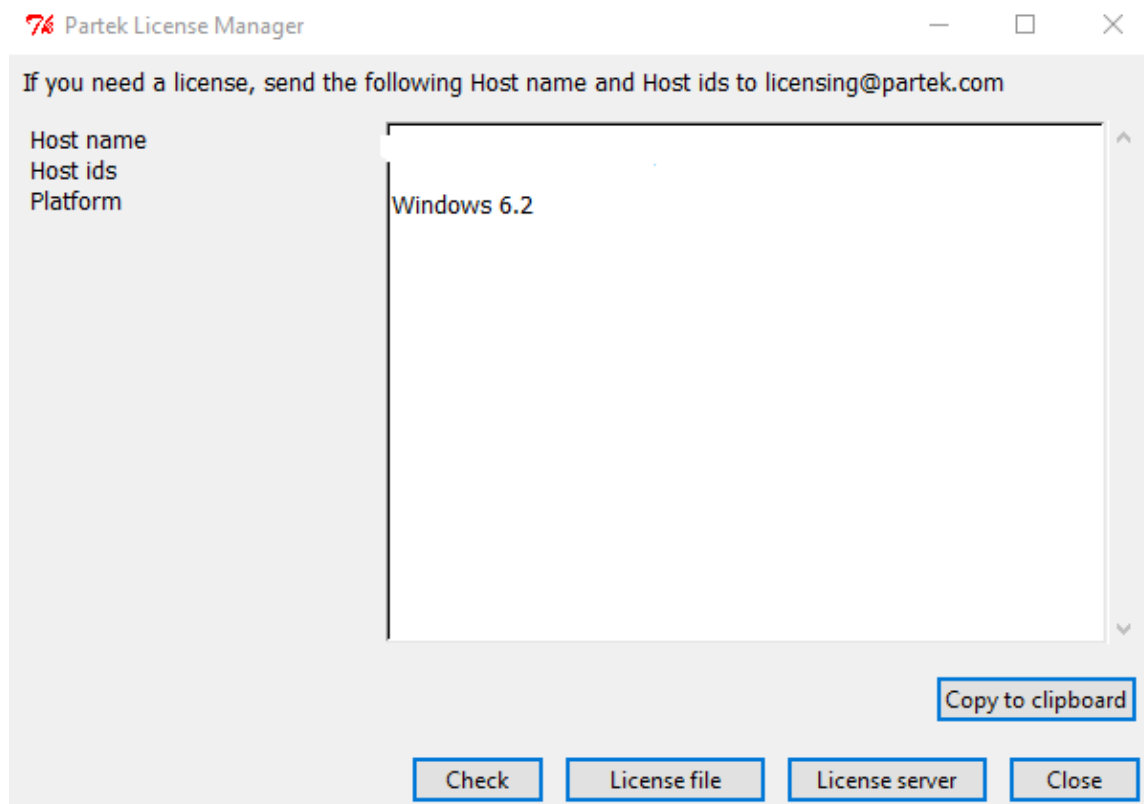


NOTE: We have 4 concurrent licenses for Partek Suite available for use at UNC-CH. You may find all of them in use at times (rare). If that happens, please check back periodically (~15 min) till you find an open license.

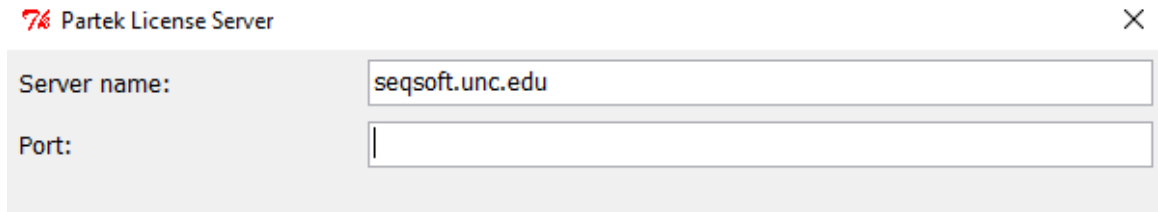
Off-campus use requires UNC-VPN (available at <https://shareware.unc.edu>).

Installing Partek Genomics Suite onto a Windows computer

1. Double click the Partek Setup.exe, setupPGS.6.xx.xxxx.exe that you downloaded to start installation. The Partek Genomics Suite Setup Wizard will walk you through to finish the installation. We recommend using the default settings, typically under C:\Program Files\, as the installation location.
2. When you launch the Partek Genomics Suite, you will see partek license manager start



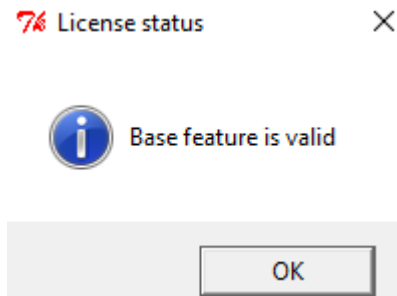
3. Click on the license server button, which will bring up a new dialog box. Enter "seqsoft.unc.edu" as the server name and remove a value (if present) for the port option completely.

Partek License Server ×

Server name:

Port:

4. Click on "Check" button to verify license. You should see



Once you close the license manager by clicking on "close" Partek should open.

5. The software is now ready for use.