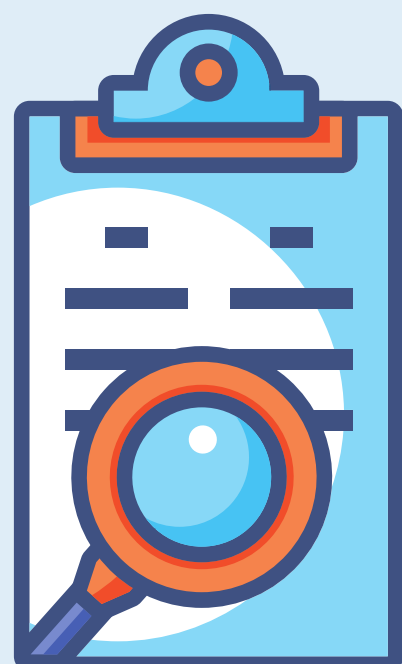




Adult UTI Guideline Update

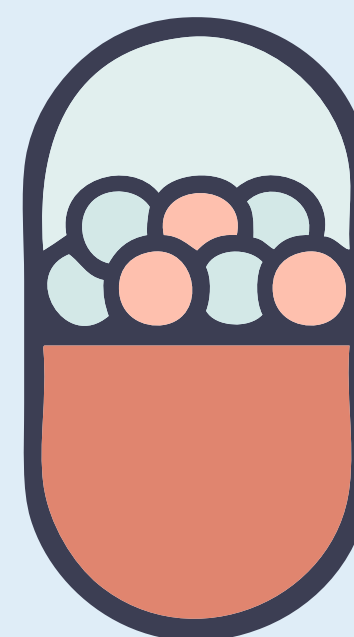
4 New Algorithms



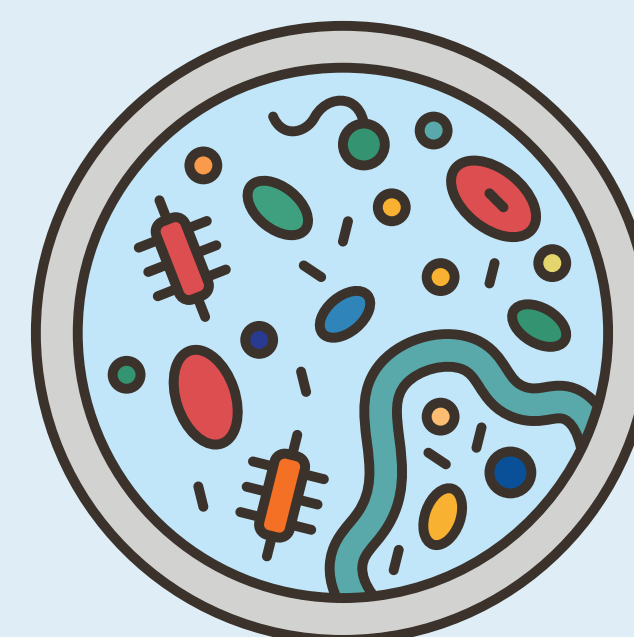
Diagnosis



Altered Mental Status



Treatment



Urine Culture Interpretation

Reserve UTI diagnostic workup for those with UTI symptoms:

- Painful urination
- New or worsening urinary frequency or urgency
- Suprapubic pain
- Flank pain or tenderness

Inappropriate urine cultures pose harm to patients

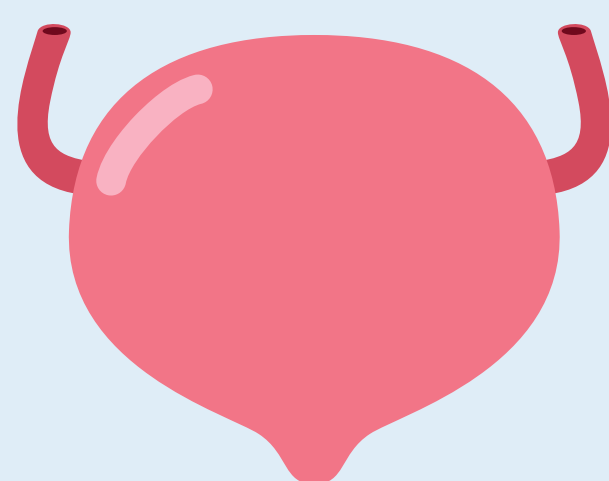


Unnecessary antibiotics



Misdiagnosis

Bladder Infection or Cystitis



UNC 1st line options:

- Nitrofurantoin
- Bactrim (SMX-TMP)



Ciprofloxacin does NOT cover 1 in 3 E. coli isolates at UNCMC

Pyelonephritis



UNC 1st line empiric options:

- Ceftriaxone
- Gentamicin



Target therapy to cultures & use shortest effective duration