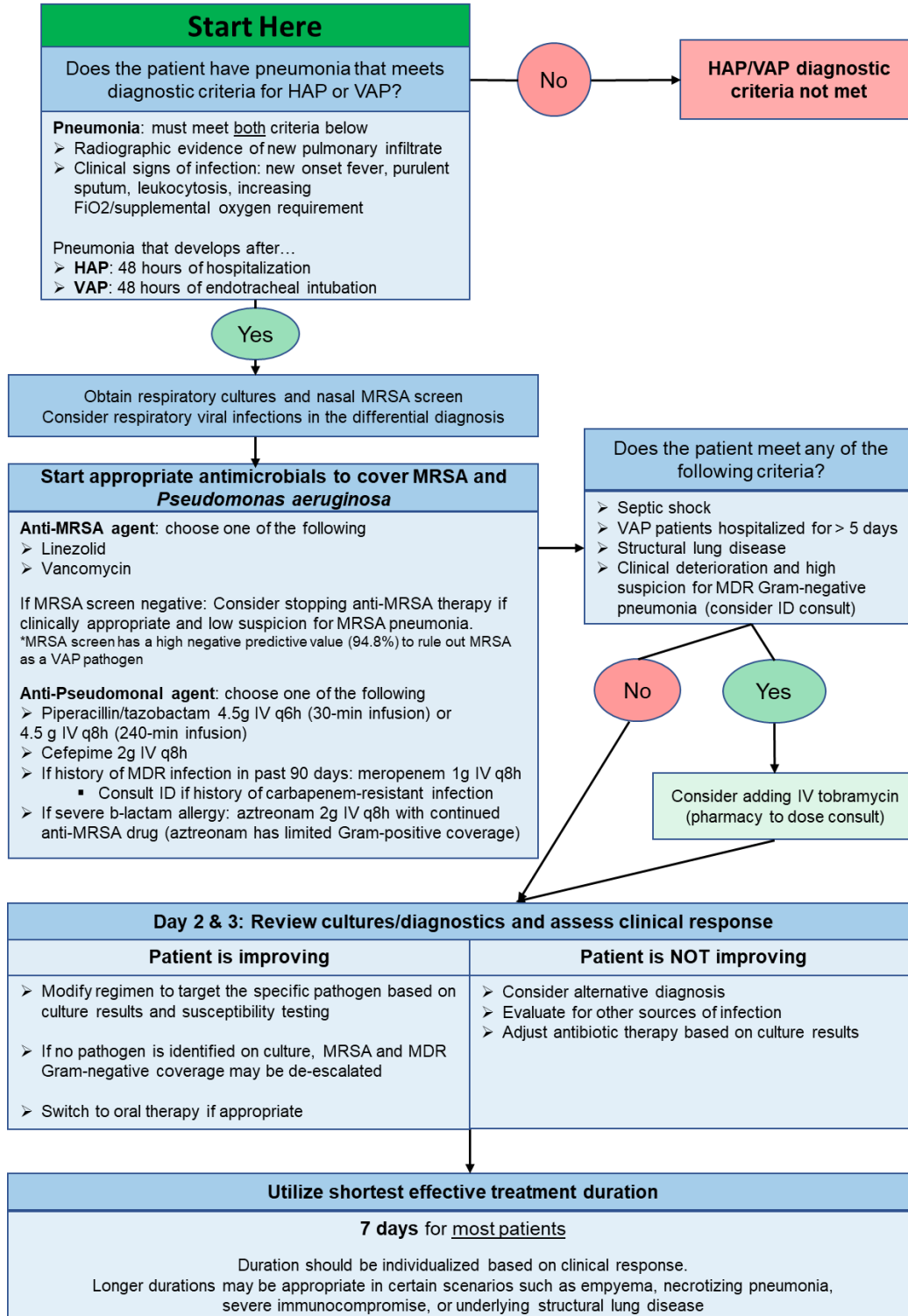


## Hospital-Acquired Pneumonia for Adults



All suggested dosing regimens assume normal renal function; renal dose adjustments may be required.

## REFERENCES

1. Kalil AC, Metersky ML, Klompas M, et al. Management of adults with hospital-acquired and ventilator-associated pneumonia: 2016 Clinical practice guidelines by the Infectious Diseases Society of America and the American Thoracic Society. *Clin Infect Dis*. 2016;63(5):e61-e111.
2. Parente DM, Cunha CB, Mylonakis E, Timbrook TT. The clinical utility of methicillin-resistant staphylococcus aureus (MRSA) nasal screening to rule out MRSA pneumonia: A diagnostic meta-analysis with antimicrobial stewardship implications. *Clin Infect Dis*. 2018;67(1):1-7.

This document is intended for educational purposes and does not replace the medical decision and diagnosis of a treating provider. Although we have made a good faith effort to provide accurate information as of the date of creation, we make no representation or warranty regarding its accuracy and have no obligation to update the guidelines as new medical information becomes available.