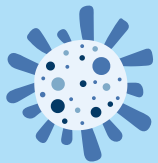
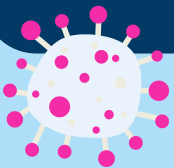


# Extended-Infusion Cefepime

As emerging antibiotic resistance limits treatment options for some bacteria, dose optimization is a key component for treatment success.



**Extending the infusion of cefepime is recommended to optimize dosing for some infections.**



**Intermittent (Traditional) Infusion: 30 min**

**Extended (Prolonged) Infusion: 240 min**

**If co-infusing other IV medications, verify compatibility with Trissel's IV Compatibility Chart via Lexicomp.**

**Contact team pharmacist with questions related to compatibility, IV line access, or medication scheduling.**

