



UNC
SCHOOL OF MEDICINE

WELCOME New Faculty!

Orientation Guide

These materials are intended to orient new faculty to the University of North Carolina School of Medicine and provide resources for additional information.

Topics covered in this slide deck include:

- » Education at the School of Medicine

UNC School of Medicine Orientation Education Overview

Julie Story Byerley, MD, MPH
Vice Dean for Education

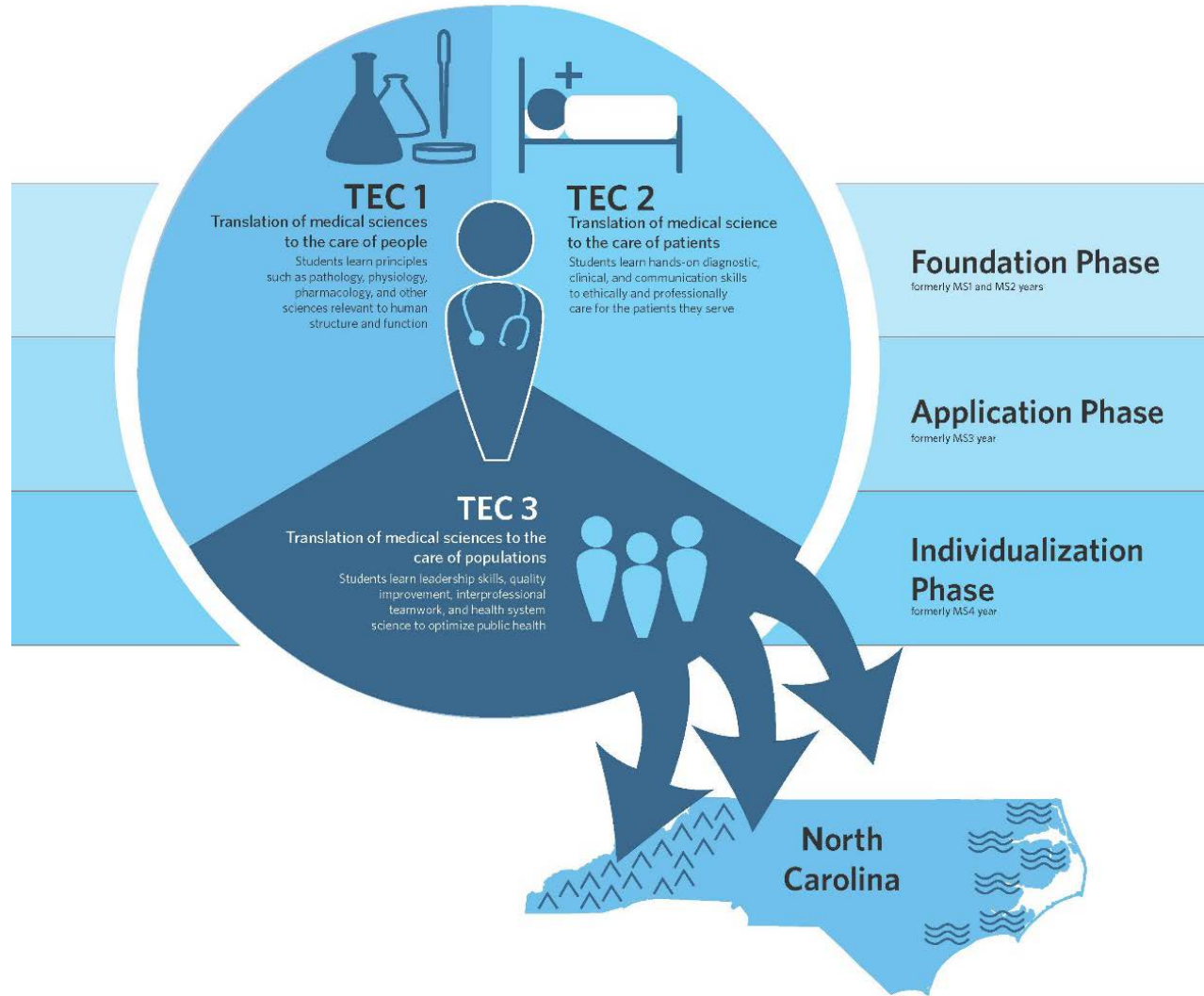


A Broad Mission Educationally

- 190 Med Students per class
 - » Diversity at the 99thile
 - » 85% North Carolinians
 - » Many into primary care
 - » Lots of rural incentives
 - » 10-12 MD/PhD per year
 - » Often ~ 20 MD/MPH
 - » ~5 MD/MBA
- > 7000 applicants
- Very high yield on acceptances
- ~150 Undergraduate Students
- ~500 Post-Docs
- ~500 Basic Science PhD & Masters Students
- ~800 Residents & Fellows at UNC Hospitals
- ~250 Allied Health PhD & Masters Students
- ~250 Allied Health Professional Degree Students
 - » Physician Assistant, Physical Therapy, Occupational Therapy, Speech and Hearing, Neurodiagnostics, etc.

MD Curriculum

Translational Education at Carolina (TEC)





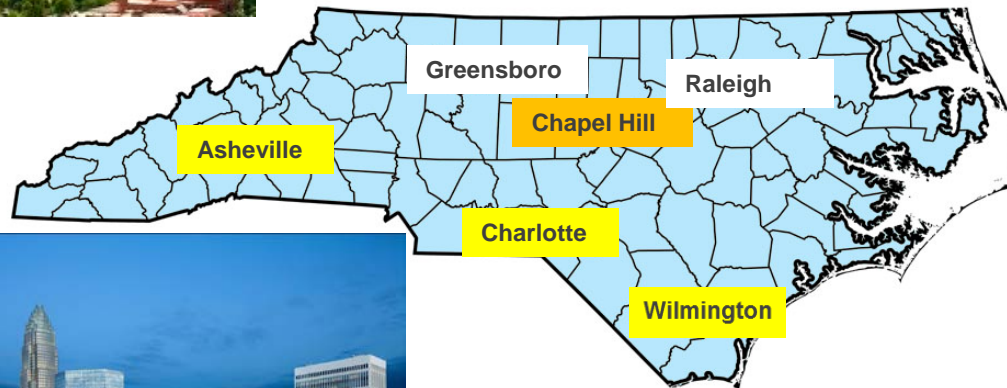
University of North Carolina School of Medicine (MD Program Curriculum), Translational Education at Carolina (TEC) (Entering Class of 2018)

August	September	October	November	December	January	February	March	April	May	June	July	
Foundation Phase Medical Science (MSC) 1 Orientation Principles of Medicine Immunologic System Hematologic System Cardiovascular System Patient Centered Care (PCC) 1 Professional Development (PD) 1					Winter Break	Foundation Phase Medical Science (MSC) 2 Respiratory System Urinary System Gastrointestinal System Neurologic System Patient Centered Care (PCC) 2 Professional Development (PD) 2					Individualization Phase Individualization Phase Experience/Vacation	
Foundation Phase Medical Science (MSC) 3 Behavioral Science Endocrine System Reproductive Systems Musculo-skeletal System Integumentary System Multi-organ Synthesis Patient Centered Care (PCC) 3 Professional Development (PD) 3						Winter Break	Foundation Phase USMLE Step 1 Exam Preparation		Application Phase Community Based Longitudinal Care Longitudinal Ambulatory Core Clinical Experiences Intensive Integration Application in Asheville, Charlotte and Wilmington Care of Specific Pops Care of Women and Children			
Application Phase Care of Specific Populations Care of Women and Children Patients with Neurologic and Mental Illnesses Hospital, Interventional, and Surgical Care Care of Hospitalized Adults Intensive Integration Application in Asheville, Charlotte and Wilmington					Winter Break		Application Phase Hospital, Interventional, and Surgical Care Care of Surgical Patients Intensive Integration Application in Asheville, Charlotte and Wilmington		Individualization Phase Vacation Acting Internship (AI) Acting Internship (AHEC) Emergency And Critical Care APS Step II Prep/ Additional Elective Introduction to Acute Care (IAC)			
Individualization Phase Advanced Clinical Selective Advanced Clinical Selective Science of Medicine Residency Interviews/ Free Period Residency Interviews/ Free Period Introduction to Acute Care (IAC)						Winter Break	Individualization Phase Elective Elective Capstone Elective Introduction to Acute Care (IAC)					

Clinical Teaching Occurs Across the State



Including Launch of the Application Phase





Interprofessional Opportunities

UNC Chapel Hill

Pharmacy

UNC Eshelman
School of Pharmacy

Nursing

UNC Chapel Hill,
School of Nursing

Public Health

UNC School of
Public Health

Medicine

UNC School of Medicine

Health Sciences
Library

Health Sciences Library

Dentistry

Dental
Research

UNC Hospitals

North Carolina
Memorial
Hospital

Burnett -
Womack
Building

Eric Munson
Concourse
at UNC
Hospitals

UNC School of Dentistry

