

Introduction



Getting Started

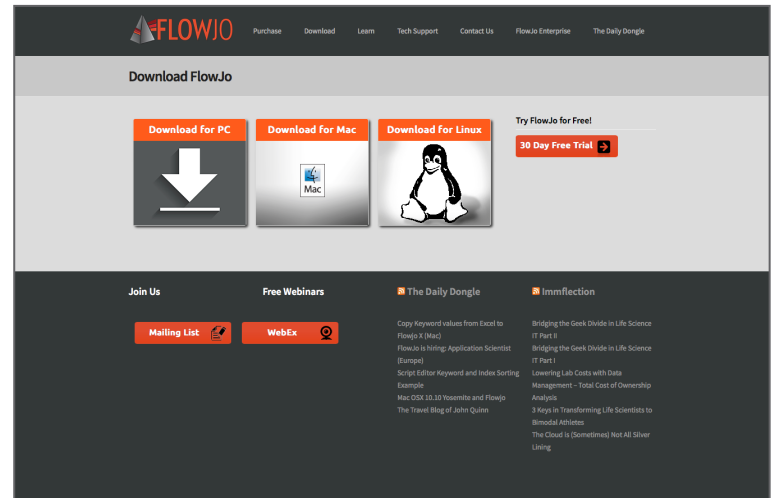
To get started using FlowJo, you will first need to install the software. The easiest way to do this is to download the current installer, which you can find on our website at:

www.flowjo.com/download-flowjo

Select your platform (Mac or PC) at the top of the page.

For a PC, download the installer.exe file and open it to install the program. Choose to place a shortcut on the desktop and when the installer finishes, double-click on the FlowJo shortcut icon to launch the program.

For a Mac, download the installer.zip file and double-click it to extract the program. Once the .zip file is extracted, double-click the icon to launch FlowJo.



When you launch FlowJo for the first time, the FlowJo license information window will appear. You must select the type of license that you have and agree to the license terms.

For the purpose of running our tutorials, you need only to select **Continue under free demonstration** license and click **Done**.

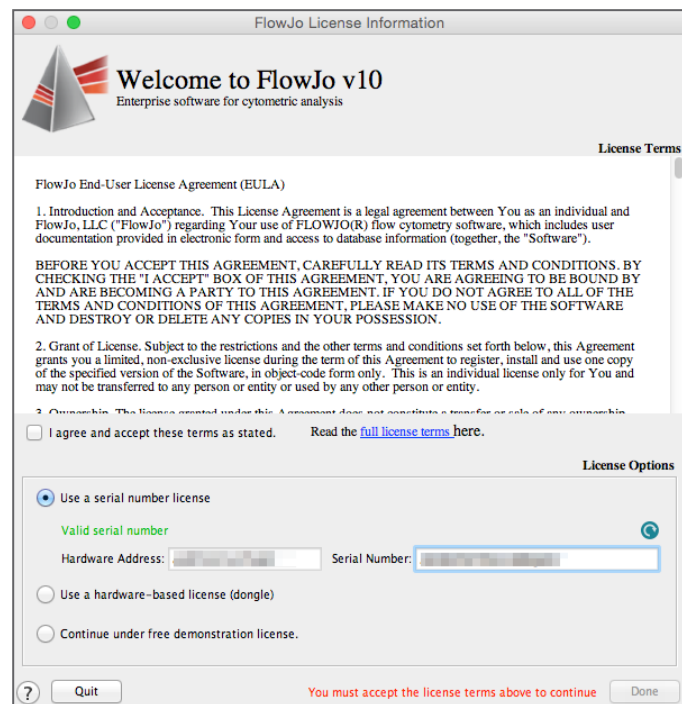
For more information about licenses, visit:

www.flowjo.com/purchase

If you have a dongle (a usb drive that contains a license key) plugged into your computer, FlowJo will detect it automatically and allow you to activate the program.

For more dongle information and support, visit:

www.flowjo.com/help-with-dongles




- If you have an enterprise group license, you can configure the connection here as well.
- If you have an individual license that you would like to use, input your serial number in the **Serial Number** field (shown above left).

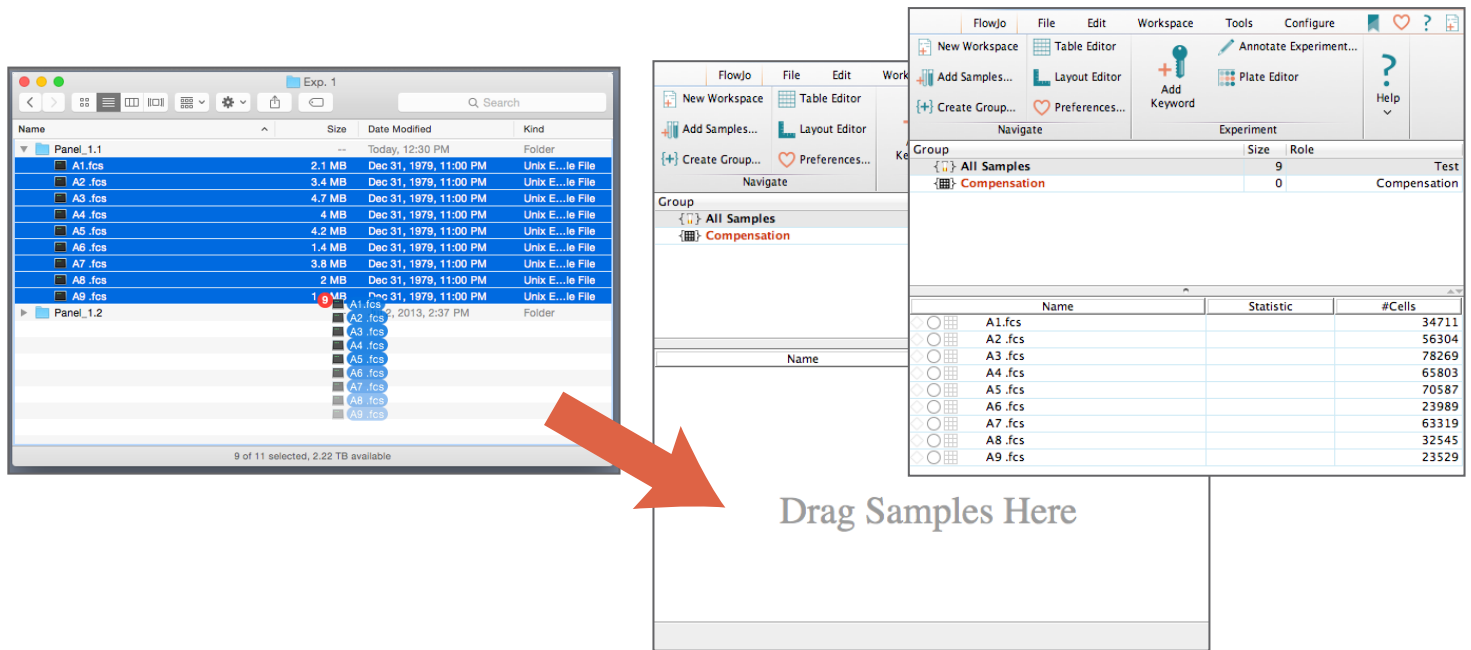
Demonstration data and the accompanying workspaces can be acquired from our website at:

www.flowjo.com/tutorials

Following this link will bring you to a page where you can download our *Basic Tutorial*, *Advanced 8-Color Tutorial* & additional tutorials as .zip files with .FCS files and a PDF of the tutorial. Save these files to disk and double-click on the compressed file to extract them on a Mac and right-click to extract them on a PC.

Introduction to FlowJo v10.0.8 Adding Samples to your Workspace

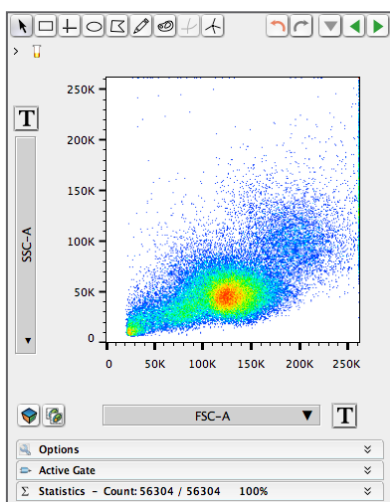
Now that you have installed FlowJo, launched the program and agreed to the terms, locate the data files on your computer or server. To add samples, drag-and-drop data files into the FlowJo workspace. Or you may choose to use the **Add Samples**  button in the FlowJo toolbar.



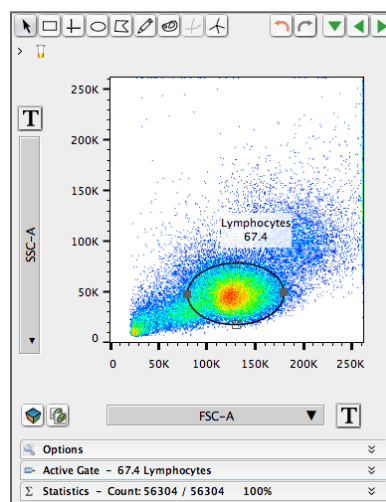
Introduction to FlowJo v10.0.8 Graph Window & Gating

Once your samples are shown in the workspace, begin by double-clicking a single sample to open the **Graph Window** to create a **Gate** around the desired population.

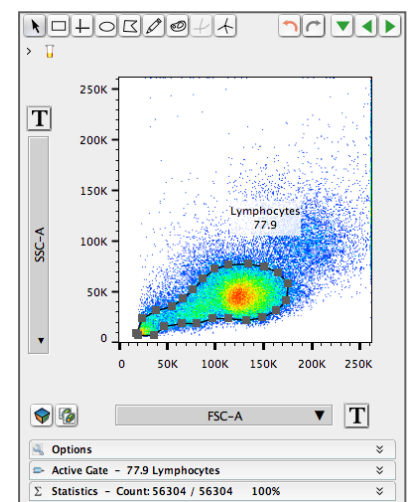
You have a choice of tools within the **Graph Window** to use for gating, including rectangular, elliptical, polygonal, standard quad, curly quad, spider quad, freehand and auto gate.



Graph Window



Elliptical Gate

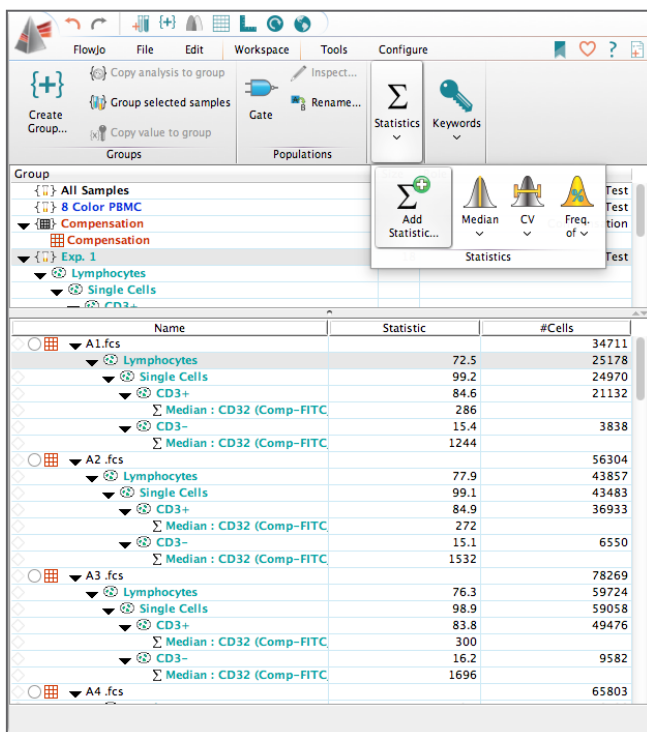


Auto Gate

For more on gating, visit:

docs.flowjo.com/vx/graphs-and-gating

To quickly add statistics to your workspace, click the appropriate icon within the **Statistics** drop-down menu.



Once you have added statistics and gated the necessary populations to do your research and analyses, you can compile all of your data into one simple report which can be exported in various ways for publication and archiving.

For more about statistics, visit:

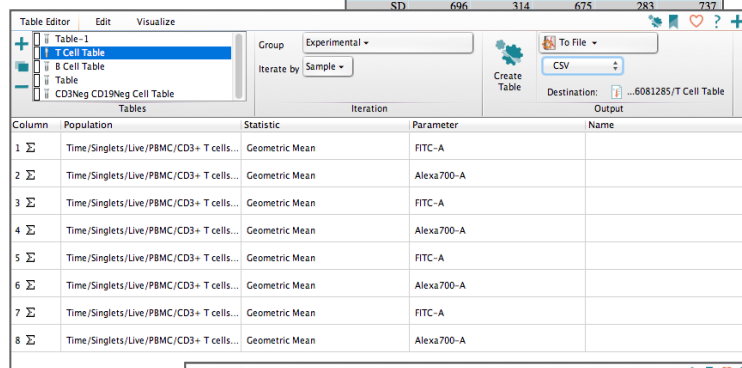
docs.flowjo.com/vx/workspaces-and-samples/ws-statistics

Creating tables and reports happens within live editors that update as you make gate adjustments or add statistics and values.

Ancestry Subset Statistic For	Time/ Singlets/ Live/ PBMC/ CD3+ T	Time/ Singlets/ Live/ PBMC/ CD3+ T	Time/ Singlets/ Live/ PBMC/ CD3+ T	Time/ Singlets/ Live/ PBMC/ CD3+ T	Time/ Singlets/ Live/ PBMC/ CD3+ T
Run 2 S...	5091	2250	3878	2381	5654
Run 2 S...	5142	2131	5797	2336	6000
Run 2 S...	6151	2365	6412	2338	6064
Run 2 S...	5400	2553	6721	3131	5303
Run 2 S...	4990	2809	6103	2806	6255
Run 2 S...	5578	2268	6125	2294	6108
Run 2 S...	5083	2615	5123	2244	4835
Run 2 S...	6299	3009	5482	2410	5254
Run 2 S...	5883	2668	5524	2219	5101
Run 2 S...	4828	2152	5656	2266	5562
Run 2 S...	4099	1918	4855	2099	4265
Run 2 S...	4542	2102	4673	2061	5023
Run 2 S...	4636	2325	5085	2389	5257
Run 2 S...	3921	2037	4651	2438	3914
Run 2 S...	4316	2188	5567	2401	5635
Run 2 S...	3673	1973	4240	2030	4004
Run 2 S...	5263	2956	6465	2793	6423
Run 2 S...	5262	2323	6338	2645	6111
Run 2 S...	5669	2607	5924	2336	5550
Run 2 S...	5539	2364	5008	1892	4410
Run 2 S...	4970	2098	5935	2395	5751
Mean	5064	2367	5598	2376	5356
SD	696	314	675	283	737

Creating **Batch Reports** allows you to iterate over your data and generate analyses for many samples at once.

The **Layout Editor** allows you to generate multiple types of reports for presentations, publications and to amaze your friends.



For more on iteration and creating batch reports, visit:
docs.flowjo.com/vx/graphical-reports/le-iteration

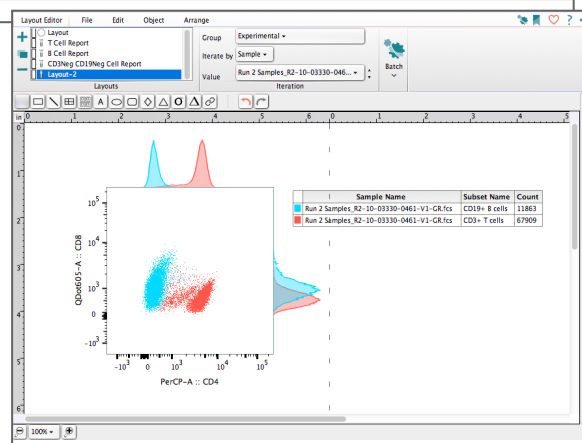
For more on creating graphical reports in the layout editor, visit:
docs.flowjo.com/vx/graphical-reports

FlowJo will also allow you to save your progress in a multitude of file types. For more on saving and exporting, visit:

docs.flowjo.com/vx/workspaces-and-samples/ws-savinganalysis

or

docs.flowjo.com/vx/graphs-and-gating/gw-overview/gw-export



For a more thorough introduction to basic FlowJo usage, download the *Basic Tutorial* from the following link:

www.flowjo.com/tutorials

Customer Support



FlowJo Customer Support is here for you!

Got a flow question? FlowJo's customer support team is here to help. Talk directly with a support person or email us, and get an answer to your question within 24 hours. We have friendly support people to help with everything from basic questions for licensing and purchase to using the advanced features of FlowJo. Yes, tech support is included free with the price of a license. We strive to make your experience the best in the industry.

We have some very useful documentation on our website and tech blog

Documentation www.docs.flowjo.com

The Daily Dongle www.flowjo.typepad.com/the_daily_dongle

FlowJo tutorials and manuals www.flowjo.com/tutorials

FlowJo videos www.flowjo.com/videos

Please download our software here www.flowjo.com/download-flowjo

For a 30 day trial serial number,
register your computer here www.flowjo.com/download-flowjo

The FlowJo customer support team can be reached between 7:30am and 5:00pm (PST)
Phone: 541-201-0022 | Toll Free (US Only) 800-366-6045

FlowJo tech support techsupport@flowjo.com

Asian support support@flowjochina.com

Site license support fls@flowjo.com

Purchasing and licensing office@flowjo.com

www.flowjo.com

FlowJo is licensed for research purposes only. Please contact FlowJo, LLC for details on clinical installations.

©1997-2015 All rights reserved.

