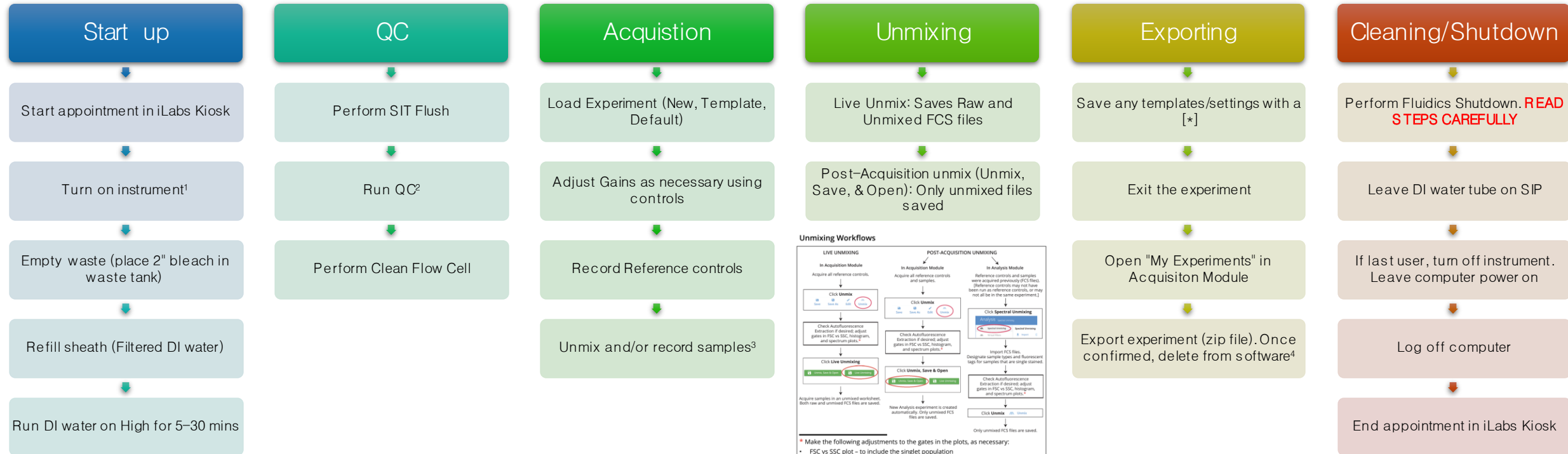


Aurora Quick Start Guide



1. First user of the day will turn the instrument on, staff will do this M–F, run water for 30 mins first instrument is first turned on
2. See User Guide under Daily QC for more details. Beads can be found in the mini fridge under the Aurora in a Blue Tube holder. They are on the left side of the holder with the label "Aurora QC". If QC fails, ensure there are no bubbles or clogs in system, perform clean flow cell, contact staff
3. Keep event rate below 3000 events/sec
4. Staff cleans data from software every 2 weeks. Make sure to export into flow folder