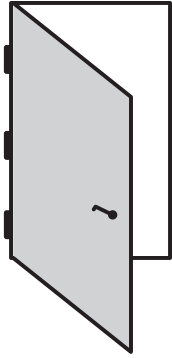
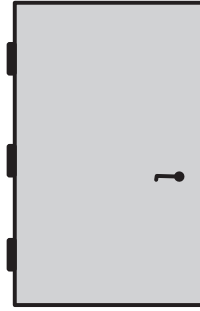


Environment

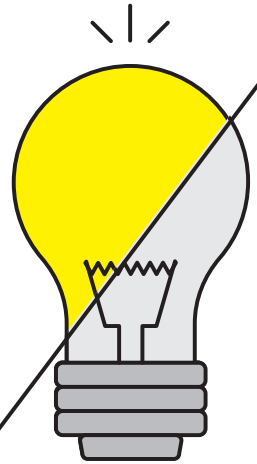


Door Open

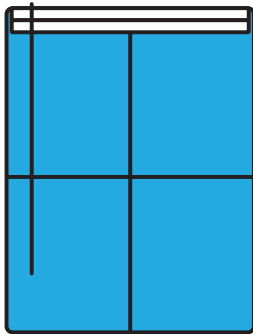


Door Closed

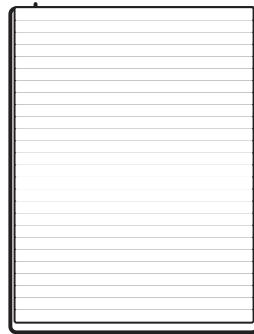
Lights On



Lights Off



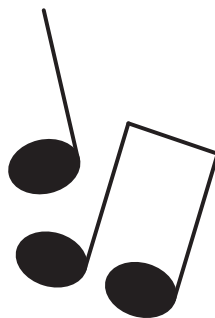
Blinds Open



Blinds Closed



TV On



Music On



No TV/Music

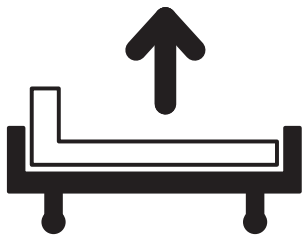
Comfort



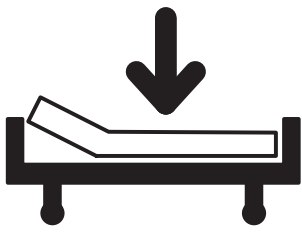
Covers On



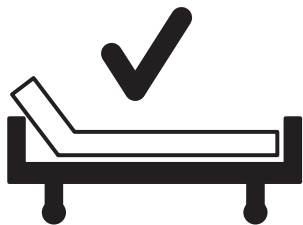
Covers Off



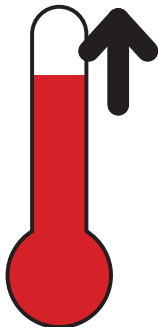
Bed Position Up



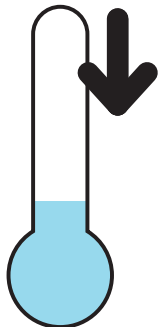
Bed Position Down



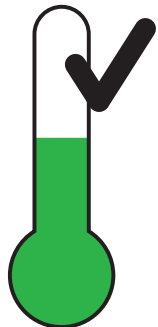
Bed Position OK



Room Temp Warmer



Room Temp Cooler



Room Temp OK

Visitors and Communication



Speak to Me



Speak to my Family



Speak to Both



Visitors OK



No Visitors

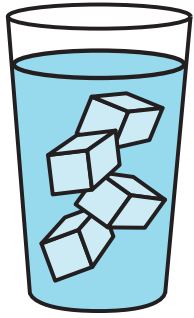


Verbal Communication

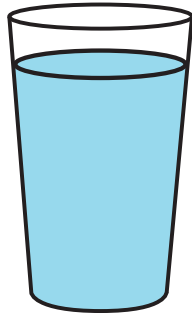


Written Communication

Beverages



Water with Ice



Water without Ice



Hot Tea



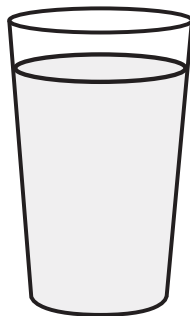
Iced Tea



Coffee



Soda



Milk



Juice