

# Building Emergency Action Plan Worksheet

The University of North Carolina at Chapel Hill



UNC  
LVX

INSTITUTIONAL INTEGRITY  
AND RISK MANAGEMENT

# Building Emergency Action Plan

## Building Worksheet

Update: 9/9/2024

Bondurant Hall  
**Building #:** 206  
**Address:** 321 S Columbia Street  
Chapel Hill, NC 27514

**Department(s) Occupying:**

- School of Medicine
- Department of Health Sciences

## Introduction

This is the Building Emergency Action Plan (BEAP) Appendix for Bondurant Hall. This building-specific appendix is to build upon the university-wide Emergency Action Plan (EAP) Base Plan with tailored information specific for occupants within Bondurant Hall.

Different emergencies require different protective actions to keep people safe. The unpredictable nature of emergencies requires quick action and clear thinking to avoid injury. This document contains specific information for protecting yourself during most emergencies but will not provide an absolute solution for every circumstance. During an actual emergency university personnel and first responders may supplement these plans with detailed instructions via our emergency communications protocols. Any specific instructions given during an incident are to take precedence.

The evacuation of university facilities presents unique situations and challenges. Some facilities may house only one department or college office whereas other facilities may contain business space for numerous departments. Additionally, the space occupied in university facilities may contain a wide range of uses including administrative office space, classroom space, lecture halls, conference rooms, laboratories, academic office space, etc. This document serves to help building occupants customize their building emergency action plan based upon the specific needs of their building.

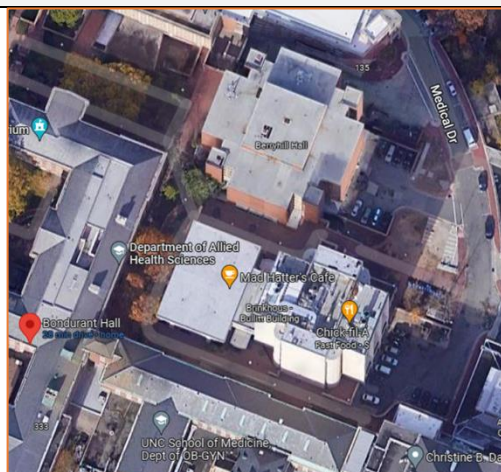
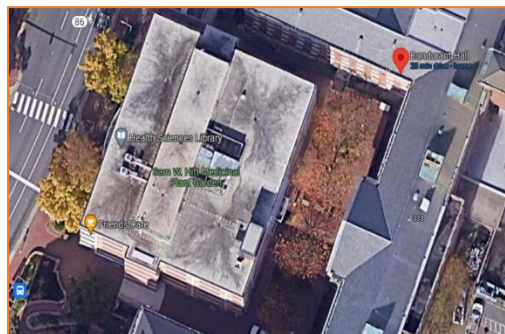
## Occupant Reference Sheet: OBJ Bondurant Hall

Building Emergency Coordinator: Gabbie Kirby

The purpose of the Occupant Reference Sheet is to provide building occupants with a quick reference on evacuation and shelter locations within the building, along with locations for life-saving Automated External Defibrillators (AED) and Stop the Bleed Kits.

### Evacuation and Assembly Areas

Who:	Where:
Faculty, Staff, Students, and Visitors	<b>Health Sciences Library:</b> Sidewalk in front of the signs for the Health Sciences Library <b>*at least 50' away from the building</b>
Faculty, Staff, Students, and Visitors	<b>Beach/Oasis/Medical Drive:</b> To the right rear of The Beach out near Medical Drive <b>*at least 50' away from the building</b>



### Shelter-In-Place Locations

Basement (LL) along the main corridor is a potential shelter location for the building and could support many building occupants. Secondary locations are within Division suites and any occupants on the 4<sup>th</sup> floor should move to the 3<sup>rd</sup> floor and shelter within a division suite.

### AED Locations and Stop the Bleed Kit (Red)

Floor:	Stop the Bleed Kit:	Description of AED Location:
LL		Immediately to the right of L083 (Men's Locker Room)
Ground		Located on the ground floor to the right of suite G060
