

Outpatient Penicillin Allergy Assessments at UNC

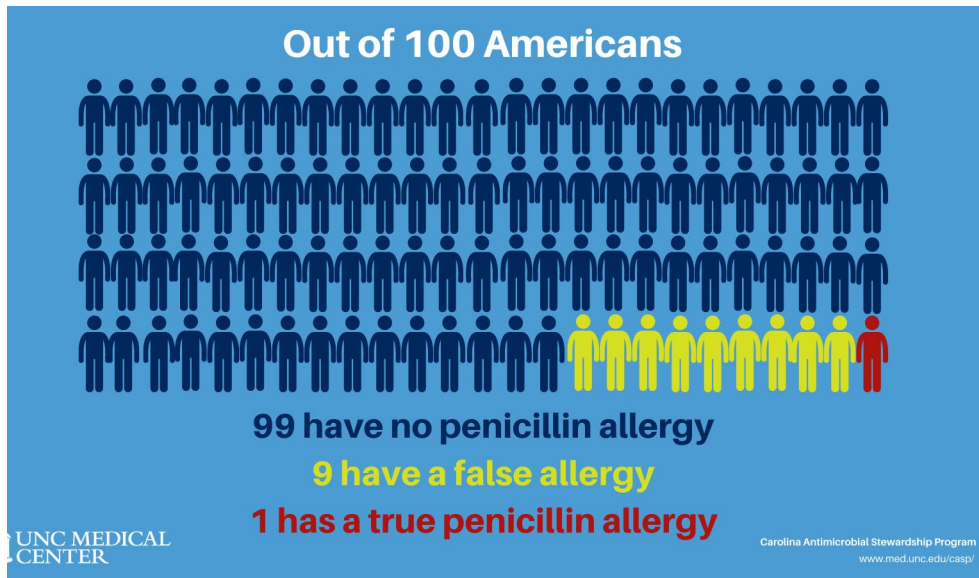
Renae Boerneke, PharmD, BCPS, CPP

Mildred Kwan, MD, PhD

September 21, 2021



What's in a Penicillin Allergy label?



A PCN Allergy label leads to increased use of broad spectrum antibiotics leading to...

Adverse patient outcomes due to lack of targeted antibiotic therapy

Increased patient adverse effects from broad spectrum antibiotics

Increased cost to patients and healthcare systems

~ 243,000 patients in the UNC Health Care system are labeled as PCN allergic.

Perspective on the Effect of a PCN Allergy Label...

Hey Doc,
Is there anything
that could have
prevented me from
having a heart valve
replacement?



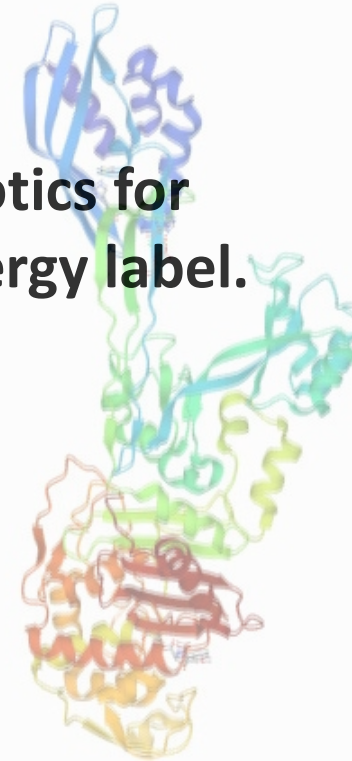
Mr. Stapha,
Even though we treated
you with strong IV
antibiotics, the infection
was not eliminated. A
penicillin class antibiotic is
the treatment of choice for
the bacteria on your heart
but we were unable to
use it based on your past
allergy.

Project Aim Statement

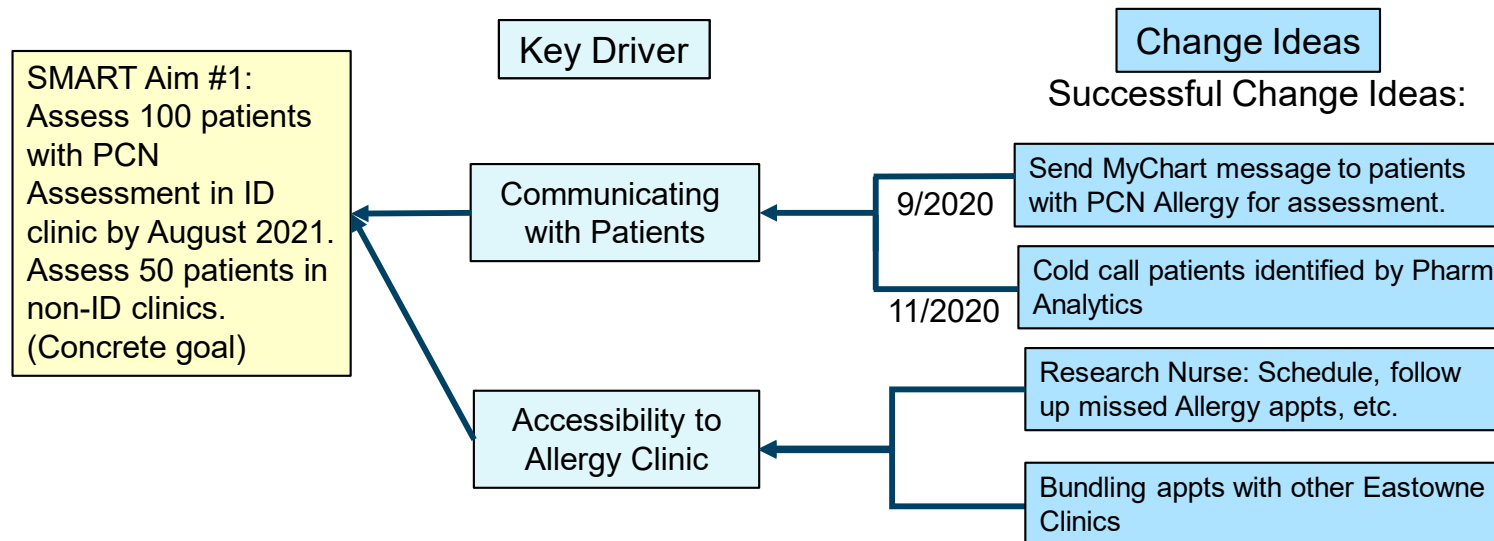
Increase use of appropriate, targeted antibiotics for specific infections in patients with a PCN allergy label.

Examples:

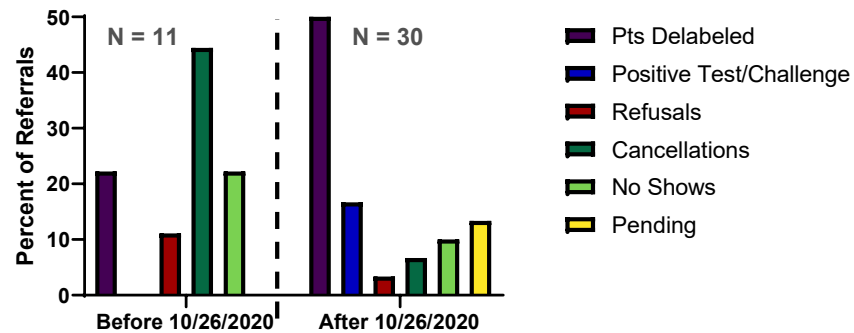
- **Intrapartum Group B Strep prophylaxis in pregnancy.**
- **Syphilis**
- **Methicillin Sensitive Staph aureus**
- **Group A Streptococcal pharyngitis**



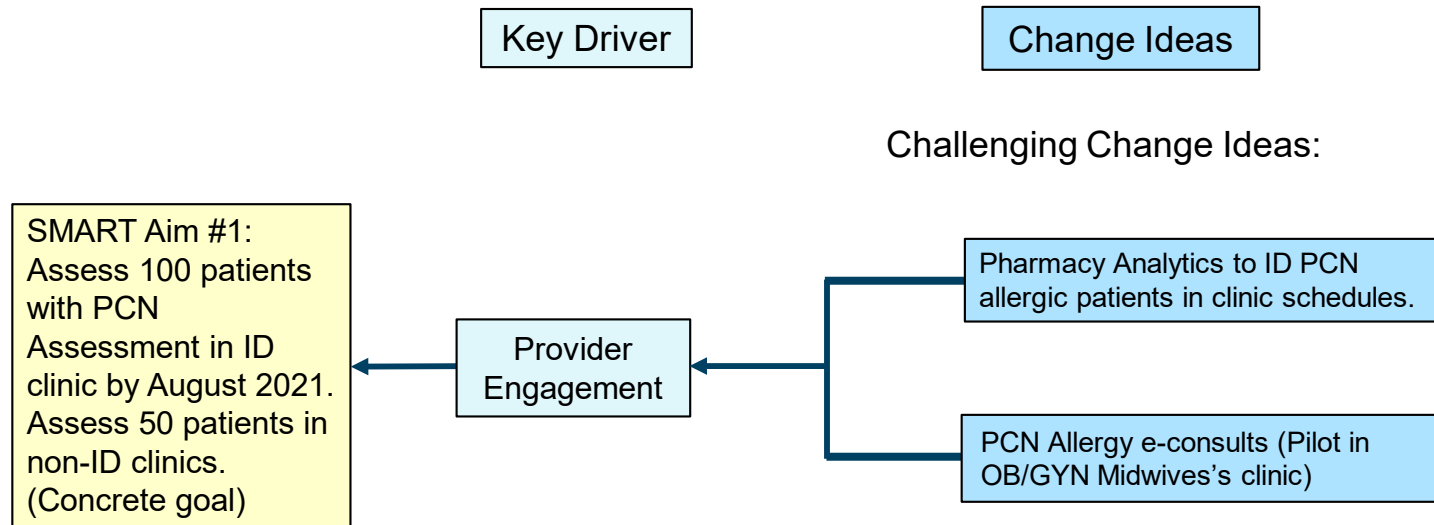
Change Ideas to Reach the Project Aim



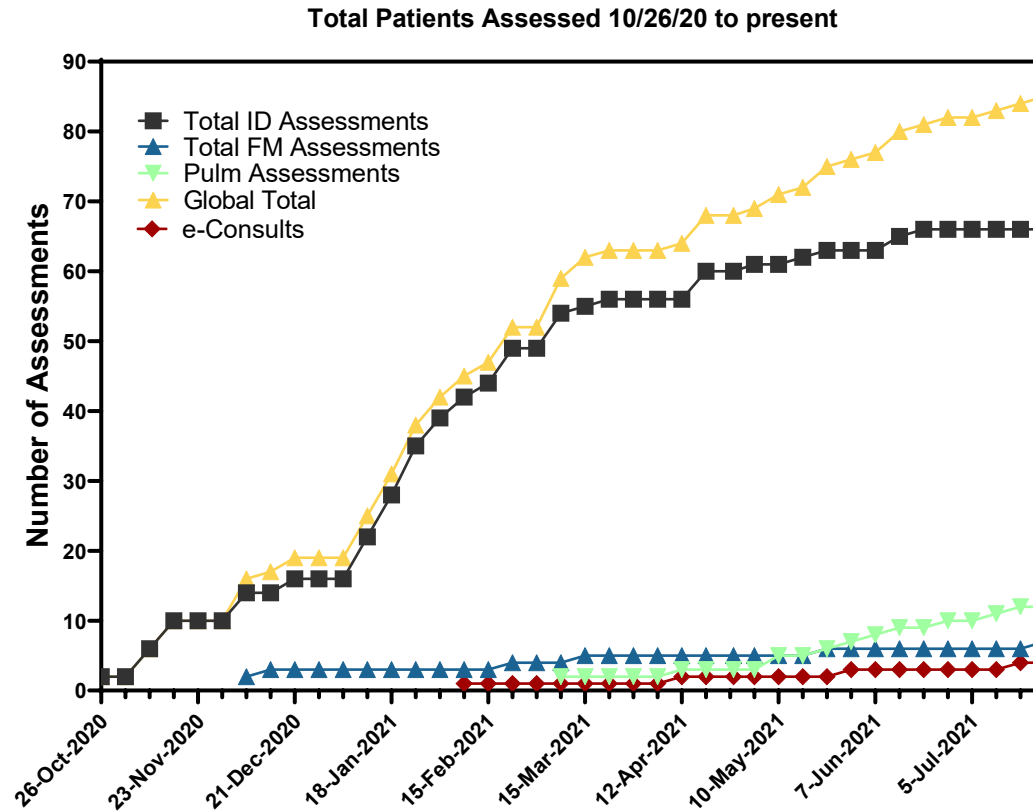
Completion of Allergy Referrals



Change Ideas to Reach the Project Aim



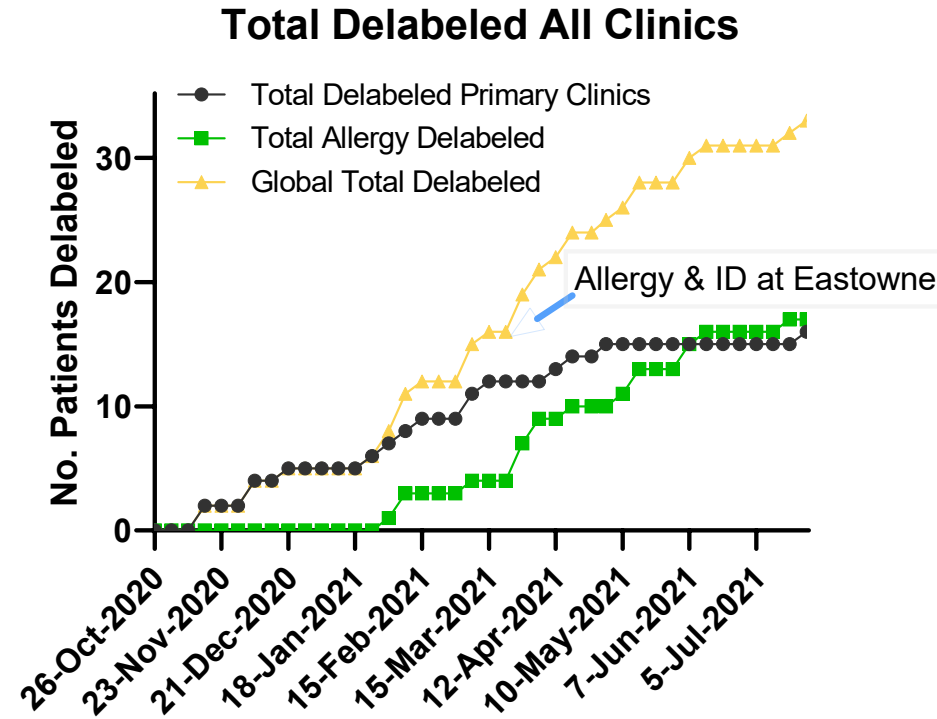
Engagement



PCN allergy assessments can be done in non-Allergy clinics

Barriers to success include incorporation into workflow, confidence in assessments, patient access to Allergy.

Results



Delabeling in Allergy Clinic increased due to:

- Eastowne care coordination
- Tracking by program nurse

Expanding PCN allergy Assessments

Phase 1: Educate Patients/Institution on PCN Allergy

- Develop Toolkit ✓
- Develop PCN Allergy e-consult ✓
- Pilot in High Needs Clinics *In progress*
- Develop Patient Education Tools ✓

Phase 2: Align/Build Institutional Team

Modify Toolkit for General Use

- Inpatient Assessments *In progress*
- Pre-operative Evaluations *In progress*

Expand e-consults to all clinics

Communicate with patients/increase access

Phase 3

Expand Out of UNC Medical Center

In progress

Move to Inpatient Evaluations

In progress

Opportunities for Improvement

Project Coordination/Referral Support

- **Development of QI Work Group within TARC**

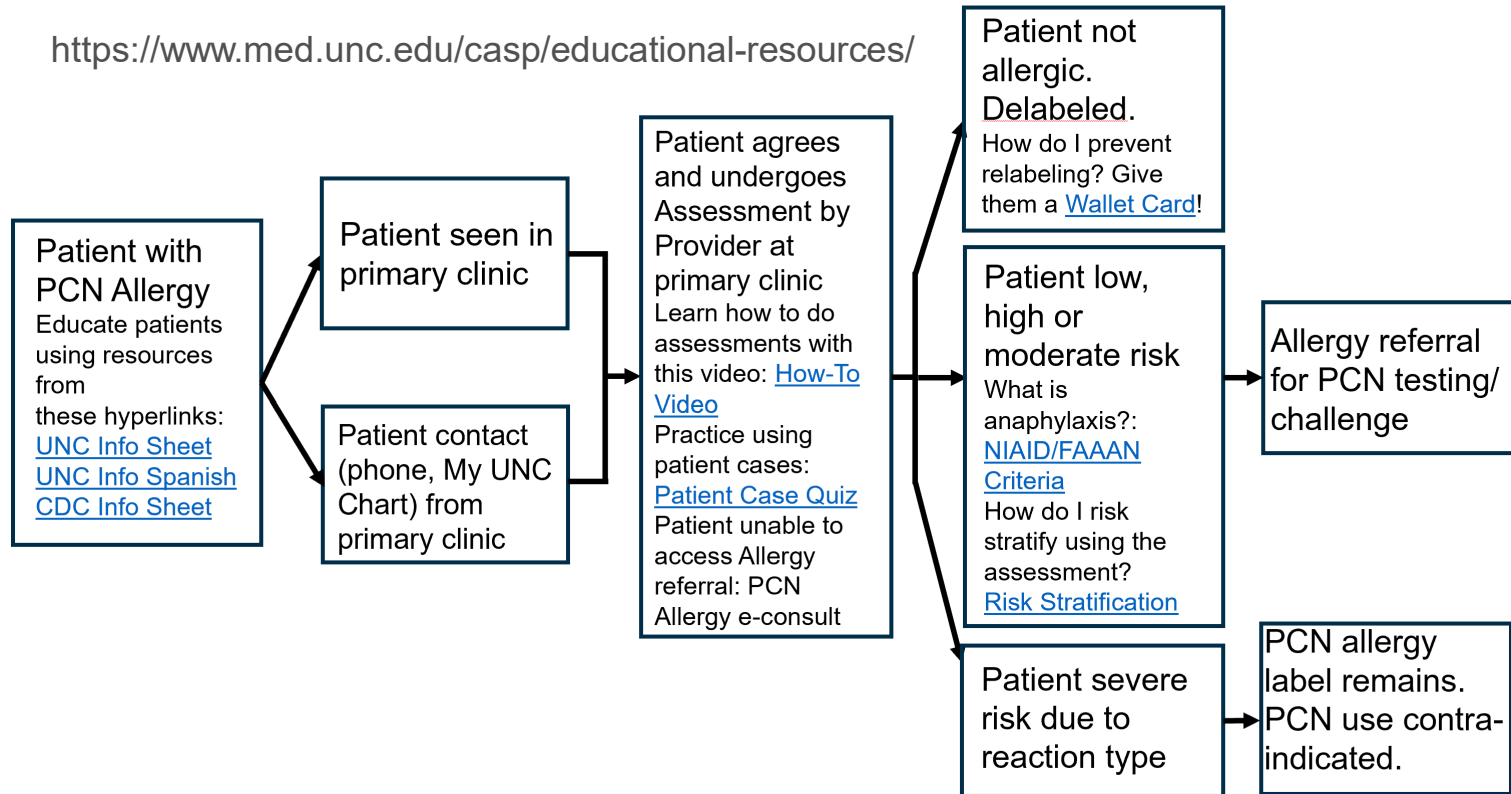
Enduring Epic Support for Decision Support Tools and Patient Identification

Introducing Change Ideas to Address Equity

Expanding PCN Allergy E-consults

Most important factor to maintain momentum is culture change.

<https://www.med.unc.edu/casp/educational-resources/>





Thank You

 Cissy Amelio Thurston Arthritis Research Center
IHQI: Matt Huemmer Beth Jonas
 Kelly Reilly Jamie Waldron
 Arianna Keil Andrew Winslow
 Shana Ratner Maternal Fetal Medicine
 May-Britt Sten Kim Boggess
 Laura Brown Nerlyne Desravines
 Asha Talati

✉ Rena Boerneke@unchealth.unc.edu
Mildred_Kwan@med.unc.edu