

Advancing Parenteral Nutrition Use at UNC

Project Leads: Emily Coscia, Sara Bliss, Anne Peery

Project Sponsor: Udobi Campbell, John Downs

Project Team Members: Matt Huemmer, Shana Ratner



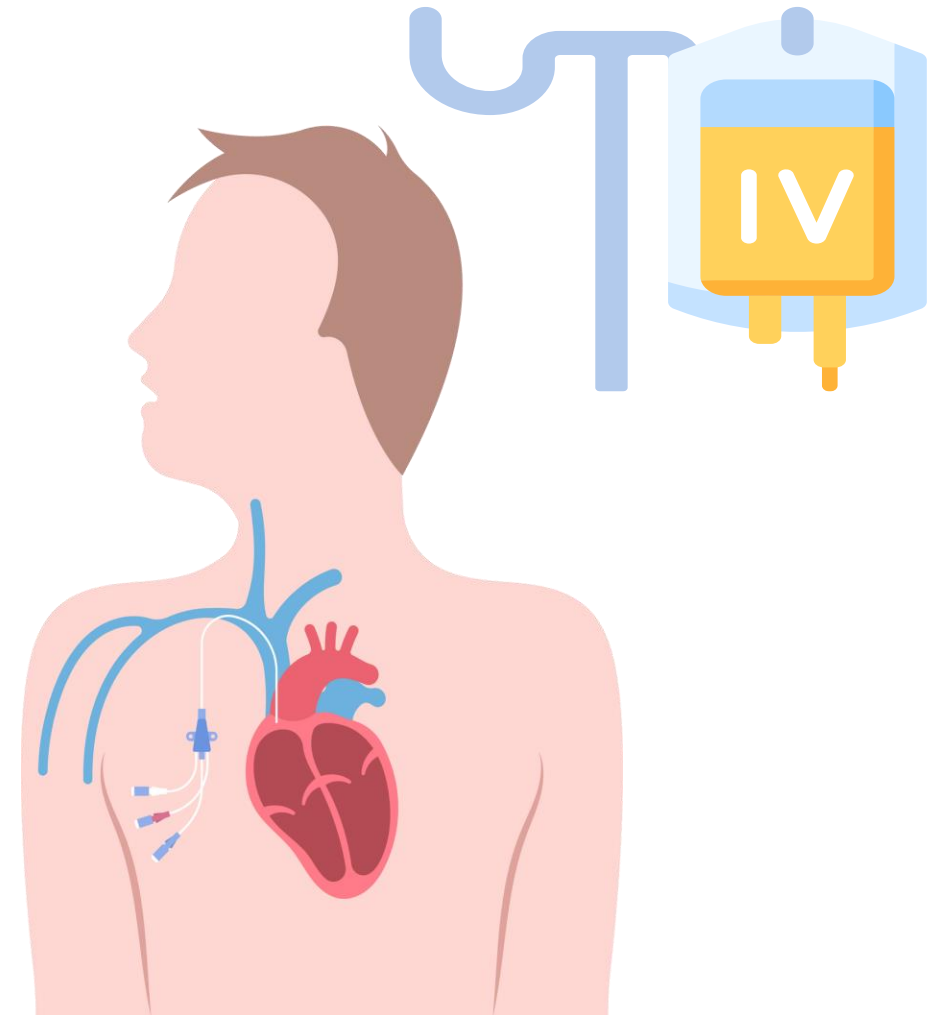
UNC
INSTITUTE FOR HEALTHCARE
QUALITY IMPROVEMENT

Parenteral Nutrition

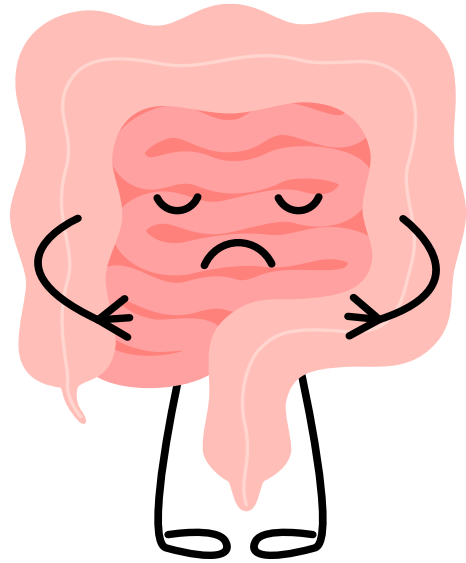
Nutrition given by central venous catheter

High alert medication with significant risks

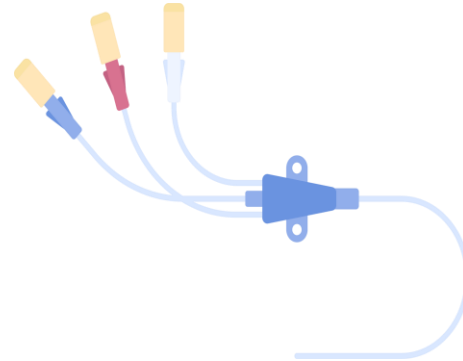
Resource-intensive (custom, sterile formula, specialized labor and ingredients, rigorous monitoring)



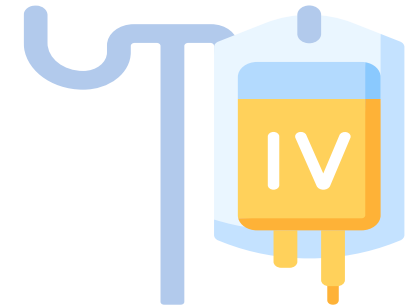
Inappropriate parenteral nutrition



PICC ordered



PN ordered

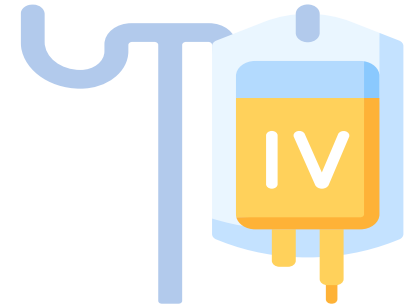
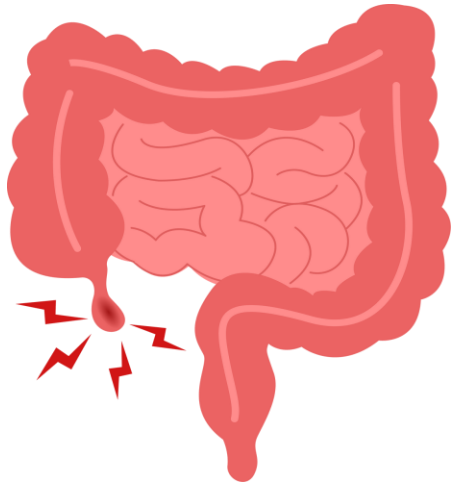


80 y.o. man h/o dementia
admitted with colitis

PICC line placed for PN

Observed in hospital for
3 weeks on PN

Delay in starting parenteral nutrition



19 days

PN started

66 y.o. man admitted with perforated appendicitis

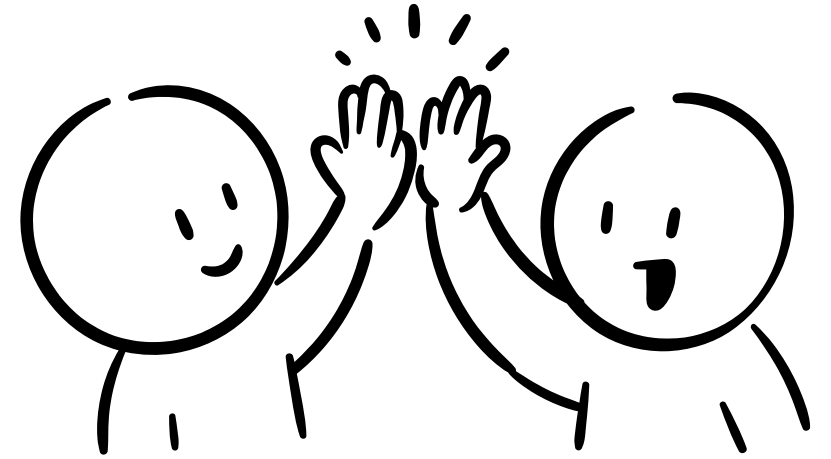
Impact of our IHQI Project

Reduced inappropriate use; prevented unnecessary lines

Reduced PN delays

Developed system to sustain progress

Aligned PN care at UNC with best practices

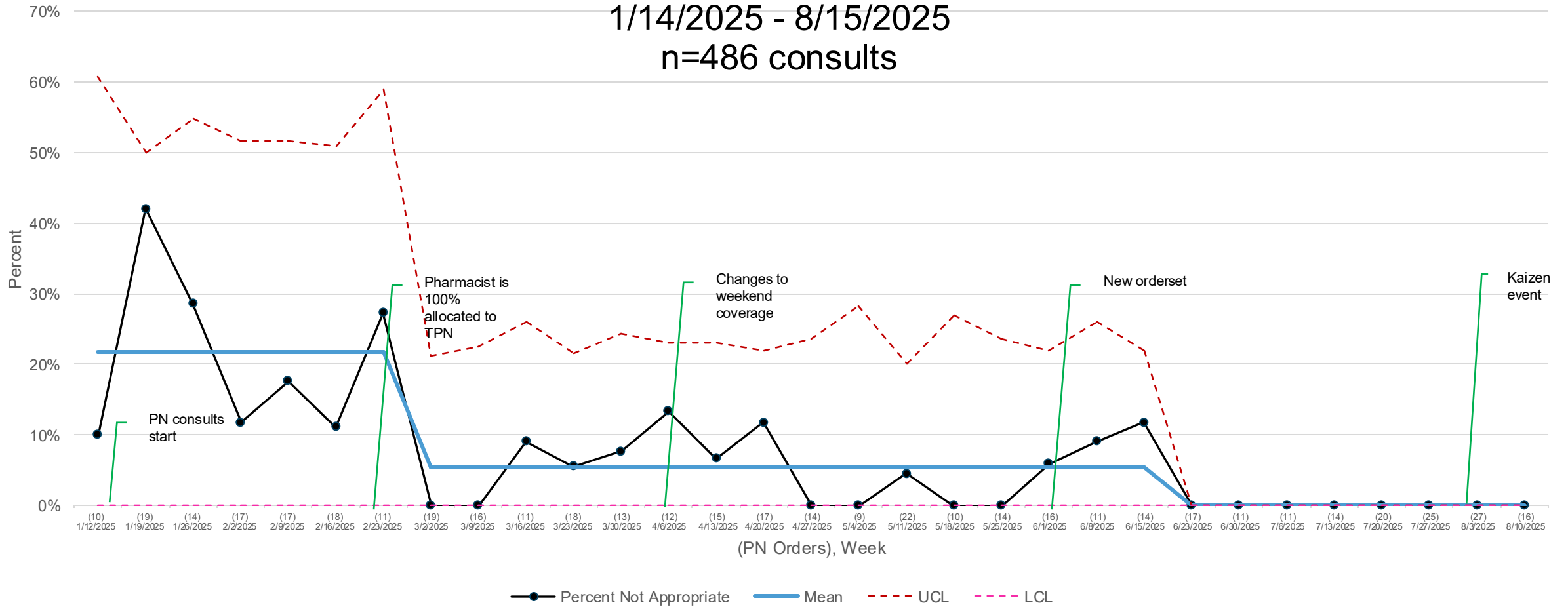


Inappropriate PN Starts

P-Chart

1/14/2025 - 8/15/2025

n=486 consults



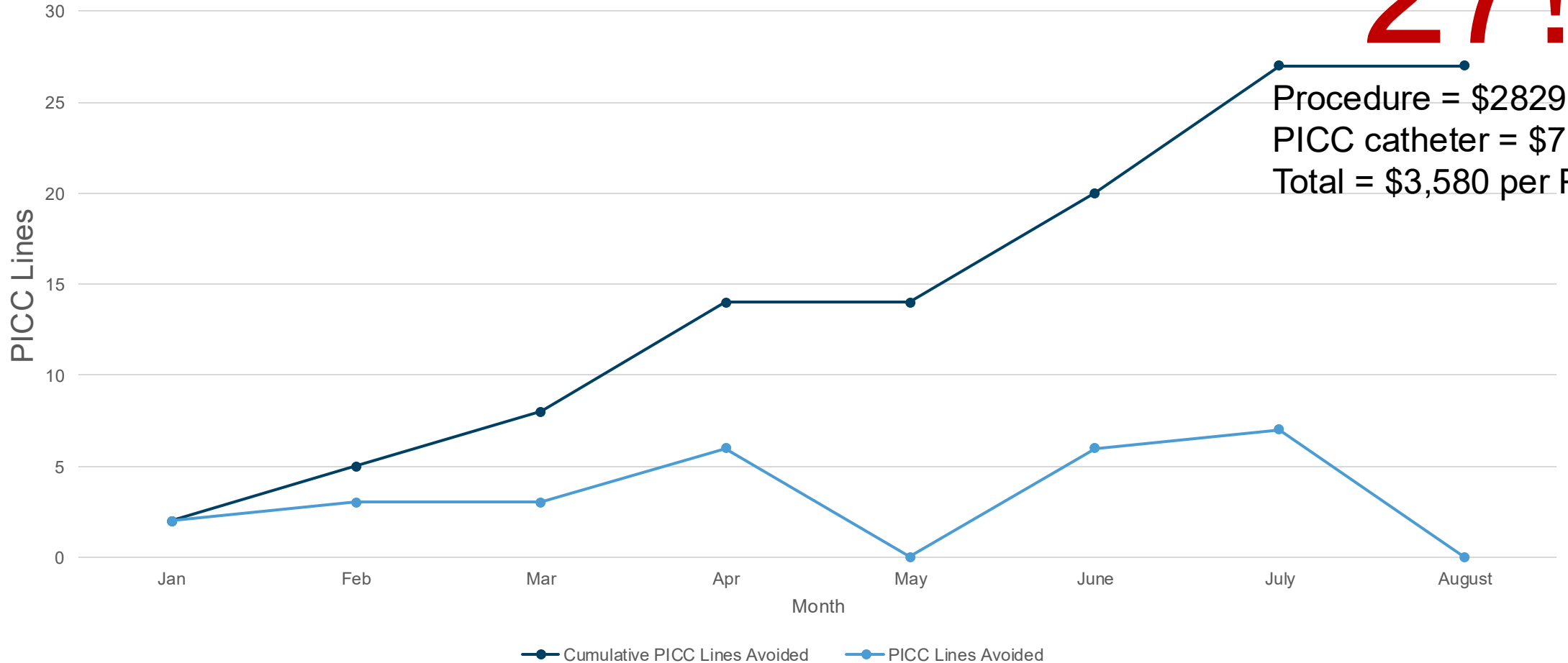
Cumulative PICC Lines Avoided

1/14/2025 - 8/15/2025

n = 486 consults

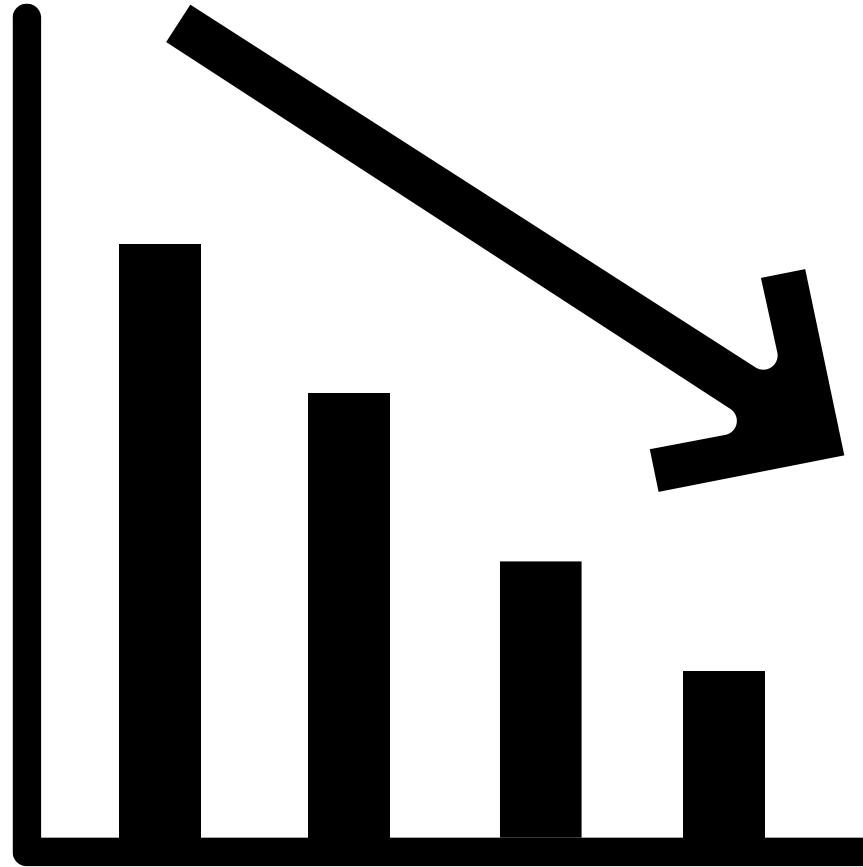
27!

Procedure = \$2829
PICC catheter = \$751
Total = \$3,580 per PICC



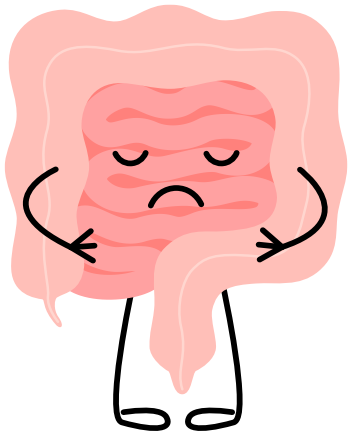
Delay in starting parenteral nutrition

Jan – Mar 2025:
21% per week

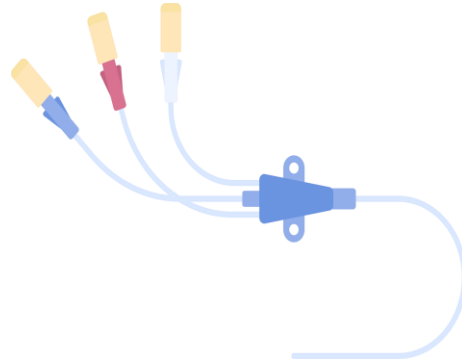


Mar - Aug 2025:
12% per week

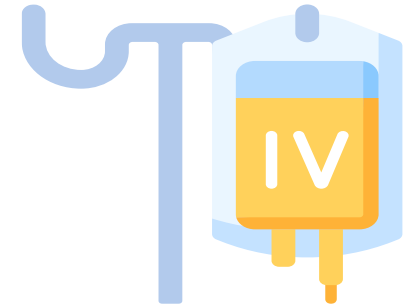
Historically at UNC



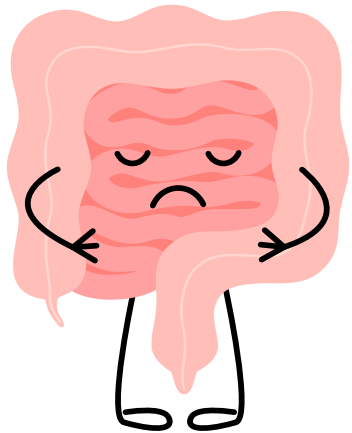
Line placed



PN ordered



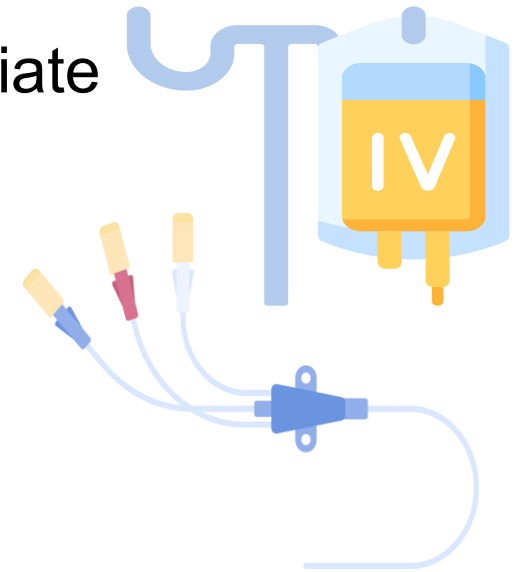
Implemented PN Consult



PN consult



If appropriate



UNC Adult PN Team Consult

Developed New Consult Order



Adult PN Order Panel (UNC/HBR)

✓ Accept

****Consults received prior to 1PM will be considered for same day start.****

Parenteral nutrition should be started:

- **ASAP** patients with moderate-severe malnutrition in whom oral/enteral nutrition not possible
- **3-5 days** patients nutritionally at risk and unlikely to achieve goal oral/enteral nutrition
- **Within 7 days** well-nourished patients unable to receive adequate oral/enteral nutrition



○ Step 1: Place consult to Parenteral Nutrition Team

Inpatient Consult to Adult Parenteral Nutrition (PN) Team

✓ Accept ✗ Cancel

Priority: Routine

Targeted Consulting Team:

! Indication for Parenteral Nutrition:

! Anticipate discharge with parenteral nutrition?

Comments: [+ Add Comments](#)

Reference Links:

- [myUNC Health Directory](#)

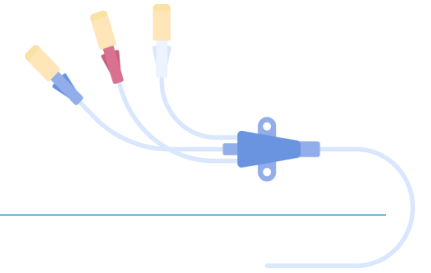
✓ Accept ✗ Cancel

○ Step 2: Initial Adult PN Orders (after evaluation by consult team)

! Next Required

✓ Accept

Created VAT team collaboration



PICC LINE TRIAGE NOTE

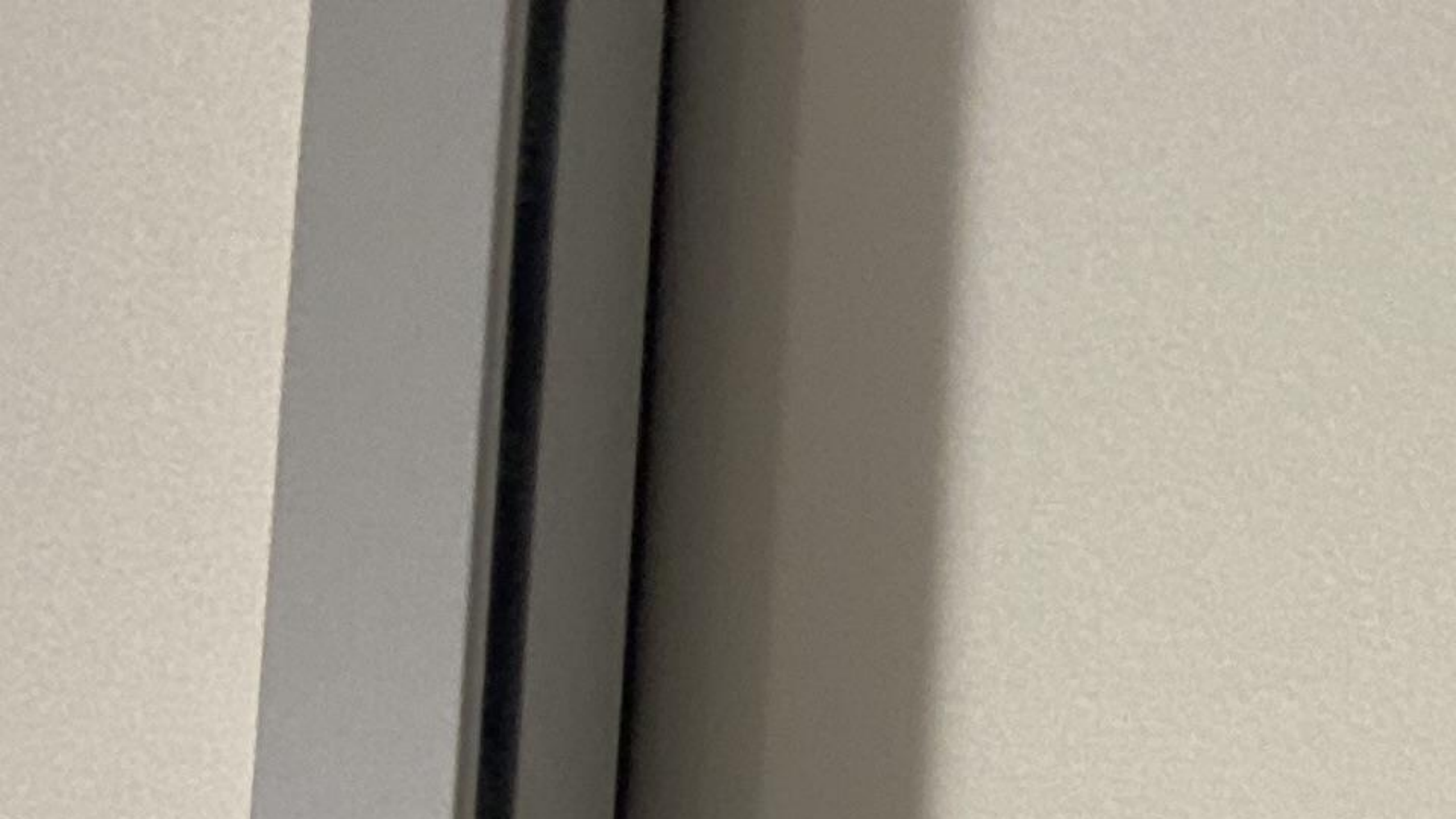
The Venous Access Team has received an order for PICC placement. This patient has been triaged and VAT will attempt bedside placement as schedule permits . Spoke with Gabrielle Sutton,MD about elevated WBC"S and vat was made aware that the pt was not infectious and no new blood cx's will be ordered at this time. I also made Emily Coscia aware of the TPN order and it was ok'd.



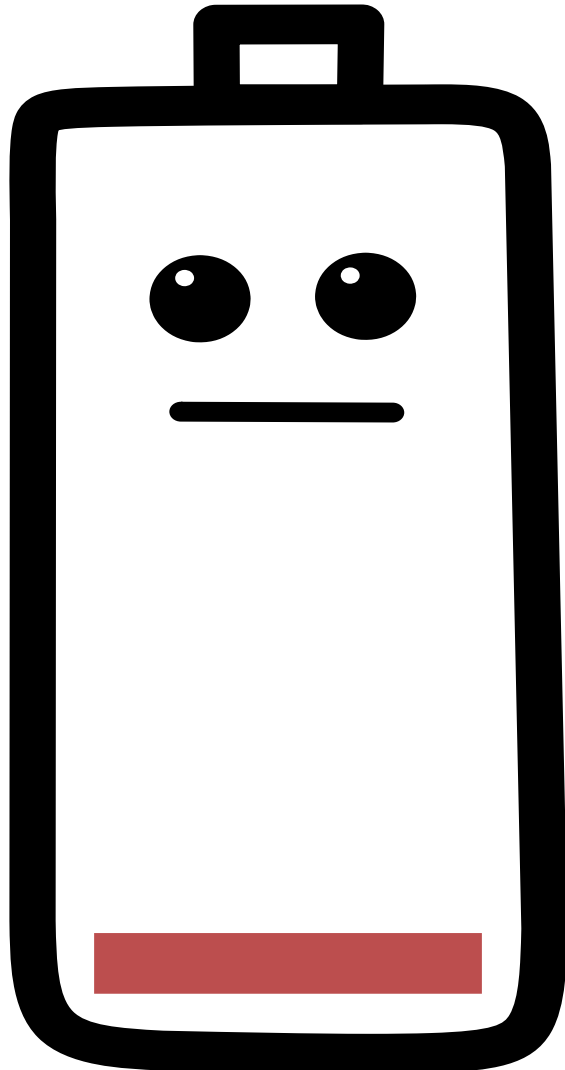
See PICC Specific History Flowsheet for additional details.

Thank You,

Tracey T Kelly, RN Venous Access Team 984-974-4334



Educated & Raised Awareness



Every patient needs a nutrition plan

**Addressing nutrition in the hospital
is associated with:**

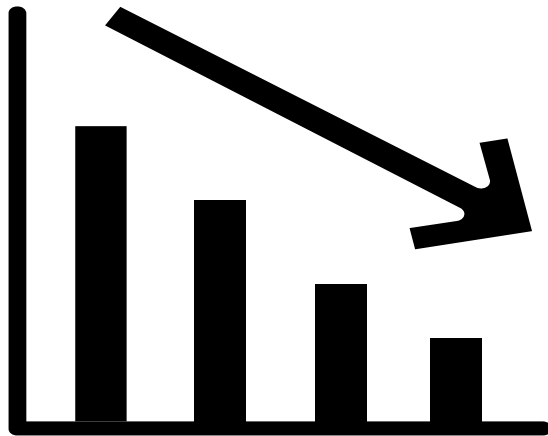
- Reduced risk of infection
- Shorter hospital stay
- Reduced risk of readmission
- Reduced risk of death
- Lower healthcare costs

Earlier NPO screening

Identified by NPO screen. Excellent work by **Brenna Nishan RD**

Excellent assessment by **Anna Salvador RD PhD** & follow up by **Liz Thompson RD**

Great advocacy by **Rebecca Fogle RD**



UNC Hospitals Registered Dietitians

Lessons Learned

IHQI empowered our team to transform care by teaching us how to assess needs, implement change, & learn from the process.



Acknowledgements

IHQI Team (Matt Huemmer, Shana Ratner, Kathryn Pier)

Forward Together Team (Udobi Campbell, John Downs, Clint Shouppe, Anne Spain, Stephanie Wilhoit-Reeves)

Venous Access Team (JJ Mack)

ISD (Nataliya Shuchalina)

Pharmacy (Laura Sipkes)

Nutrition (Jess McGee, Dan Lehman, Alyssa Nystrom)

GI Medicine (Nick Shaheen, Shifali Arora, Millie Long)

Surgery (Andrew Schneider, Jess Werdel, many surgery APPs)

Impact of our IHQI Project

Reduced inappropriate use; prevented unnecessary PICC lines

Reduced PN delays

Developed workflow to sustain progress

Aligned PN care @ UNC with best practices

