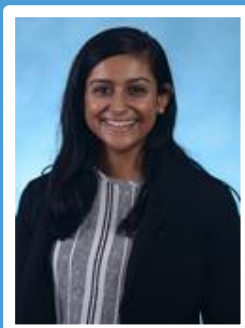


# Scholarly Concentration in Nutrition

Leadership: Alice Ammerman, DrPH, Director, Caitlin Hildebrand, MD, MPH, John Batsis, MD, Stephen Hursting, PhD, Tom Keyserling, MD, MPH

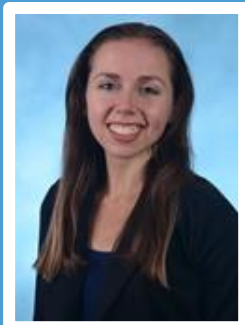


## Bina Amin

*Addressing Disparities within Medical Nutrition Therapy (MNT) use in Spanish-Speaking Patients: Raising Awareness of Piedmont Health MNT Services*

## Simrat Arora

*Food Insecurity Screenings in the Emergency Department*

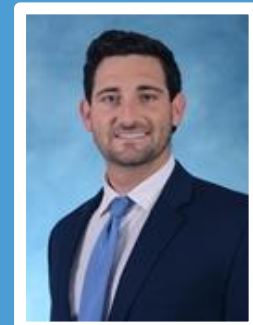


## Gabrielle Cooper

*Nutrient intake of individuals recovered from eating disorders*

## Cameron Kurz

*Associations between the gut microbiome and osteoarthritis: What role does diet play?*

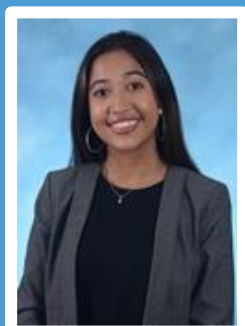
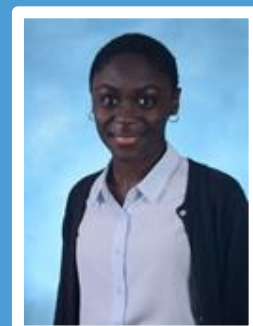


## Jason Lee

*Bridging Nutrition and Culture: Educating Preclinical Medical Students on Culturally Sensitive Dietary Approaches in the Latinx Community*

## Stephanie Ntim

*Patient perspectives on dietary screening and counseling tool in a clinical setting with limited resources*

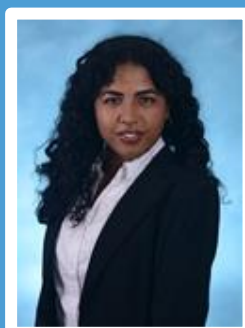
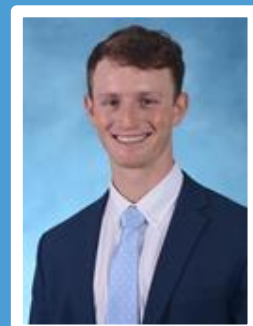


## Soha Raja

*The Association Between Food Insecurity and Parental Feeding Practices Prior To, and During, the COVID-19 Pandemic: A Scoping Review*

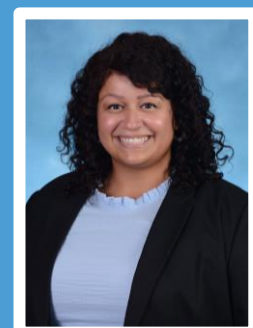
## Aaron Viser

*Malnutrition in Inflammatory Bowel Disease*



## Nidha Williams and Brianna Ramirez

*Culturally Adapted Nutrition Screening: Advancing Health Equity for North Carolina Migrant Farmworkers*



# Thursday, March 6<sup>th</sup>, 1:00-3:00 pm

Zoom: <https://unc.zoom.us/j/96512123767?pwd=1aiQGdsMNDfou7sYoesjRuUgv7Z4Me.1>

# 2025 Symposium