

CARE OF THE OLDER PATIENT SCP SYMPOSIUM



Tuesday, March 3, 2026



3:00 P.M. — 4:45 P.M.



Zoom

<https://unc.zoom.us/j/98487715965?pwd=aPz5TtiKvLkVJC7oCah00bLpz9GYYw.1>

Meeting ID: 984 8771 5965

Passcode: 521960



Leah Adams

"A toll on your body that affects so many other things: Dyadic Perspectives on the Functional Impact of Multiple Myeloma"

Mentor:
Emily Cetrone, MD



Nina Daneshvar

"Impact of Home Blood Pressure Resource Kits on Managing Hypertension Among Hispanic/Latino Patients"

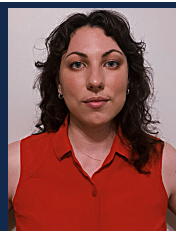
Mentor:
Emily Cetrone, MD



Obinna Ejimofor

"Improving Hypertension Health Outcomes Among Geriatric Hispanic Patients"

Mentor:
Meredith Gilliam, MD, MPH



Gabrielle Jones

"Improving Depression Detection in Geriatric Populations: A Comparison of the GDS-15 and PHQ-9"

Mentor:
Meredith Gilliam, MD, MPH



Jiwoo Kim

"Improving Functional Independence: A Patient-Centered Assistive Device Guide"

Mentor:
Meredith Gilliam, MD, MPH



Molly Powell

"Use of Blood-Based Biomarkers in Diagnosing Alzheimer's Disease in Adults with Mild Cognitive Impairment"

Mentor:
Meredith Gilliam, MD, MPH



Hyoungjun Sim

"Preoperative consideration of frailty and delirium in older adults"

Mentor:
Meredith Gilliam, MD, MPH



Christina Nutt

"Increasing RSV Protection for Aging Patients at Horizon Family Medicine"

Mentor:
Meredith Gilliam, MD, MPH



Jaewon Moon

"Investigating the Role of Socioeconomic Status Measures in Adults with Knee Osteoarthritis Receiving a Diet and Exercise Intervention"

Mentor:
Emily Cetrone, MD

Leadership:

- *Lindsay Wilson, MD, MPH, Director*
- *Meredith Gilliam, MD, MPH, Co-Director*
- *Claire Larson, MD, Co-Director*
- *Ellen Roberts, PhD, MPH, Co-Director*