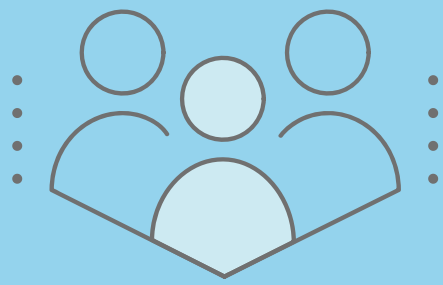


# Care of the Older Adult SCP

## Clinical

Get early clinical exposure to the field of geriatrics during your preclinical training by working with geriatrics fellows and faculty in **inpatient, outpatient, and residential living facilities**



Play an important role in an older adult's life through the **SCP Buddy Program**, which connects medical students with patients at UNC. Be first to know if new opportunities for community or clinical service arise.

## Service

## Research

Connect with UNC investigators in aging research looking for student mentees. Participate in the NIH-sponsored **MSTAR** summer program.



Meet other students (MS1-MS4) with diverse interests through SCP events, beginning with our welcome dinner sponsored by UNC's Center of Aging and Health!

## Community

## Curriculum

Attend lunchtime talks, grand rounds, and presentations from invited lecturers!

