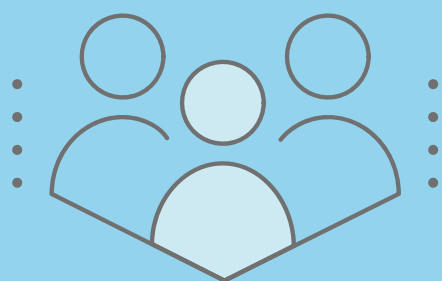


Care of the Older Patient

Scholarly Concentration Program

Clinical

Get early clinical exposure to the field of geriatrics during your preclinical training by working with geriatrics fellows and faculty in **inpatient, outpatient, and residential living facilities**



Play an important role in an older adult's life through the SCP **Buddy Program**, which connects medical students with patients at UNC. Be first to know if new opportunities for community or clinical service arise.

Service

Research

Connect with UNC investigators in aging research looking for student mentees. Participate in the NIH-sponsored **MSTAR** summer program.



Meet other students (MS1-MS4) with diverse interests through SCP events, beginning with our welcome dinner sponsored by UNC's Center of Aging and Health!

Community

Curriculum

Attend lunchtime talks, grand rounds, and presentations from invited lecturers!



UNC

SCHOOL OF MEDICINE

Center for Aging and Health

STRUCTURE

The Care of Older Patient Scholarly Concentration has elements in all phases of our medical school curriculum.

MS1-2

Complete at least one of the following:

- Special Topics on Aging course
- Medical Student Training for Aging Research (MSTAR) Program
- 20 hours of community service supporting older adults

MS3

Complete at least one of the following:

- Acute Care of the Elderly inpatient unit rotation
- Geriatric Psychiatry rotation
- Longitudinal geriatrics exposure during family medicine rotation in specialty clinic, CCRC, ALF, home visits, hospice, or SNF

MS4

Complete at least one four-week elective in:

- Hospice and Palliative Care
- Geriatric Outpatient Medicine
- Acting Internship in Geriatric Inpatient Medicine
- Geriatric Oncology
- Geriatric Emergency Medicine and Transitional Care

Annual

Attendance at minimum of 2 Geriatric Medicine events or lectures on SCP calendar

GOALS

THE CARE OF THE OLDER PATIENT CONCENTRATION HELPS BETTER PREPARE MEDICAL STUDENTS TO CARE FOR OLDER ADULTS IN THEIR PROFESSIONAL CAREERS, REGARDLESS OF WHAT CLINICAL SPECIALTY THEY ULTIMATELY CHOOSE TO PURSUE.

Goals of the scholarly concentration include:

- Provide an integrated 4-year elective program of geriatric experiences.
- Increase knowledge base and sensitivity to the issues of aging adults.
- Introduce the principles of inpatient, outpatient, nursing home, and home care for the elderly.
- Learn function, social, cognitive, and physical assessment skills.
- Facilitate research activities and critical thinking.