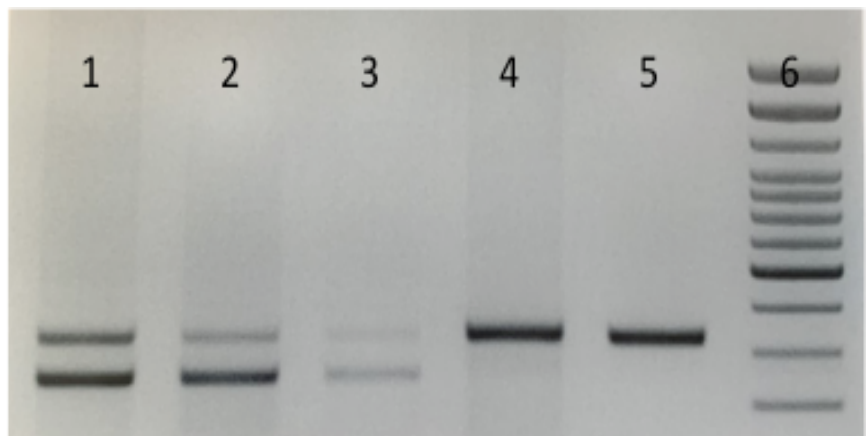


## MMRRC UNC – Genotyping Protocol

<b>MMRRC Strain ID</b>	50710
<b>MMRRC Strain Name</b>	C57BL/6NJ- <i>Kdelr2</i> <sup>em1(IMPC)Bay</sup> /Mmnc
<b>Gene Name(s)</b>	KDEL (Lys-Asp-Glu-Leu) endoplasmic reticulum protein retention receptor 2
<b>Breeding Protocol(s)</b>	Intra-strain Mating
<b>Protocol Date</b>	10/23/2019

	<b>1X</b>
ddH <sub>2</sub> O	12
5X Buffer	5.0
25mM MgCl <sub>2</sub>	2
10mM dNTPs	0.5
10 uM Primer 1	1
10 uM Primer 2	1
10 uM Primer 3	1
Taq	0.5
DNA	2

### PCR Reaction



#### **Thermal Cycler:**

Step 1: 94C, 5min  
 Step 2: 94C, 30sec  
 Step 3: 57C, 30sec  
 Step 4: 72C, 30sec  
 Step 2 to 4 Cycles: 30

1. Heterozygous Sample  
 2. Heterozygous Sample  
 3. Heterozygous Sample  
 4. Wild-type Sample  
 5. Wild-type Control  
 6. 100bp Marker (Invitrogen)

Step 5: 72C, 7min

**Taq: Apex Taq and Chromataq 5X Buffer**

Bands: WT: 422bp MUTANT: 340bp

Primer sequences 5' to 3': Primers are 10uM with respect to each primer

Kdel(50710)CF	cgtatagtgacgggttgtttca
Kdel(50710)WR	CAGGAACCACCAGGAAGTCC
Kdel(50710)MR	gccctgactgaaccttgag