

WHMC NEWSLETTER

DEC
2024



About Us!

The Women's Health Multidisciplinary Consortium is a student led organization here at UNC.

Our mission is to create a trainee-focused, unified community of faculty, clinicians, and researchers with a vested interest in women's health research and sex-specific pathologies.

Hot Off the Press!

Dr. Melinda Yates, the WHMC faculty advisor, and her MD/PhD student, Mikayla Bowen, recently published a paper highlighting the impact of **progestin-based IUDs** on women with **atypical endometrial hyperplasia** or **grade 1 endometrioid endometrial cancer**.

Access through your UNC Library Account [here!](#)

Bowen et al.; Long-Term Follow-up of Levonorgestrel Intrauterine Device for Atypical Hyperplasia and Early Endometrial Cancer Reveals Relapse Characterized by Immune Exhaustion. Clin Cancer Res 15 November 2024; 30 (22): 5073-5082.

Upcoming Events

05
Dec

Journal Club!

07
Dec

Hot Cocoa Social

5:00 PM

13
Dec

Hot Topic Seminar:
Sickle Cell Disease &
Women's Health

10:30 AM

22
Dec

Medical Scholarly
Concentration Program
Application closes!



Congrats to the team for making the cover of the journal, Clinical Cancer Research Volume 30, Issue 22



Presented by the
**Women's Health
Multidisciplinary Consortium**

Sickle Cell Disease & Women's Health

Friday, December 13th | 10:30 am - 11:30 am
Bondurant G010



Lauren Klein, MD

PhD Candidate in Nutrition at UNC Gillings |
Instructor of Pediatrics, Division of
Gastroenterology, Hepatology, and Nutrition
at Vanderbilt University Medical Center



Erica Sparkenbaugh, PhD

Assistant Professor | Pathology &
Laboratory Sciences

Hybrid Seminar - Join us on zoom!

Meeting ID: 536 439 7070

Passcode: WHMCHTS

Supported by:



The Women's Health Multidisciplinary
Consortium invites you to our




WINTER SOCIAL



December



7



Start 5 PM



Come gather with warm drinks,
pastries, and good company at

LANZA'S CAFE
601 W MAIN ST, CARRBORO

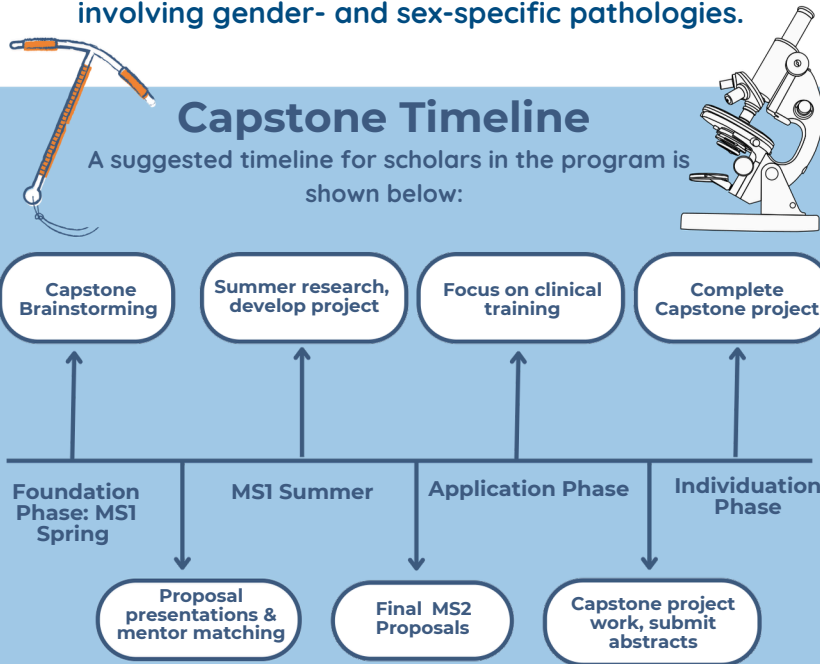


WOMEN'S HEALTH SCHOLARLY CONCENTRATION

For Medical Students

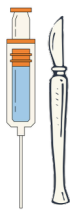


The purpose of the Women's Health Scholarly Concentration is to create a trainee-focused, unified community of medical students with a vested interest in conducting women's health research involving gender- and sex-specific pathologies.



Foundation Phase applicants will be expected to :

- Attend bi-weekly career development seminars
- Identify a capstone advisor for their final project in individualization phase
- Attend 2-4 WHMC led events per year
 - WHMC Hot Topic Seminars or WHMC Journal Club meetings
- Meet with SCP Directors and select a research mentor to begin women's health longitudinal project
- Meet with faculty mentor by MS2 Fall semester



Interested in applying?

scan the QR code below to fill out an application!

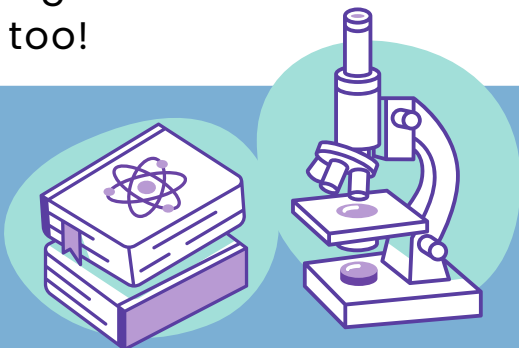


MEMBER INTERVIEW: WHMC ADVISOR DR. MELINDA YATES, PHD



Could you tell us a little about your background and how it shaped your academic interests?

I grew up in a blue-collar family in a rural, underserved area of Indiana. My mom filled our childhood with family stories of strong women overcoming challenges despite the odds being stacked against them. She loved sharing stories of our family and her childhood in the mountains of Kentucky, and she made it clear that she hoped for a different life for me and my sisters. Although it was completely unfamiliar territory, we were certain that a college education was the path to creating a better future. Being determined overachievers, my twin sister and I not only went to college but both earned PhDs, too!



While my path as a first-generation college student had some twists and turns, I knew I wanted to build my career in women's health research as my way to stand up for (and with!) women who are dismissed or diminished by others.

What research or other work in women's health are you involved in currently?

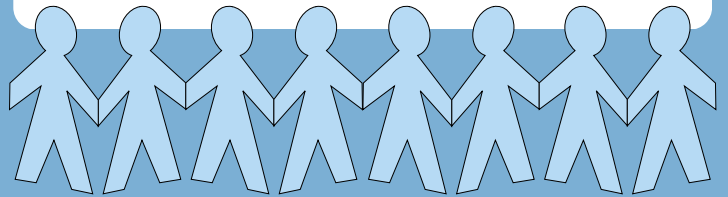
My lab is focused on defining the mechanisms of how endometrial cancer develops due to obesity or inherited cancer risk. Although it has long been known that endometrial cancer is tightly linked with obesity, we still don't understand the specific mechanisms. Progress in understanding this disease has been hampered by the misperception that it is a "good" cancer with invariably good prognosis. Further, many believe that it is a cancer with an "easy" fix via hysterectomy.

INTERVIEW, CONTINUED

Yet, the reality is that both the incidence and mortality of endometrial cancer are increasing at an alarming rate. Mortality from endometrial cancer is nearly double for Black women compared to White women, making this one of the most racially disparate cancers. Our lab is conducting parallel studies across cell/organoid cultures, rodent models, and human tissue-based studies to try to understand how cumulative stresses (hormones, obesity, environmental exposures, etc.) impact both the risk of endometrial cancer development and patient outcomes. Our goals are to improve outcomes for women with endometrial cancer and hopefully prevent women from becoming endometrial cancer patients in the first place.

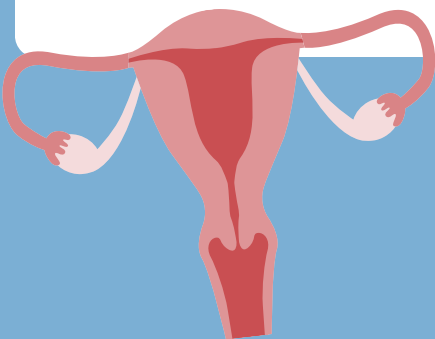
Who inspires you academically or otherwise?

Our students and trainees, of course! I am constantly amazed and impressed by the range of experiences and insights you bring to our classrooms, research, healthcare and beyond. Your energy, enthusiasm, empathy, compassion, and action are incredible.



**Dr. Yates is the faculty advisor
for the WHMC.**

**We are honored to have her on
our team! Thank you Dr. Yates!**



MEET THE CAROLINA WOMEN'S CENTER

The Carolina Women's Center (CWC) contributes to making the University of North Carolina at Chapel Hill a **more inclusive environment by ensuring there are no gender-based barriers to success and celebrating achievements towards gender equity**. We serve the entire campus community of students, faculty, staff, and postdoctoral fellows.

The CWC leads efforts and initiatives related to women and gender equity and serves as a hub for all related activities, information, and collaborations. Through partnerships at UNC-Chapel Hill and in the community, **we promote and advance equitable safety, well-being, empowerment, achievement, and leadership for people of all gender identities**.

Our **signature events include** Women's History Month programming, a book club and podcast discussion group, weekly community hours at our space, staff and faculty coffee hours, and an annual conference.

We invite you to join us at a program, **present your research at one of our Lunch and Learns**, apply to serve on our Advisory Board, host one of our Moxie Scholars, or stop by the center to study and chat all things gender equity.

The CWC is a place for you!



**Keep an eye out for upcoming events
with the CWC in the Spring!**



MONTHLY CALENDAR



DEC 2024

SUN	MON	TUE	WED	THU	FRI	SAT
1 Women's Health SCP applications are open!	2	3	4	5 Journal Club 5 - 7 pm	6	7 WHMC Winter Social 5 pm
8	9	10	11	12	13 Hot Topic Seminar 10:30 am	14
15	16	17	18	19	20	21
22 Medical Scholarly Concentration Applications Close	23	24	25	26	27	28
29	30	31	UNC WINTER BREAK			
				A cozy winter scene featuring a golden retriever lying down, a grey cat sitting, and a brick fireplace with a warm fire.		



Make sure to join us for our
Winter Get-Together!



COMMUNITY BULLETIN BOARD



Last month we had wonderful talks by **Preventive Medicine Resident Dr. Olivo-Holz MD, MPH, BCLC** who spoke on lactation, humanism, and social drivers of health, and **NC Diaper bank Founder Michelle Schaefer-Old** who told the story of the non-profit and highlighted the severe need for the service (1 in 2 families experience diaper need!).

We followed up with a volunteer session at the Diaper Bank, wrapping diapers and pull-ups - we wrapped over **13,000** in two hours! Thanks to all who joined - and be on the lookout for return visits next semester!



Let us know if you have research you would like us to promote!

JOURNAL SPOTLIGHT

If you're looking for a journal that publishes clinical case reports, check out this journal:



Case Reports in Women's Health

This journal publishes across a broad swath of clinical cases within women's health, including cancer.

Check it out [here](#)!



**THE WORD 'PUDENDUM'
(EXTERNAL GENITALIA,
COMMONLY FEMALE)
STEMS FROM "TO BE
ASHAMED"**

**Fact
OR
Fiction**

From the pudendal block to the pudendal nerve, this anatomical term remains a mainstay of medical language. The Greek term αἰδοῖον/aidoion was applied to both sexes genetalia by Hippocrates around 400 BCE, however the roots have since been primarily applied to female genitalia through terms like *membre honteux*: the shameful member, (French, the clitoris), and *schamlippen*: *shame lips* (German for labia). In 2019, pudendum was removed from the Terminologia Anatomica, however the term is still used medically.

Gross, R. E., & Veve, A. (2022). *Vagina obscura: an anatomical voyage*. First edition. New York, NY, W. W. Norton & Company.

For more: [NYT Article](#): Taking the 'Shame Part' Out of Female Anatomy

COMMUNITY ENGAGEMENT

<https://forms.gle/rhHNIKqXJoMbVxTJ9>

It's your WHMC communication engagement team here!

We're looking for your submissions! This is a space for a community bulletin – a place to look for research or work positions, fill professional needs, submit shoutouts, and submit photos to be used in future newsletters!

Kate Aberman



Sarah Rebbear



Kylie Hutchison



Share the WHMC listserv with others:



And visit our website [here](#)