

WHMC NEWSLETTER

OCTOBER
2025



About Us!

The Women's Health Multidisciplinary Consortium is a student led organization here at UNC.

Our mission is to create a trainee-focused, unified community of faculty, clinicians, and researchers with a vested interest in women's health research and sex-specific pathologies.

Upcoming Events

9

Oct

Hot Topics Seminar: 12 - 1pm
Medications in Pregnancy

18

Oct

NC Diaper Bank 9:30 - 11:30 am
Volunteering

24

Oct

Women's Health Journal 5 - 7pm
Club w/ Dr. Megan Rebuli

27

Oct

SOM Scholarly Conc. in 12 - 1pm
Women's Health Open House

Hot Off the Press!

New recommendations from the Women's Preventive Services Initiative (WPSI) aim to close critical gaps in breast cancer screening by ensuring that follow-up diagnostic care and patient navigation are covered alongside the initial screening.

Patients often face financial and logistical barriers to completing additional imaging, biopsies, or pathology after an abnormal result.

The updated guidance calls for insurance coverage across the entire screening-to-diagnosis pathway and recommends patient navigation services. Evidence shows navigation significantly improves both screening uptake and follow-up rates, potentially reducing delays in diagnosis and improving outcomes. If successful, the updated guidelines could strengthen early detection, reduce disparities, and make breast cancer screening more effective.



Read more [here!](#)

October is **Breast Cancer Awareness Month!** While this month is important for advocacy and education, many criticize "pinkwashing" trends. This term describes companies who use the pink ribbon to boost their sales, while their products are linked to increased risk for breast cancer.

Hot Topics in Women's Health Research Seminar Series

Presented by the Women's Health Multidisciplinary Consortium

Pregnancy and Prescriptions: Navigating Medication Use During Pregnancy



Kim Boggess, MD

Professor, Maternal Fetal Medicine, UNC

**Thursday, October 9, 2025
12:00 – 1:00 PM in Bondurant
2020**



Mollie Wood, PhD, MPH

Assistant Professor, Department of
Epidemiology, UNC



Hybrid Seminar: Join us on Zoom

Zoom link: <https://zoom.us/j/97758008848>

Meeting ID: 977 5800 8848 | Passcode: 445995

Supported by:



SCHOOL OF MEDICINE

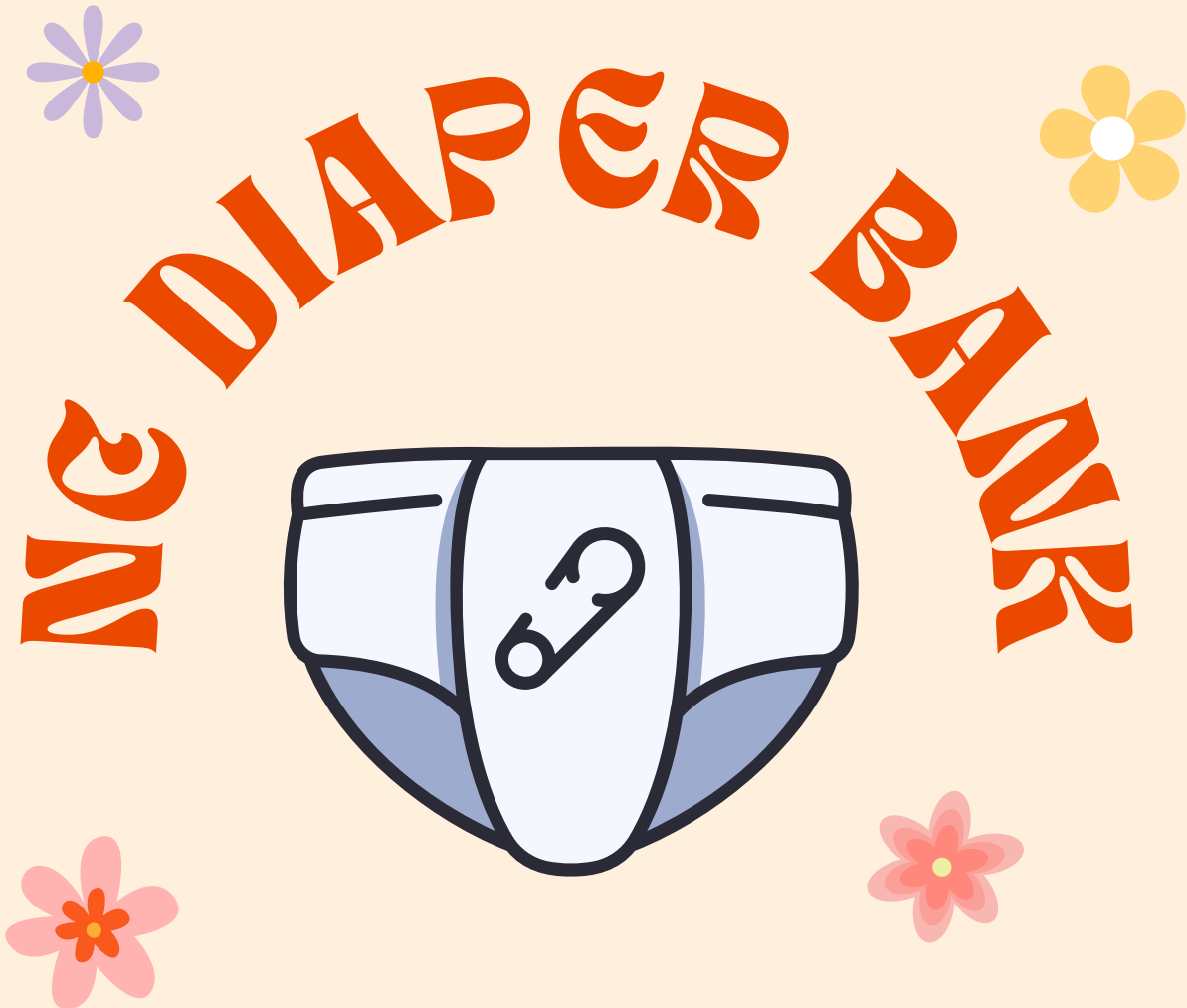
Center for Women's Health Research



SCHOOL OF MEDICINE

Pathology and Laboratory Medicine

HOSTED BY WHMC AND FAMILY MEDICINE INTEREST
GROUP



[HTTPS://GO.UNC.EDU/B4DBE](https://go.unc.edu/B4DBE)
437 Dimmocks Mill Rd

JOIN US

SEPT 6TH, 9:30 - 11:30AM

OCT 18TH, 9:30 - 11:30AM

NOV 8TH, 9:30 - 11:30AM

DEC 6TH, 9:30 - 11:30AM

AFFILIATED FACULTY INTERVIEW:

DR. LISA CAREY, MD, ScM, FASCO

RICHARDSON AND MARILYN JACOBS PREYER DISTINGUISHED PROFESSOR FOR BREAST CANCER RESEARCH
DEPUTY DIRECTOR OF CLINICAL SCIENCES, LINEBERGER COMPREHENSIVE CANCER CENTER



Could you tell us briefly about your background and what you're involved with now?

I graduated from Wellesley College, then received my medical degree from the Johns Hopkins University where I remained for residency in Internal Medicine followed by a fellowship in Medical Oncology and an advanced degree in Clinical Investigations. I came to Chapel Hill in 1998 to join the UNC faculty and Lineberger Comprehensive Cancer Center. I served as the Chief of the Division of Hematology and Oncology and Physician-in-Chief of the North Carolina Cancer Hospital from 2012–2020. In 2020, I became the Deputy Director of Clinical Science at Lineberger and, in 2025, the Chief Clinical Research Officer for UNC and their partners.

What research in women's health are you involved in currently?

I have a longstanding interest in the clinical application of laboratory findings in breast cancer, with a focused interest in different molecular subtypes of breast cancer. Currently, I'm a contact PI of an ~\$30 million ARPA-H award (federal grant for public/private partnership) dedicated to a large trials infrastructure for biomarker-driven novel therapies in metastatic breast cancer called TBCRC-EVOLVE. We will enroll about 700 patients to trials testing various drugs defined by the evolving biology of the cancer.

I continue to serve as the co-chair of the Alliance Breast Committee, which runs trials across the U.S. and Canada, and co-chair the executive committee of the Translational Breast Cancer Research Consortium, which runs scientifically complex smaller studies.

What is the most memorable research published since you became a physician and why?

The greatest advances have been in unwrapping the biology of cancers – building a greater understanding of the diseases' genetics, epigenetics and the importance of protein interactions through groundbreaking research such as The Cancer Genome Atlas publications over the past couple of years. In lung cancer, we have the most compelling example of how genomics is changing cancer care in our ability to identify abnormalities that can be targeted for treatment.

In breast cancer, these advances have led to the identifying the molecular subtypes of breast cancer beginning in 2000. We have developed genomic predictors of patient outcomes in hormone receptor-positive breast cancer, which allow us to safely omit chemotherapy in a significant number of patients. The development of HER2-targeted therapy, especially trastuzumab, which has turned the worst prognosis breast cancer subtypes into one of the best.

NEW podcast by a WHMC member!



Two Cultured is a science podcast created by a group of graduate students from UNC Chapel Hill, created with one mission: to make science more accessible and approachable for everyone. Each episode features conversations with scientists about their research—what they study, why it matters, and how it shapes the world around us—while also highlighting the human stories behind the science. With curiosity, warmth, and a sense of fun, our hosts Kavya and Akshi aim to break down barriers between the lab and the public, showing that science isn't just for scientists—it's for anyone who's curious about how the world works.

Listen on [SPOTIFY](#)

Into the Unknown: Autistic Females' Mental Health Experiences During Perimenopause



As part of the Autism, Mental Health and Perimenopause (AMP) study, the Harrop Lab has openings for student researchers interested in women's health and neurodiversity.

The AMP study uses a three-pronged, mixed-methods approach (online surveys, interviews, daily diaries) to characterize mental health challenges and health care experiences during perimenopause in autistic women.

More information regarding the study can be found [here](#).
If interested, please email Dr. Harrop at clare_harrop@med.unc.edu



Are you interested in extra pain medication during your IUD insertion?

2/3rd of volunteers in this research study will receive extra pain
medication for their IUD insertion

Who can participate?

- Women ages 18+
- Planning an IUD insertion
- Able to spend 3 hours for their appointment at UNC Hospitals-
Hillsborough campus

If chosen for the study, you will receive a giftcard for participating.

Contact our study coordinator to schedule your screening and IUD appointment!

(910) 683-0178

This study (IRB# 24-2276) has been reviewed by the UNC-CH Institutional Review Board



VOLUNTEERS NEEDED: MAAME INC.'S FIRST FOODS COMMUNITY PANTRY

WE NEED HELP WITH

- Helping organize and pack fresh produce boxes
- Distributing boxes to families in need
- Providing support during pantry events

INTERESTED IN JOINING US?

<https://maameinc.org/volunteer/>



Breaking the Silence: Domestic Violence Awareness

online workshop
Wednesday, 10/8/25, 12–1pm

October is **Domestic Violence Awareness Month**, a time to shed light on a pervasive issue that is too often trivialized and dismissed as a private matter. This webinar aims to break the silence around domestic violence by exploring the many forms abuse can take, challenging harmful myths, and offering practical tools to support survivors.



Workshop Objectives

At the end of this webinar, you will be able to:

- Define domestic violence and recognize tactics of abuse
- Identify different forms of abuse and barriers for survivors
- Challenge misconceptions about domestic violence, including why victims stay in abusive relationships
- Understand how to support survivors and prevent violence
- Describe local and national resources for survivors and their loved ones



[Register here](#)





SCHOOL OF MEDICINE

Biochemistry and Biophysics

Mary Ellen Jones Distinguished Women in Science Lecture

Is the protein folding problem really solved?

Probing hidden
conformations on the
energy landscape

Susan Marqusee

Professor, University of California Berkeley
Assistant Director, Directorate for Biological
Sciences at National Science Foundation



MORE INFO ON NEXT PAGE!

Tuesday, October 7th

11:00-12:00

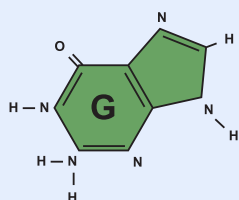
MBRB G-202

Additional career-
focused discussion
for trainees: 3-4 PM
in Marsico 5004!

MARY ELLEN JONES

DISTINGUISHED WOMEN IN SCIENCE LECTURE

The Biochemistry and Biophysics Department is excited to announce a special seminar from the distinguished **Dr. Susan Marqusee**, Eveland Warren Endowed Chair and Professor of Molecular and Cellular Biology at the University of California, Berkeley and leader of the Directorate for Biological Sciences of the National Science Foundation (NSF). Dr. Marqusee is a leader in the field of structural biology, where her lab focuses on elucidating the fundamental principles of protein folding encoded by amino acid sequence (read more about her recent work [here](#)). This exciting event is part of the Mary Ellen Jones Distinguished Women in Science Lecture Series.



Dr. Marqusee will join us for three events:

Tuesday, October 7th, 11 AM:

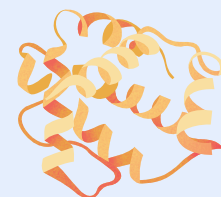
“Is the protein folding problem really solved?,” in *MBRB G-202*.

Tuesday, October 7th, 3-4 PM:

Career focused discussion with graduate students, co-hosted with the UNC Science Policy Advocacy Group (SPAG), in *Marsico 5004*.

Tuesday, October 7th, 5-6 PM:

Reception and meet and greet hosted by the Department of Biochemistry and Biophysics in *GMB lobby*.



Dr. Marqusee's visit is part of the Mary Ellen Jones Distinguished Women in Science Lecture Series, hosted by the Department of Biochemistry and Biophysics, to celebrate the accomplishments of extraordinary women in science, in the memory and honor of our own Dr. Mary Ellen Jones (1922-1996). **Mary Ellen Jones, PhD**, was an incredibly influential individual in the scientific community at UNC and world-wide. Alongside her contributions to the field of Biochemistry through her research on amino acid and pyrimidine metabolism, Dr. Jones was committed to the pursuit of gender equality in science and paved the way for many women in science in academia. Leading the Department of Biochemistry from 1978-1989, she was the first woman to chair a department at the UNC School of Medicine and was the first woman to hold an endowed chair at the University. Learn more about Dr. Jones [here](#).

We invite all students, faculty, and staff to join us for these enriching sessions. Don't miss this opportunity to learn from one of the leading figures in the field and be inspired by her remarkable journey!



MONTHLY CALENDAR



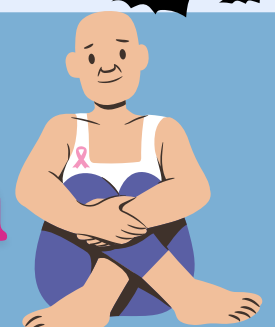
UNC
SCHOOL OF MEDICINE

OCTOBER 2025

SUN	MON	TUE	WED	THU	FRI	SAT
		30 The Yogurt Pump Fundraiser 	1	2	3	4
5	6	7 Mary Ellen Jones Lecture	8 Breaking the Silence Webinar 	9 Hot Topics Seminar: Meds in Pregnancy	10 World Mental Health Day	11
12 	13 Indigenous People's Day	14 Metastatic Breast Cancer Awareness Day	15	16	17 Men's Breast Cancer Awareness Day	18 NC Diaper Bank Volunteering
19	20	21	22	23 Journal Club with Dr. Megan Rebuli	24	25
26	27 Scholarly Concentration Open House	28	29	30 	31 HAPPY HALLOWEEN 	



Breast Cancer Awareness Month



COMMUNITY BULLETIN BOARD



Our community engagement team always loves meeting you at our tabling sessions! Here's a pic from one of our amazing team members tabling at Gillings!

Thank you to everyone who came out and volunteered with us at the NC Diaper Bank! Our awesome team was able to help pack 24,450 diapers!



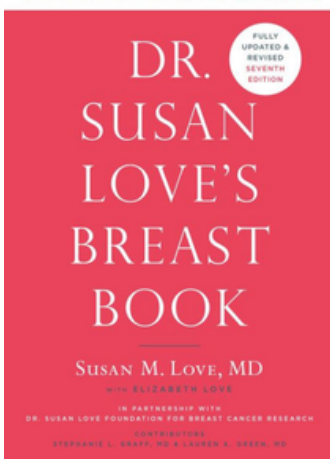
WHMC BOOK RECOMMENDATION OF THE MONTH

Dr. Susan Love's Breast Book

by Susan M. Love, MD



"A de facto bible for breast cancer patients." —NEW YORK TIMES

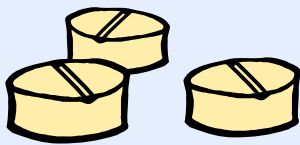


Available through [UNC library](#).

Have you or somebody you love recently been diagnosed with breast cancer? This book has been hailed as the “bible” for newly diagnosed patients. Dr. Susan Love was a retired surgeon who dedicated her life to advocating for breast cancer patients and preventative healthcare. Through advocacy and research, Dr. Love aimed to “not so much cure the disease as to vanquish it all together by isolating its causes and pre-empting them at a cellular level.” Her book, now on its 7th edition, helps patients navigate the scary and intimidating world of breast cancer diagnosis and treatment. The newest edition covers everything from treatments, pathology, genetics, risks for survivors, and prevention, all described thoroughly in easily digestible language.

Fact
or
Fiction
?

**TYLENOL HAS BEEN LINKED
TO AUTISM SPECTRUM
DISORDER**



A large Swedish cohort study published in JAMA looked at nearly 2.5 million children to assess whether acetaminophen use during pregnancy is linked to risks of autism, ADHD, or intellectual disability. In population-based models, acetaminophen use was modestly associated with increased risk of all three conditions, but when analyses controlled for family-level confounding variables using full sibling comparisons, no significant associations remained. The authors concluded that **previously observed links may largely be due to shared familial or genetic factors, rather than a direct causal effect of acetaminophen use during pregnancy.**

For more information:

[Acetaminophen Use During Pregnancy and Children's Risk of Autism, ADHD, and Intellectual Disability](#)
[AAP factsheet](#)

GET INVOLVED WITH THE WHMC!



Visit our website!

Submit your work, recent publications, upcoming events, and more **here** to be featured in our monthly newsletter!



Share the WHMC
listserv with others!

It's your WHMC
communication
engagement team
here!

We're looking for your submissions! This is a
space for a community bulletin – a place to
look for research or work positions, fill
professional needs, submit shoutouts, and
submit photos to be used in future newsletters!

Kate Aberman



Sarah Rebbeor



Kylie Hutchison



Mehnaz Shafquat



Emily Perou

