

# WHMC NEWSLETTER

MAY  
2026



## About Us!

The Women's Health Multidisciplinary Consortium is a student led organization here at UNC.

Our mission is to create a trainee-focused, unified community of faculty, clinicians, and researchers with a vested interest in women's health research and sex-specific pathologies.

## Upcoming Events

**04**  
May Spring Seminar Series w/  
Dr. Lyerly *8:30 - 9:30 am*

**08**  
May Hot Topics Seminar: *12 - 1 pm*  
Women's Mental Health

**14**  
May Obstetrics Anesthesia *5 - 6 pm*  
seminar w/ Dr. Mackenzie

**16**  
May NC Diaper Bank  
Volunteering *9:30 - 11:30 am*

Graduate Certificate Letter of Intent due  
**June 19th**

Abstract Submission for Women's Health  
Research Symposium open until **June 30th**

## Hot Off the Press!

A recent study published in JAMA investigated the variation in the tre gonorrhea/chlamydia treatment rates in pregnant and non-pregnant patients within emergency departments. Empiric treatment is the initial therapy before a diagnosis is confirmed, based off of clinical judgement. This cross-sectional study included over 4.9 million ED encounters with gonorrhea and/or chlamydia testing, and found that empiric treatment occurred in 11% of pregnant patients versus 38% of non pregnant patients. Empirical treatment was also more common among younger patients, those with noncommercial insurance, and those whose primary language was English across both study groups. These findings suggests a combination of factors at play, particularly the interaction of structural barriers to followup, guideline interpretation and communication rather than uniform provider biases. Further understanding of how empiric treatment aligns with risk and access to care can be used to create a more equitable management algorithm for STIs in ED settings.



Read more [here!](#)

# WHMC FACULTY INTERVIEW:

## Anne Lyerly, MD, MA

Practicing OB-Gyn | Social Medicine Professor

Co-founder of Obstetrics and Gynecology Risk Research Group



### Could you tell us briefly about your background and how it shaped your academic interests?

I majored in English in college and have always felt that humanities provide essential groundwork for medicine. In medical school, what drew me to obstetrics and gynecology was not science alone or even the opportunity to care for childbearing people, but the ways in which the field tugs on deep questions about what it means to be human, how gender and reproduction reflect and refract the values of society, and what is ethically required of those who provide care or conduct research at the edges of life. And yet when I faced these questions on L&D and in other clinical settings, I wasn't able to find a framework that did women justice. And since I love to write, bioethics seemed like a perfect space for me to weave together my commitment to women's health and my humanities orientation in a way that would be rewarding and impactful.

~

### Who inspires you academically or otherwise?

I am incredibly inspired by young people. First and foremost, I'm inspired by my children, who remind me about curiosity and creativity and wonder and compassion – and the importance of being a good example, even (perhaps especially) when that means slowing down. In a similar vein, I am also inspired by students and junior faculty. I've been around long enough to see young people I've mentored develop successful and independent careers and make important contributions to women's health and reproductive medicine – including by mentoring students of their own!

It is immensely rewarding to be a part of this process – especially knowing how I've been lifted by amazing scholars that have mentored me. Helping young people find their life passion and voice is one of best parts of being a professor.

~

### What research or other work in women's health are you involved in currently?

My current research extends a long-standing effort to ensure the interests of pregnant people are fairly represented in biomedical research and drug and device policies. Because pregnancy is so often an exclusion criterion for research, the evidence base for medications in pregnancy is inadequate, leaving policymakers, doctors and women themselves without the information they need to make informed decisions about treatment or prevention in pregnancy. I have led several projects that have explored the ethics of responsible inclusion of pregnant women in research and which have led to [ethics guidance for HIV](#) and other disease contexts. This summer the NIH-funded [PREPARE Project](#) (Promoting Equity for Pregnant Adolescents in Research) will launch guidance for the ethical inclusion of pregnant adolescents in HIV/Coinfections research, authored by the 44-member international and interdisciplinary PREPARE Working Group. I'm also co-editing a book with sociologist Miranda Waggoner (Rice University) titled *Research Ethics and Evidence Generation for Pregnancy Care – A Shifting Paradigm*. The book will include invited chapters by diverse authors who have contributed to advancing biomedical research in pregnancy, can speak to past and future challenges, or can contribute insight toward clearing the way for a more just and evidence-based future for pregnancy care.

# UNC WOMEN'S HEALTH RESEARCH SYMPOSIUM

## Collaborate, Innovate, & Unite: The Future of Women's Health Research at UNC

FEATURING KEYNOTE SPEAKERS



Samantha Meltzer-Brody,  
MD, MPH

Executive Dean of  
UNC School of Medicine



Crystal Schiller,  
PhD

Director of UNC Center For  
Women's Mood Disorders

September  
17th, 2026

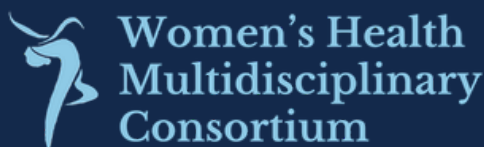
8:30 - 4:15 PM  
MOLECULAR BIOLOGY  
RESEARCH BUILDING



SUBMIT ABSTRACTS  
BY JUNE 30!



Hosted By



UNC Department  
of Pathology and  
Lab Medicine

TIBBS

UNC | Training Initiatives in Preclinical & Biological Science

With Partners

UNC Department of Obstetrics & Gynecology  
Center for Women's Health Research  
Carolina Women's Center  
Carolina Population Center  
Department of Maternal and Child Health



Sponsored by the Department of Pathology and Laboratory Medicine &  
The Women's Health Multidisciplinary Consortium



# GRADUATE CERTIFICATE IN WOMEN'S HEALTH RESEARCH

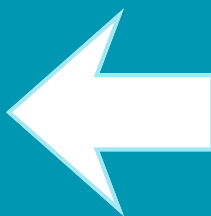
## APPLICATION OPEN NOW!

9 credits of coursework

Present at Women's Health Research Symposium

Monthly journal club

Submit a Letter of Intent by June 19<sup>th</sup> 2026  
to [msyates@unc.edu](mailto:msyates@unc.edu) to waive application fee



*More information &  
the application can  
be found here*

## APPLICATIONS DUE AUG 3<sup>RD</sup> 2026

Questions?  
Contact Program Director Dr. Melinda Yates ([msyates@unc.edu](mailto:msyates@unc.edu))



**David Rubinow, MD**

Distinguished Professor and Chair Emeritus, Psychiatry, UNC  
Founder, UNC Women's Mood Disorders Program



**Victoria Boggiano, MD MPH**

Assistant Professor, Family Medicine, UNC

## Hot Topics in Women's Health Research Seminar Series

Presented by the  
Women's Health  
Multidisciplinary Consortium

# Women's Mental Health: Mood Disorders and Beyond

Friday, May 8, 2026  
12 - 1 PM in Roper Hall 6310

Hybrid Seminar: Join us on Zoom

<https://unc.zoom.us/j/93611258769?pwd=bLflw1xSU0unnprwFapIRYyQbvD0Qy.1>

Meeting ID: 936 1125 8769 | Passcode: WHMC-HTS

To Zoom:



Supported by:



SCHOOL OF MEDICINE

Center for Women's Health Research



SCHOOL OF MEDICINE

Pathology and Laboratory Medicine

HOSTED BY WHMC AND FAMILY MEDICINE INTEREST  
GROUP



[HTTPS://GO.UNC.EDU/GK716](https://go.unc.edu/gk716)

## JOIN US

JAN 24<sup>TH</sup>, 9:30 - 11:30AM

FEB 21<sup>ST</sup>, 9:30 - 11:30AM

MAR 7<sup>TH</sup>, 9:30 - 11:30AM

APR 18<sup>TH</sup>, 9:30 - 11:30AM

MAY 16<sup>TH</sup>, 9:30 - 11:30AM

WHMC members!



# You're Invited

to attend

## the Spring Seminar Series on Professional Development in Women's Health Careers

**March 2<sup>nd</sup> - Adesola Akinkuotu, MD, MPH**

Maternal-Fetal Surgery, Fetal Care Center, Prenatal Counseling

**March 11<sup>th</sup> - Ben Chi, MD**

Global Women's Health

**March 16<sup>th</sup> - Clara Lee, MD, MPP**

Gender-Affirming Surgery, Breast Cancer Care

**March 30<sup>th</sup> - Lisa Rahangdale, MD, MPH**

HPV/Cervical Cancer Screening &  
Administrative/academic career path perspective

**April 6<sup>th</sup> - Johanna Quist-Nelson, MD**

Maternal Cardiovascular Disease

**April 27<sup>th</sup> - Lauren Kucirka, MD, PhD**

Epidemiology and Data Registries

**April 29<sup>th</sup> - Divya Mallampati, MD, MPH**

Navigating Health Policy and Funding

**May 4<sup>th</sup> - Anne Lyerly, MD, MA**

Pregnancy Research Clinical Trials and Ethics



## Roper Hall room 3112, 12-1pm

organized by the Women's Health Scholarly Concentration



**maame**

Mobilizing African American Mothers through Empowerment



# VOLUNTEERS NEEDED: MAAME INC.'S FIRST FOODS COMMUNITY PANTRY

## WE NEED HELP WITH

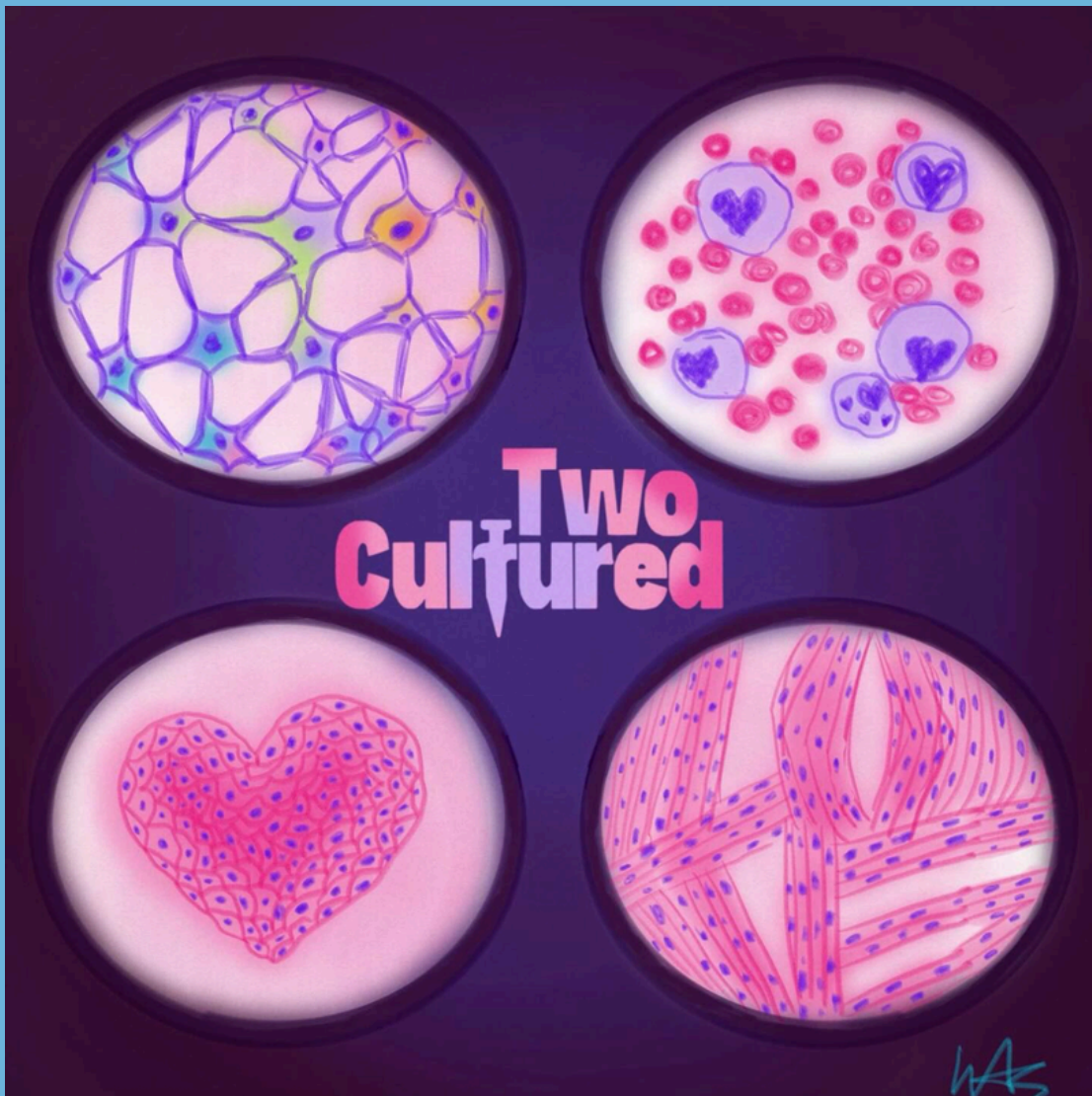
- Helping organize and pack fresh produce boxes
- Distributing boxes to families in need
- Providing support during pantry events

## INTERESTED IN JOINING US?

<https://maameinc.org/volunteer/>



check out this podcast hosted by a WHMC member!



**Two Cultured** is a science podcast created by a group of graduate students from UNC Chapel Hill, created with one mission: to make science more accessible and approachable for everyone. Each episode features conversations with scientists about their research—what they study, why it matters, and how it shapes the world around us—while also highlighting the human stories behind the science. With curiosity, warmth, and a sense of fun, our hosts Kavya and Akshi aim to break down barriers between the lab and the public, showing that science isn't just for scientists—it's for anyone who's curious about how the world works.

Episode 9 out now! Listen on [SPOTIFY](#) or [APPLE MUSIC](#)

# Into the Unknown: Autistic Females' Mental Health Experiences During Perimenopause



As part of the Autism, Mental Health and Perimenopause (AMP) study, the Harrop Lab has openings for student researchers interested in women's health and neurodiversity.

The AMP study uses a three-pronged, mixed-methods approach (online surveys, interviews, daily diaries) to characterize mental health challenges and health care experiences during perimenopause in autistic women.

More information regarding the study can be found [here](#).  
If interested, please email Dr. Harrop at [clare\\_harrop@med.unc.edu](mailto:clare_harrop@med.unc.edu)



## Are you interested in extra pain medication during your IUD insertion?

2/3rd of volunteers in this research study will receive extra pain  
medication for their IUD insertion

### Who can participate?

- Women ages 18+
- Planning an IUD insertion
- Able to spend 3 hours for their appointment at UNC Hospitals-  
Hillsborough campus

If chosen for the study, you will receive a giftcard for participating.

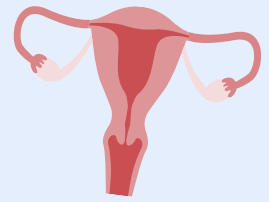
Contact our study coordinator to schedule your screening and IUD appointment!

**(910) 683-0178**

# Job Opening: Clinical Research Scientist (PhD) in Longevity and Women's Health



Hours & Location: Part-time, Remote



## About Us:

Women's Health Platform includes a concierge medical practice whose mission is to reimagine healthcare for women 35+ and dramatically improve women's health around the menopause transition. We are expanding our clinical research team and seeking a PhD-level scientist with expertise in women's health, longevity, and translational research to join our multidisciplinary team of in-house MDs and PhDs, as well as our Medical Advisory Board led by Dr. Stephanie Faubion at Mayo Clinic.

## Position Summary:

The Clinical Research Scientist will play a central role in advancing our work on optimizing women's health spans. Responsibilities will include directly supporting patient-facing needs by answering clinical questions, conducting supplement and personal care product reviews, and performing advanced literature analyses to inform personalized care recommendations; designing clinical protocols for our medical practice in collaboration with our team of front line physicians to translate the latest research into clinical practice; conducting in-depth reviews of emerging longevity therapeutics and interventions; and evaluating and vetting diagnostic tools and technologies for integration into patient care. The scientist will also contribute to scientific publications and collaborate closely with a multidisciplinary team of MDs, PhDs, and external research partners to translate findings into clinically actionable insights.

## Qualifications:

- Ph.D. in health sciences, physiology, epidemiology, biomedical sciences, biostatistics, pharmacology, or a related discipline
  - Demonstrated expertise in women's health and/or longevity research
  - Ability to translate complex findings into clinically actionable insights
- Expertise in leveraging AI tools for literature reviews, research, and writing
  - Expertise in quantitative research methods
- Ability to analyze clinical and biomarker data using advanced statistical methods



## Compensation:

Commensurate with experience.



## How to Apply:

Please submit a cover letter, one-page resume, and brief overview of availability to [marina@erawomenshealth.com](mailto:marina@erawomenshealth.com). Applications will be reviewed on a rolling basis until the position is filled



# MONTHLY CALENDAR



## MAY 2026

SUN	MON	TUE	WED	THU	FRI	SAT
					1	2
3	4 Spring Seminar Series w/ Dr. Lyerly	5	6	7	8 Hot Topics Seminar: Women's Mental Health	9 GRADUATION DAY
10	11	12	13	14 Obstetrics Anesthesia seminar	15	16 NC Diaper Bank volunteering
17 Happy Mothers Day	18	19	20	21	22	23
24	25 happy memorial day	26	27	28	29	30
31						

# CONGRATS

# GRADUATES!

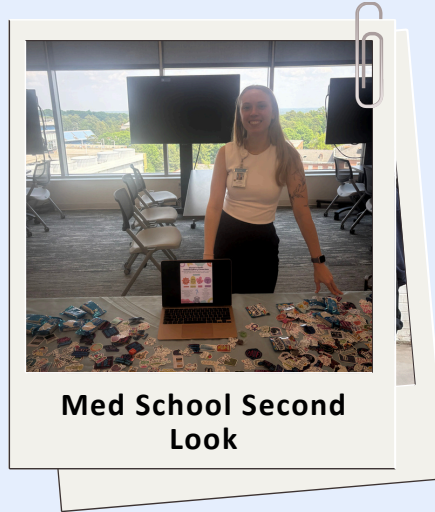




# COMMUNITY BULLETIN BOARD



Fundraising at Purple Bowl



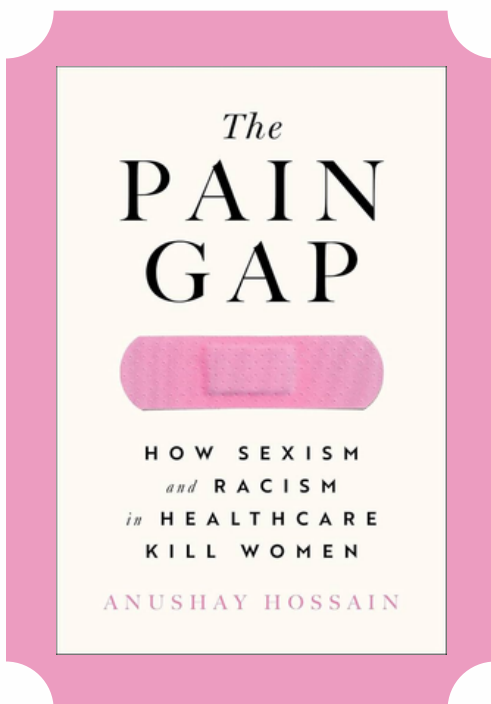
Med School Second Look



April Hot Topics Seminar

Thank you everyone for a wonderful year, and all the support of the WHMC community!

## WHMC BOOK RECOMMENDATION OF THE MONTH

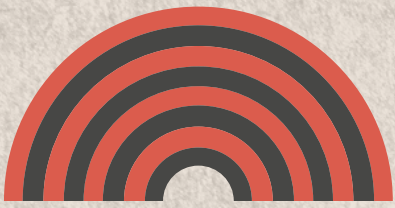


### The Pain Gap:

How Sexism and Racism in Healthcare Kill Women

by Anushay Hossain

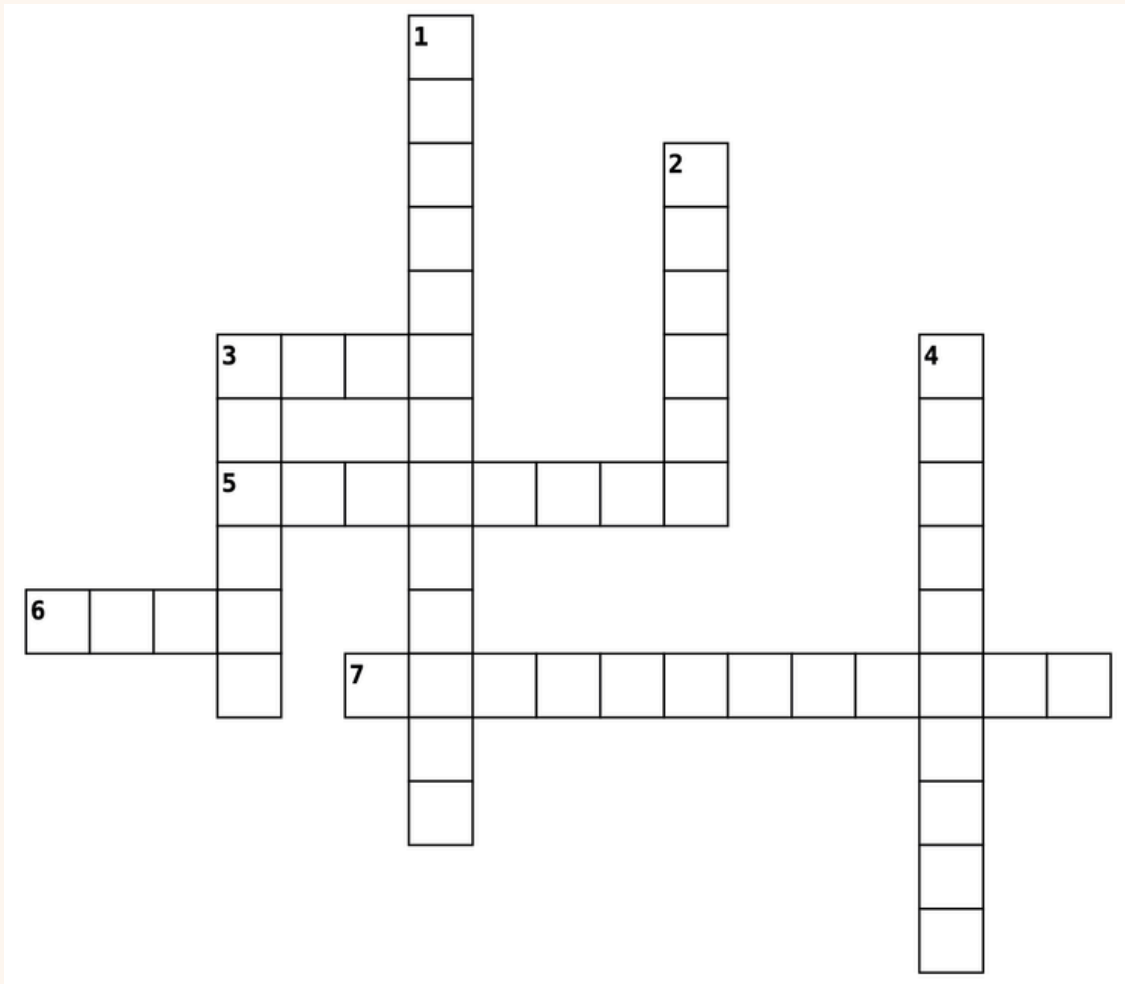
As an immigrant, Hossain never expected that giving birth in an American hospital could be dangerous. Prenatal healthcare was limited in her home country of Bangladesh. Thirty hours into labor, Hossain spiked a fever of 104 and bought herself a ticket to the OR for an emergency c-section. This book weaves together the experiences of women of color with statistics on healthcare disparities. Hossain calls on women to use their “hysteria” to fight the system and demand change for future generations.



# MAY 2026 CROSSWORD



This Month's Theme: May is Women's Health Month! Test your knowledge surroundings general screenings and conditions related to women's health.



Answers: 1. Endometriosis 2. Salmon 3DOWN. Breast 3ACROSS. Blue  
4. Depression 5. Estrogen 6. PCOS 7. Osteoporosis

## Hints

### ACROSS

3. Awareness color for maternal mental health in May
5. Hormone that fluctuates during perimenopause, affecting mood and sleep
6. Condition marked by irregular periods and hormonal imbalance, affecting 1 in 10 women
7. Condition common in women after menopause causing bone weakening

### DOWN

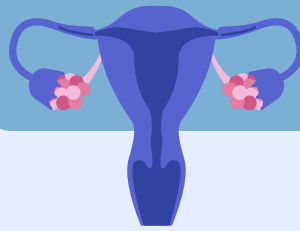
1. Condition where uterine-like tissue grows outside the uterus
2. Food in the fish family that boosts fertility
3. Self-exam recommended monthly to check for lumps.. where?
4. Mental health condition affecting 1 in 5 women postpartum



Fact  
or  
Fiction  
?

THE HPV VACCINE  
IS ONLY FOR  
TEENAGERS

While the HPV vaccine is most effective when given around the ages of 11-12, it is not limited to that age range. In 2018, the FDA expanded its approved age range from 26 to 45 years, which means adults in their 30s and 40s can still benefit. However, it is important to speak to the clinician first, because some adults ages 27 through 45 have already been exposed to HPV, and the vaccine would not be as beneficial.



Read more [here!](#)

## GET INVOLVED WITH THE WHMC!



Visit our website!

Submit your work, recent publications, upcoming events, and more [here](#) to be featured in our monthly newsletter!



Share the WHMC listserv with others!

It's your WHMC communication engagement team here!

We're looking for your submissions! This is a space for a community bulletin – a place to look for research or work positions, fill professional needs, submit shoutouts, and submit photos to be used in future newsletters!

Suhani Ranjan Kate Aberman

Sarah Rebbeor

Kylie Hutchison

Mehnaz Shafquat Emily Perou

