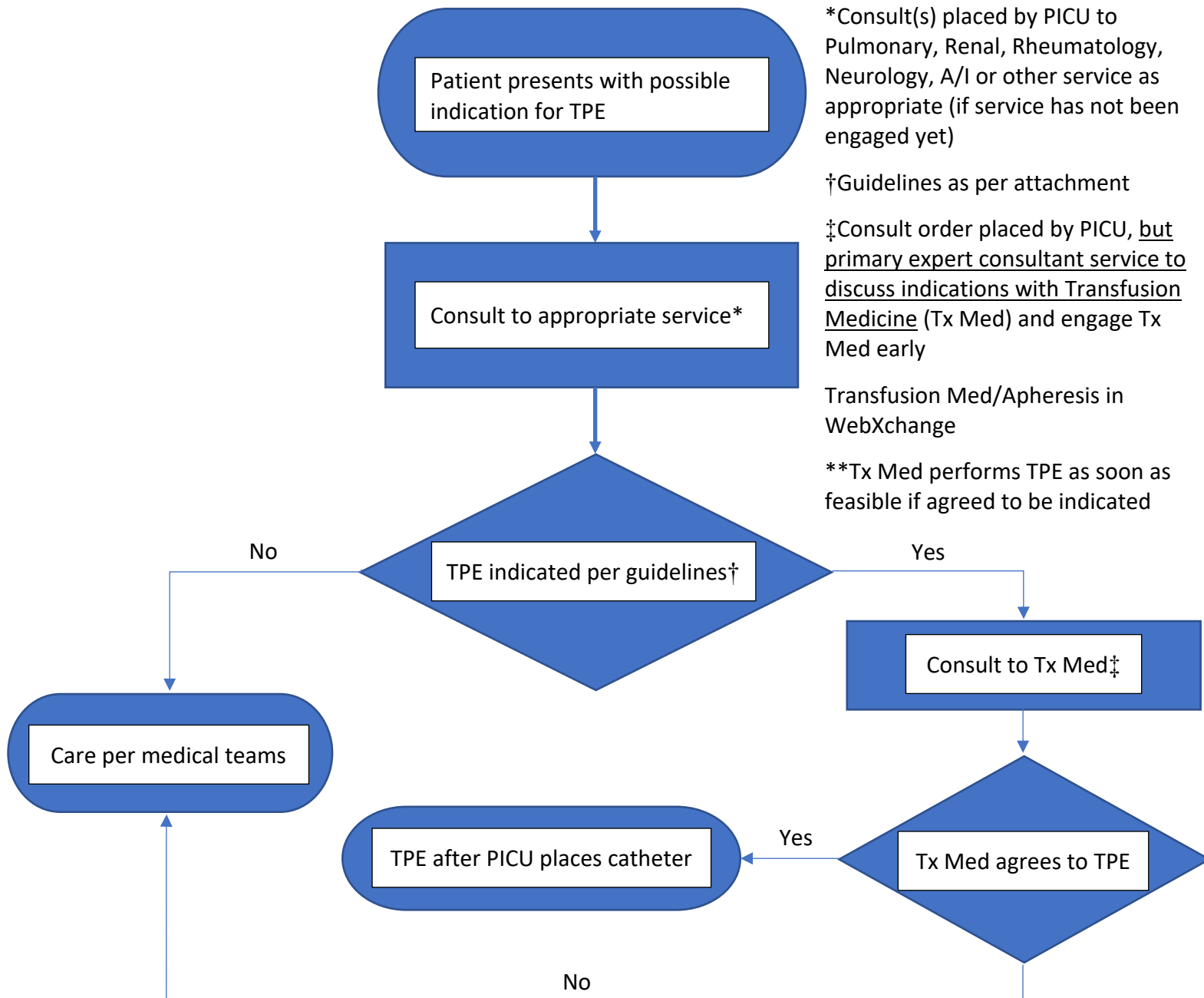


PROCESS FOR THERAPEUTIC PLASMA EXCHANGE (TPE) APPROVAL IN SELECT PATIENTS



Indications for Therapeutic Plasma Exchange (TPE)

1. Vasculitides (Primary and Secondary)
 - a. ANCA-associated vasculitis (AAV) with diffuse alveolar hemorrhage (DAH) and/or rapidly progressive glomerulonephritis (RPGN) [encompassing granulomatosis with polyangiitis (GPA) and microscopic polyangiitis (MPA) and renal-limited]
 - b. Idiopathic pulmonary capillaritis with DAH/ANCA negative vasculitis with DAH
 - c. Anti-glomerular basement membrane (GBM) disease with DAH and/or RPGN
 - d. Other vasculitis***
2. Systemic lupus erythematosus
 - a. DAH
 - b. Thrombotic microangiopathies (TMAs)
 - c. CNS disease
 - d. Others***
3. Hemolytic uremic syndrome (atypical HUS, short course)***
4. Thrombotic thrombocytopenic purpura
5. Autoimmune inflammatory neurological disease
 - a. Autoimmune encephalitis (***in antibody-negative cases)
 - b. Neuromyelitis optica (NMO)-spectrum of disorders
 - c. Myelin oligodendrocyte glycoprotein antibody-associated disease (MOGAD)
 - d. Acute demyelinating encephalomyelitis (ADEM)
 - e. Idiopathic acute inflammatory demyelinating CNS syndromes (to include but not limited to idiopathic optic neuritis*** and idiopathic transverse myelitis)
 - f. Autoimmune epilepsy***
 - g. Acute inflammatory demyelinating polyneuropathy/Guillain-Barré syndrome***
 - h. Chronic inflammatory demyelinating polyneuropathy
 - i. Polyneuropathy with monoclonal gammopathies of undetermined significance
 - j. Myasthenia gravis
 - k. Multiple sclerosis***
6. Catastrophic antiphospholipid syndrome
7. Recurrent FSGS
8. Solid organ transplant rejection
9. Thrombocytopenia-associated multi-organ failure (TAMOF)***
10. ECMO-associated hemolysis***

***may require multidisciplinary consultation/discussion amongst team members

References

- Wright E, Dillon MJ, Tullus K. Childhood vasculitis and plasma exchange. *Eur J Pediatr.* 2007 Feb;166(2):145-51.
- Pham HP, Staley EM, Schwartz J. Therapeutic plasma exchange – a brief review of indications, urgency, schedule, and technical aspects. *Transfus Apher Sci.* 2019 June; 58 (3):237-246.
- Savransky A, Rubstein A, Huaman Rios M. Prognostic indications of improvement with therapeutic plasma exchange in pediatric demyelination. *Neurology.* 2019; 93: e2065-e2073.
- Cortese I, Chaudhry V, So YT. Evidence-based guideline update: Plasmapheresis in neurologic disorders. *Neurology.* 2011; 76: 294-300.
- Padmanabhan A, Connelly-Smith L, Aqui N, et al. Guidelines on the use of therapeutic apheresis in clinical practice-evidence-based approach from the writing committee of the American Society for Apheresis: The eighth special issue. *J Clin Apher.* 2019; 34: 171-354.