

Patients UNABLE to be evaluated by Tele-Provider

- < 5 years old
- Unable to obtain vitals
- Chest pain
- On chemotherapy, transplant hx, immunocompromised
- On dialysis, have indwelling line or device (LVAD)
- SNF or DOC
- Seeking drug rehab/detox
- Homeless or seeking shelter
- Referred by RDC for ED evaluation



Tele-appropriate visit



- Non-respiratory/Non-COVID ESI Level 5 or Medication refill

Vitals Inappropriate for Tele-Provider

- Temp >103
- RR >24
- SpO2 <95%
- HR >120 (5 - 12 yo >130)
- SBP <100 and >190 (5 - 12 yo < 90)
- Altered mental status

CONTACT TIMES AND NUMBERS



7 AM - 2:30 PM

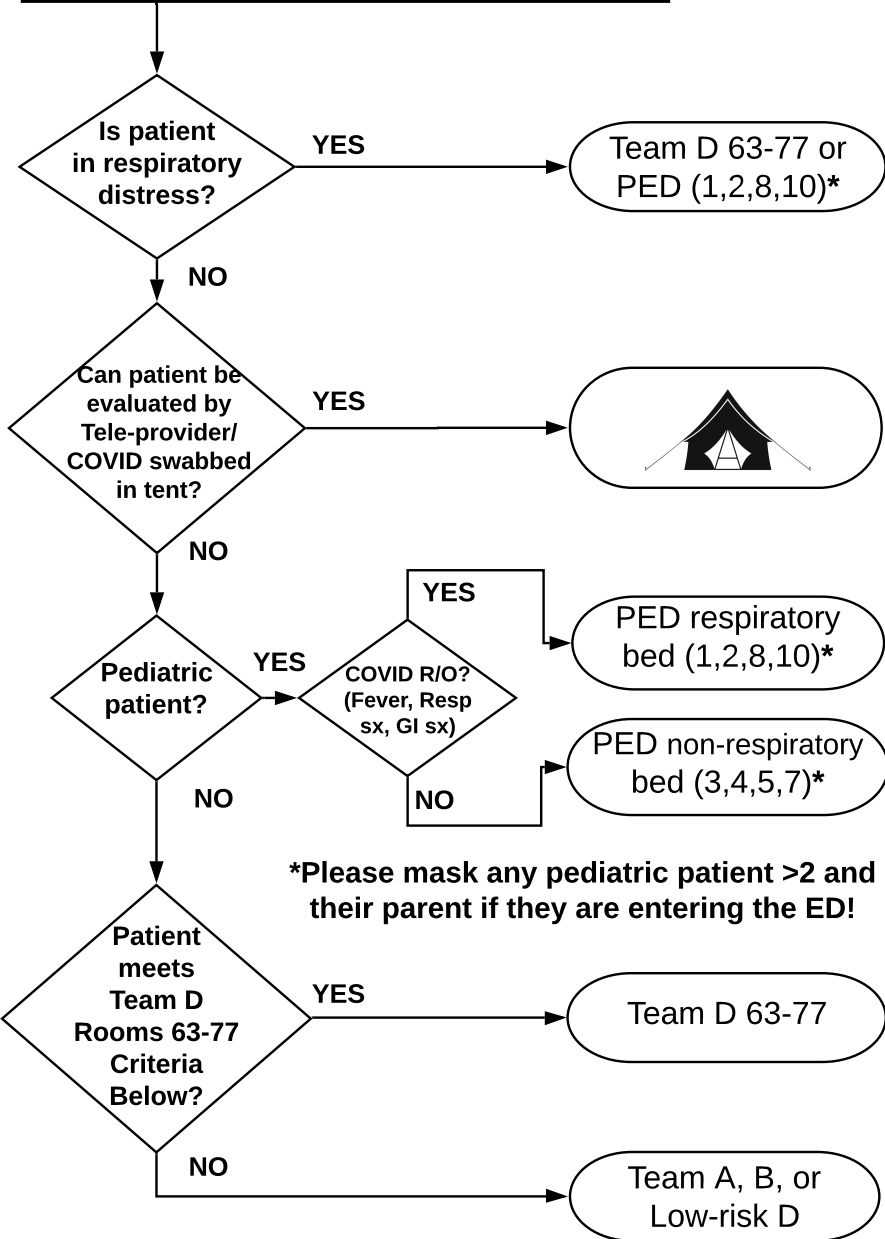
Asymptomatic COVID Tent Swab/Eval
≥ 19 yo Epic Message Adult Providers or call D- Attending (984-215-3928)

≤ 18 yo PED Attending (984-215-5405 or PED Radio)

2:30 PM - 11:30 PM

EMAP Tele-Provider (984-215-3800)

Patient arrives outside of ED and greeted by Triage RN  OR 



WHO GOES TO TEAM D ROOMS 63-77?

If you believe triage sx may be COVID-19 related discuss with Charge RN and A-side Attending for bed placement



Sx or Hx
 (any of the following without a clear source)

- fevers (including subjective)
- muscle aches
- respiratory sx (cough, SOB, difficulty breathing)
- COVID-19 test pending
- known exposure to COVID-19 positive person



Specific pt populations



- SNF (with known outbreak*)
- DOC (with known outbreak*)
- Patients arriving with any other patient triaged to high-risk area

* Known outbreak QR code

